



# Copper Pigtail Adaptor

## Conductor Range: 4/0-600MCM Copper or Aluminum



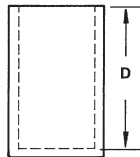
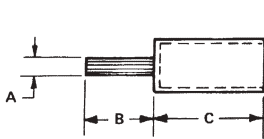
### A TYPE CPM

#### Features

- Barrel manufactured from high strength aluminum alloy
- Pigtail manufactured from high conductivity copper
- Chamfered barrel
- UL Listed and CSA Certified for 600 volts
- Clearly marked with wire size and die index for IlSCO tools, proper number and location of crimps
- Prefilled with DE-OX
- Color coded end caps inserted in barrel
- Supplied with insulating cover
- Rated for full ampacity of incoming conductor

#### Benefits

- Allows insertion into equipment supplied with either copper or aluminum connectors
- Provides maximum conductivity and excellent crimping characteristics
- Provides easy conductor insertion
- Ensures reliability for copper and aluminum conductors
- Provides easy identification and tooling recommendation
- Prevents oxides from forming
- Prevents foreign materials from entering the connector prior to usage and color code identifies the proper compression die.
- Eliminates taping



| Catalog Number | Wire Size | Die Color | Copper Pin Size | Dimensions |       |        |         | O.D.   | I.D.  | Temperature Rating |
|----------------|-----------|-----------|-----------------|------------|-------|--------|---------|--------|-------|--------------------|
|                |           |           |                 | A          | B     | C      | Cover D |        |       |                    |
| CPM-4/0        | 4/0       | White     | 2/0             | 13/32      | 1-3/8 | 1-7/8  | 2-3/32  | 29/32  | 9/16  | 90°                |
| CPM-250        | 250MCM    | Brown     | 3/0             | 15/32      | 1-1/2 | 2-1/16 | 2-27/32 | 1-5/32 | 39/64 | 90°                |
| CPM-300        | 300MCM    | Brown     | 4/0             | 17/32      | 1-5/8 | 2-1/16 | 2-27/32 | 1-5/32 | 21/32 | 90°                |
| CPM-350        | 350MCM    | Brown     | 4/0             | 17/32      | 1-5/8 | 2-1/16 | 2-27/32 | 1-5/32 | 23/32 | 90°                |
| CPM-400        | 400MCM    | Pink      | 250MCM          | 37/64      | 1-7/8 | 2-3/32 | 2-13/32 | 1-3/8  | 49/64 | 90°                |
| CPM-500        | 500MCM    | Pink      | 350MCM          | 11/16      | 1-7/8 | 2-3/32 | 2-13/32 | 1-3/8  | 55/64 | 90°                |
| CPM-600        | 600MCM    | Yellow    | 350MCM          | 11/16      | 1-7/8 | 2-3/4  | 3-3/32  | 1-1/2  | 59/64 | 90°                |

CONTINUED ON NEXT PAGE.

## Tooling Information

| Catalog Number | ILSCO   |                                     |   |                                    | Burdry                             |                                    |                                    |                                    | Thomas & Betts                                |  |   | Color Code |
|----------------|---|-------------------------------------|---|------------------------------------|------------------------------------|------------------------------------|------------------------------------|------------------------------------|---|--|---|------------|
|                | ILC-12<br>ILC-12H<br>Die No.<br>No. of Crimps | ILCB-12<br>Die No.<br>No. of Crimps | ILC-14<br>ILC-14H<br>Die No.<br>No. of Crimps | ILC-15<br>Die No.<br>No. of Crimps | Y-46<br>Die Index<br>No. of Crimps | Y-35<br>Die Index<br>No. of Crimps | Y-39<br>Die Index<br>No. of Crimps | Y-45<br>Die Index<br>No. of Crimps | 13642<br>15 Ton<br>Die Index<br>No. of Crimps | TBM 15<br>15 Ton<br>Die Index<br>No. of Crimps | 21940<br>40 Ton<br>Die Index<br>No. of Crimps |            |
| CPM-4/0        | ILD-12<br>(1)                                 | ILD-12<br>(1)                       | ILD-12<br>(1)                                 | ILD-12<br>(1)                      | 324<br>(2)                         | 324<br>(2)                         | 324<br>(2)                         | 324<br>(2)                         | 76H<br>(4)                                    | 76<br>(2)                                      | 76<br>(2)                                     | White      |
| CPM-250        | ILD-14<br>(2*)                                | ILD-14<br>(2*)                      | ILD-14<br>(2*)                                | ILD-14<br>(2*)                     | 299<br>(2*)                        | 299<br>(2*)                        | 299<br>(2*)                        | 299<br>(2*)                        | 87H<br>(2)                                    | 87H<br>(2)                                     | 87<br>(1)                                     | Brown      |
| CPM-300        | ILD-14<br>(2*)                                | ILD-14<br>(2*)                      | ILD-14<br>(2*)                                | ILD-14<br>(2*)                     | 299<br>(2*)                        | 299<br>(2*)                        | 299<br>(2*)                        | 299<br>(2*)                        | 87H<br>(2)                                    | 87H<br>(2)                                     | 87<br>(1)                                     | Brown      |
| CPM-350        | ILD-14<br>(2*)                                | ILD-14<br>(2*)                      | ILD-14<br>(2*)                                | ILD-14<br>(2*)                     | 299<br>(2*)                        | 299<br>(2*)                        | 299<br>(2*)                        | 299<br>(2*)                        | 87H<br>(2)                                    | 87H<br>(2)                                     | 87<br>(1)                                     | Brown      |
| CPM-400        | ILD-16A<br>(2*)                               | ILD-16A<br>(2*)                     | ILD-16A<br>(2*)                               | ILD-16A<br>(2*)                    | 300<br>(3)                         | 300<br>(3)                         | 300<br>(3)                         | 300<br>(3)                         | 106H<br>(2)                                   | 106<br>(1)                                     | 106<br>(1)                                    | Pink       |
| CPM-500        | ILD-16A<br>(2*)                               | ILD-16A<br>(2*)                     | ILD-16A<br>(2*)                               | ILD-16A<br>(2*)                    | 300<br>(3)                         | 300<br>(3)                         | 300<br>(3)                         | 300<br>(3)                         | 106H<br>(2)                                   | 106<br>(1)                                     | 106<br>(1)                                    | Pink       |
| CPM-600        | ILD-18<br>(3)                                 | ILD-18<br>(3)                       | ILD-18<br>(3)                                 | ILD-18<br>(3)                      | 936<br>(3)                         | 936<br>(3)                         | 936<br>(3)                         | 936<br>(3)                         | 115H<br>(3)                                   | 115H<br>(3)                                    | 115<br>(2)                                    | Yellow     |

\*Overlap Compressions

Dieless crimp tools must not be used to crimp CPM/CPML adaptors.