



Aluminum Compression Lugs

Conductor Range: 1/0-300MCM



A

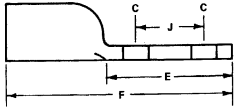
TYPE 2ACL

Features

- Electro-tin plated
- Manufactured from high strength aluminum alloy
- Chamfered barrel
- UL 486B 90° C Listed and CSA Certified for 600 volts
- Color coded
- Clearly marked with wire size and die index for IlSCO tools, proper number and location of crimps
- Prefilled with DE-OX
- Color coded end caps inserted in barrel

Benefits

- Provides low contact resistance
- Provides maximum conductivity and excellent crimping characteristics
- Provides easy conductor insertion
- Ensures reliability for copper or aluminum conductors
- Provides visual tooling recommendation for IlSCO or standard industry tools
- Provides easy identification and tooling recommendation
- Prevents oxides from forming
- Prevents foreign materials from entering the connector prior to usage and color code identifies the proper compression die



UL Listed and CSA Certified Range-Taking When Installed with IDT-12 Tool

Catalog No.	Wire Size	Wire Range When Installed With IDT-12 Tool	Die Color Code	Bolt Size	Tang Width	Dimensions				Die Index	O.D.	I.D.	Temperature Rating
						C	E	F	J				
2ACL-1/0	1/0	1/0-1	Tan	3/8 (2)	7/8	13/32(2)	1-7/8	3-15/32	1	8	39/64	25/64	90°
2ACN-1/0	1/0	1/0-1	Tan	1/2 (2)	7/8	17/32(2)	3	4-5/8	1-3/4	8	39/64	25/64	90°
2ACL-2/0	2/0	2/0-1	Olive	1/2 (2)	31/32	9/16(2)	3-3/8	5	1-3/4	10	43/64	7/16	90°
2ACL-3/0	3/0	3/0-1	Ruby	1/2 (2)	1-1/16	9/16(2)	3-3/8	5-5/32	1-3/4	10	49/64	1/2	90°
2ACL-4/0	4/0	4/0-1	White	1/2 (2)	1-1/8	9/16(2)	3-3/8	5-5/8	1-3/4	12	55/64	9/16	90°
2ACL-250	250MCM	250MCM-1/0	Red	1/2 (2)	1-21/64	9/16(2)	3-3/8	5-3/4	1-3/4	13	59/64	39/64	90°
2ACL-300	300MCM	300MCM-2/0	Blue	1/2 (2)	1-7/16	9/16(2)	3-3/8	5-15/16	1-3/4	14	1-1/64	21/32	90°

CONTINUED ON NEXT PAGE.

Tooling Information

Catalog Number	ILSCO								Burdny						Thomas & Betts			Anderson		Color Code	
	ILC-12 Die No.	ILCB-12 Die No.	ILC-14 Die No.	IDTB-12 Die No.	ILC-15 Die No.	MT-25 Hand Tool No. of Crimps	94285 Left / Rt. Die / Die No. of Crimps	IDT-12 Dieless No. of Crimps	Y-48B Die Index No. of Crimps	Y-35 Die Index No. of Crimps	Y-39 Die Index No. of Crimps	Y-45 Die Index No. of Crimps	Y-46 Die Index No. of Crimps	MY29-3 Hand Tool No. of Crimps	Y644M Dieless No. of Crimps	13642 15 Ton Die Index No. of Crimps	TBM 15 15 Ton Die Index No. of Crimps	21940 40 Ton Die Index No. of Crimps	TBM-8 Hand Tool No. of Crimps		Versa Crimp Die Index No. of Crimps
2ACL-1/0	ILD-8 (1)	ILD-8 (1)	ILD-8 (1)	(2)	ILD-8 (1)	(2)	A/C (5)	(1)	296 (1)	296 (1)	296 (1)	296 (1)	296 (1)	(2)	(1)	50 (3)	50 (3)	50 (3)	(3)	(2)	Tan
2ACL-2/0	ILD-10 (1)	ILD-10 (1)	ILD-10 (1)	(2)	ILD-10 (1)	(2)	A/B (4)	(1)	297 (1)	297 (2)	297 (2)	297 (2)	297 (2)	(2)	(1)	54 (3)	54H (5)	54 (3)	(3)	(2)	Olive
2ACL-3/0	ILD-10 (2)	ILD-10 (2)	ILD-10 (2)	(3)	ILD-10 (2)	(2)	A/A (4)	(1)	467 (1)	467 (2)	467 (2)	467 (2)	467 (2)	(2)	(1)	60 (3)	60 (3)	60 (3)	(3)	(2)	Ruby
2ACL-4/0	ILD-12 (1)	ILD-12 (1)	ILD-12 (1)	(3)	ILD-12 (1)	(2)	-	(1)	298 (1)	298 (2)	298 (2)	298 (2)	298 (2)	(2)	(1)	66H (4)	66 (2)	66 (2)	(5)	(3)	White
2ACL-250	ILD-13 (2)	ILD-13 (2)	ILD-13 (2)	(3)	ILD-13 (2)	-	-	(1)	324 (1)	324 (2)	324 (2)	324 (2)	324 (2)	-	(1)	71H (4)	71H (4)	71 (2)	(5)	(3)	Red
2ACL-300	ILD-14 (2)	ILD-14 (2)	ILD-14 (2)	(4)	ILD-14 (2)	-	-	(1)	470 (1)	470 (2)	470 (2)	470 (2)	470 (2)	-	(1)	76H (4)	76 (2)	76 (2)	(5)	(3)	Blue

UL Listed and CSA Certified 600 volts maximum when installed with tools and dies shown above. If proper high voltage spacings and insulation techniques are used, the aluminum compression connectors can be used for high voltage applications up to 35KV.