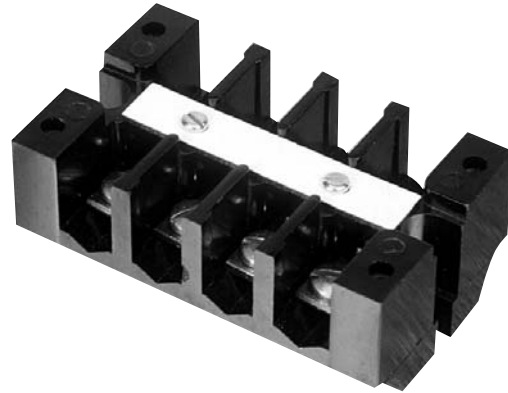


Phenolic One Piece

Traditional standard in the heavy industrial, rail transport, utility and traffic control industries. The rugged, one-piece construction finds wide application in dirty and fibration-prone environments.

- Two, four, six, eight and twelve circuit models
- Strap screw contacts accept wire 8 AWG and smaller and are rated to 50 Amps
- Dovetail base mounts on standard size channel
- Pilot point screws with strap screw contacts speed installation time
- Easily identifiable circuits with use of plain white marking strip
- No assembly required - each block is a single, easily installed unit



Specifications

Center-to-Center Spacing: .63 in. CL

Voltage Rating: Blocks meet 600V creepage and clearance requirements of NEMA, UL and CSA for general industrial control equipment and panelboards. Withstand voltages greatly in excess of IEEE switchgear standards for 750V.

Ampacity: For a single 8 AWG wire, the maximum amperage recommended is 50A.

Catalog Number	B102	B104	B106	B108	B112
Mounting Style	Two-Way Mounting Base	Two-Way Mounting Base	Two-Way Mounting Base	Two-Way Mounting Base	Two-Way Mounting Base
Number of Circuits	2	4	6	8	12
Ampacity	50A	50A	50A	50A	50A
Contact Type	Strap Screw (Steel)	Strap Screw (Steel)	Strap Screw (Steel)	Strap Screw (Steel)	Strap Screw (Steel)
Screw Type	10-32 Binding Head	10-32 Binding Head	10-32 Binding Head	10-32 Binding Head	10-32 Binding Head
Wire Range (AWG)	#18 to #8	#18 to #8	#18 to #8	#18 to #8	#18 to #8

Housing Material	Phenolic, Filled, Flame retardant
Contact Material	Copper / Copper Alloy
Screw Material	Steel Plated
Maximum Service Temperature	150°C (302°F)
Dielectric Strength (RH40% at sea level)	300V/mil thickness (per ASTM D149)
UL High Voltage Arc Testing (in./min.)	.49 - .58
Water Absorption (24 hrs. % weight gain)	0.45% (per ASTM D570)
Flammability	94V-1 (per UL94)
Chemical Resistance	Resistance to acids, alkalies and aliphatic hydrocarbons and ketones (per ASTM D543)
Radiation Resistance (ergs g⁻¹ C)	2.7 x 10 ⁷ min.

WIRE RANGE: Solid or Stranded
Strap Screw
1 #18 AWG through 1 #8 AWG

Dimensions

No. of Circuits	C	L
2	1.63	2.0
4	2.88	3.25
6	4.13	4.50
8	5.38	5.75
12	7.88	8.25

