

CAT.#	APPROVALS
JOB	TYPE

### SPECIFICATIONS

#### Applications -

The Hubbell Industrial UTB is a versatile LED highbay designed to light gyms, industrial, multi-purpose rooms in schools and churches and retail. Its simple, straightforward design is meant to provide high quality light economically. It is available in a 28,000 lumen version and a 18,000 lumen version. We also offer five different reflector options, all 16" in diameter at the bottom. We have a clear acrylic, translucent white, opalescent acrylic and suspended bead. We also offer a 16" spun aluminum reflector. The basic fixture is offered in 4000°K and 5000°K color temperatures. There are three lens options and several other mounting accessories including cord and plug options and bottom wire guards.

#### Construction -

- Housing: Die Cast Aluminum
- LEDs: 40 High efficiency LEDs / 24 High efficiency LEDs
- Installation: Pendant mount from 3/4" threaded conduit or fixture hook
- Symmetrical for easy one-for-one replacement of existing highbays
- Weight: 15 lbs.

#### Performance -

- Lumens: 18000, 28000
- LPW (lumens/watt): up to 112 LPW

#### Shielding (Five Reflector Options) -

- Clear acrylic
- Translucent White
- Opalescent Acrylic
- Suspended Bead
- Anodized Aluminum

#### Electrical -

- Total input wattage of 255W/167W
- Replacement for 400W/250W HID Highbay
- Universal voltage of 120VAC - 277VAC
- 480VAC/347VAC

#### Warranty -

- Five years warranty (Terms and Conditions apply)

#### Certifications -

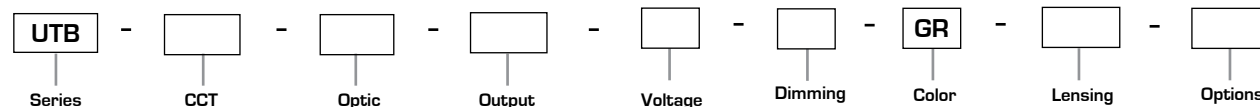
- All luminaires are built to UL1598 and 2108 standards, and bear appropriate CSA labels.
- CSA Certified to meet U.S. and Canadian standards. DesignLights Consortium® (DLC) qualified product. Not all versions of this product may be DLC qualified. Please check the DLC Qualified Products List at [www.designlights.org/GPL](http://www.designlights.org/GPL) to confirm which versions are qualified.

UTB  
UTILIBAY™



### ORDERING INFORMATION

ORDERING EXAMPLE: UTB-4K-WW16-HO-ND-GR-DLR-F(X)



SERIES	OUTPUT	DIMMING	OPTIONS
UTB LED Highbay	MO Med Output (18,000 lumens) HO High Output (28,000 lumens)	ND Non-Dimming CD Continuous Dimming	C(y)HLP(x) Cord, Hook, Loop & Plug (15A) F(x) Fusing SCO Occupancy Sensor 100% to 0%
CCT	VOLTAGE	COLOR	<b>Notes:</b> Replace (X) with the voltage, 1=120V, 2=208V, 3=240V and 4=277V. 4Replace (y) with the length, 4=4ft, 6=6ft, 8=8ft., 10=10ft., 12=12ft Fusing not available on 347V or 480V
4K 4000K, 80 CRI 5K 5000K, 80 CRI	U Universal 1 120V 2 208V 3 240V 4 277V 5 480V F 347V	GR Grey	
OPTIC	LENSING		<b>ACCESSORIES</b> WG-16 16" Wire Guard UTB-TLR Luminaire Retainer
WA16 Clear Acrylic 16" WW16 Translucent White 16" OP16 Opalescent Acrylic 16" SB16 Suspended Bead 16" AL16 Anodized Aluminum 16"	N None CDL Conical Drop Lens DLR Dropped Lens Refractor P95 Frosted Acrylic Lens		

### ELECTRICAL DATA

OUTPUT VERSION	AMP DRAW						POWER FACTOR [@277V]	THD [@120V]	AMBIENT TEMP RANGE	DIMMING RANGE	L70 LUMEN MAINTENANCE	WARRANTY
	120V	208V	240V	277V	347V	480V						
High Output ("HO")	2.16	1.24	1.08	0.95	0.74	0.54	≥ 0.90	≤ 0.10	-40°C to 40°C -40°C to 50°C	100% to 10%	Reported >36,000 hrs Calculated = 120,000	5 years
Medium Output ("MO")	1.40	0.81	0.71	0.63	0.48	0.36						

**PHOTOMETRIC DATA: UTB-4K-WA16-HO-U-ND-GR-N**

**LUMINAIRE DATA**

**UTB-4K-WA16-HO-U-ND-GR-N**

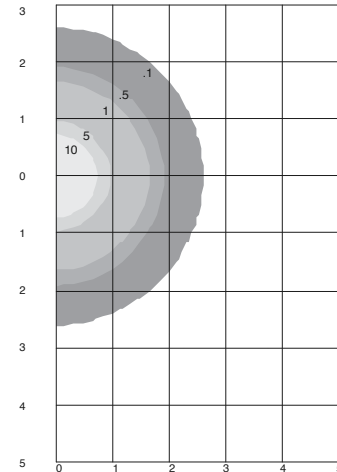
Circular Up/Down Luminaire with Clear Acrylic Prismatic Refractor

**DRIVER HLG-240H-48B**

Lamp	LED
Lumens	27,094
Watts	253.5
Efficacy	107
Mounting	Pendant
Spacing Criterion (0-180)	1.20

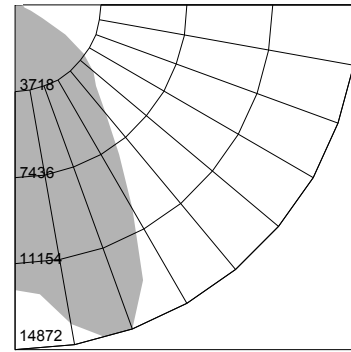
ZONE	LUMENS	% FIXT.
0-30	11270	41.6
0-40	16262	60.0
0-60	25375	86.4
0-90	25729	95.0
90-120	805	3.0
90-130	979	3.6
90-150	1236	4.6
90-180	1365	5.0
0-180	27094	100.0

**ISOMETRIC FOOT CANDLES**



Distance In Units Of Mounting Height  
Values Based On 20 Foot Mounting Height

**POLAR GRAPH**



**PHOTOMETRIC DATA: UTB-4K-WA16-HO-U-ND-GR-P95**

**LUMINAIRE DATA**

**UTB-4K-WA16-HO-U-ND-GR-P95**

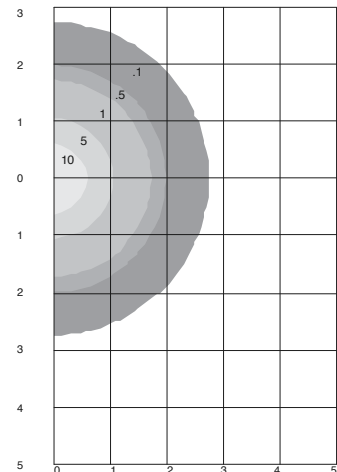
Circular Up/Down Luminaire with Clear Acrylic Prismatic Refractor

**DRIVER HLG-240H-48B**

Lamp	LED
Lumens	25,349
Watts	253.5
Efficacy	100
Mounting	Pendant
Spacing Criterion (0-180)	0.96

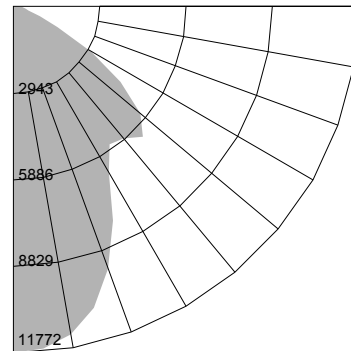
ZONE	LUMENS	% FIXT.
0-30	7734	30.5
0-40	11470	45.2
0-60	20053	79.1
0-90	22921	90.4
90-120	1150	4.5
90-130	1552	6.1
90-150	2181	8.6
90-180	2428	9.6
0-180	25349	100.

**ISOMETRIC FOOT CANDLES**



Distance In Units Of Mounting Height  
Values Based On 20 Foot Mounting Height

**POLAR GRAPH**



**PHOTOMETRIC DATA: UTB-4K-OP16-HO-U-ND-GR-N**

**LUMINAIRE DATA**

**UTB-4K-OP16-HO-U-ND-GR-N**

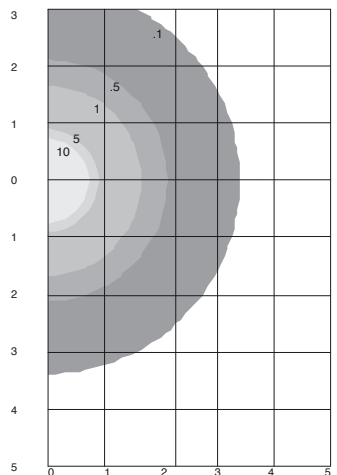
Circular Up/Down Luminaire with Opalescent Acrylic Refractor

**DRIVER HLG-240H-48B**

Lamp	LED
Lumens	27,384
Watts	254.2
Efficacy	108
Mounting	Pendant
Spacing Criterion (0-180)	1.20

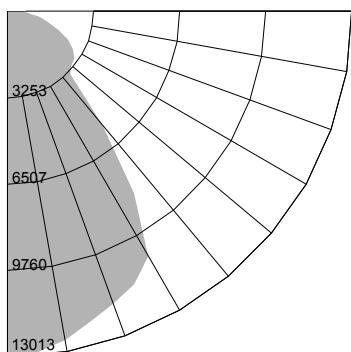
ZONE	LUMENS	% FIXT.
0-30	9858	36.0
0-40	14994	54.8
0-60	20709	75.6
0-90	25909	94.6
90-120	1024	3.7
90-130	1174	4.3
90-150	1372	5.0
90-180	1475	5.4
0-180	27384	100.0

**ISOMETRIC FOOT CANDLES**



Distance In Units Of Mounting Height  
Values Based On 20 Foot Mounting Height

**POLAR GRAPH**



PHOTOMETRIC DATA: UTB-5K-WA16-HO-U-ND-GR-N

LUMINAIRE DATA

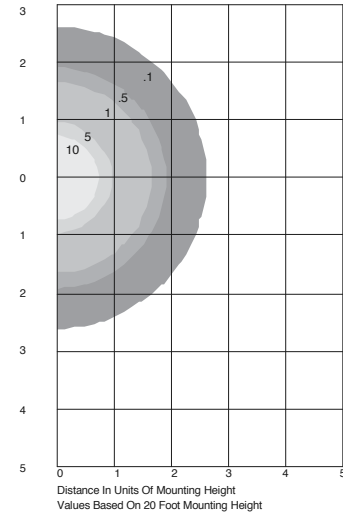
UTB-5K-WA16-HO-U-ND-GR-N  
Circular Up/Down Luminaire with Clear Acrylic  
Prismatic Refractor

DRIVER HLG-240H-48B

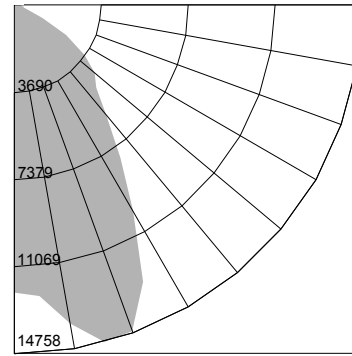
Lamp	LED
Lumens	26,985
Watts	252.6
Efficacy	107
Mounting	Pendant
Spacing Criterion (0-180)	1.20

ZONE	LUMENS	% FIXT.
0-30	11141	41.3
0-40	16116	59.7
0-60	23259	86.2
0-90	25619	94.9
90-120	808	3.0
90-130	982	3.6
90-150	1237	4.6
90-180	1365	5.1
0-180	26985	100.0

ISOMETRIC FOOT CANDLES



POLAR GRAPH



DIMENSIONS

