

NEXTSPEED® Ascent Category 6A solution is a tuned system of structured cabling components designed and balanced to work together to support bandwidth beyond 625MHz. NEXTSPEED® Ascent provides the highest level of reliability with a zero bit error rate of 10⁻¹³.

NEXTSPEED® Ascent Category 6A Jacks

Unit of Measure	Catalog No.
1 per bag	HJ6Axx
25 per bag	HJ6Axx25

xx = Color: **AL** (Almond), **B** (Blue), **BK** (Black), **BN** (Brown), **EI** (Electric Ivory), **GL** (Gold), **GN** (Green), **GY** (Gray), **LA** (Light Almond), **OW** (Office White), **OR** (Orange), **P** (Purple), **R** (Red), **W** (White), and **Y** (Yellow). Light Almond is the same color as Office White. See color chart on page V30.



NEXTSPEED® Ascent Category 6A, Component Patch Panels

Format	Width (mm)	Color	Catalog No.
Standard	19" (483)	Black	HP6AxxU
Standard	19" (483)	Silver	HP6AxxUS
Angled	19" (483)	Black	HP6AxxAU

xx = Port Size: **24** (24 ports); **48** (48 ports). See page E4 for additional sizes and catalog numbers.



NEXTSPEED® Ascent Category 6A, Patch Cords

Unit of Measure	Catalog No.
1 patch cord	HC6Axxyy

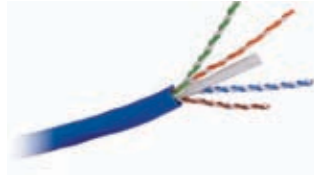
xx = Color: **B** (Blue), **BK** (Black), **BN** (Brown), **GN** (Green), **GY** (Gray), **OR** (Orange), **P** (Purple), **PK** (Pink), **R** (Red), **W** (White), and **Y** (Yellow). See color chart on page V30.
 yy = Standard Length: **01** (1'), **03** (3'), **05** (5'), **07** (7'), **10** (10'), **15** (15'), **20** (20').
 Made-to-order lengths are available from 25ft to 100ft in 5ft increments.



NEXTSPEED® Ascent Category 6A Cable

Color	Plenum Spool	Riser Spool
Blue	C6ASPB	C6ASRB
Gray	C6ASPGY	C6ASRGY
White	C6ASPW	C6ASRW
Yellow	C6ASPY	C6ASRY

Note: All category rated cable is packaged in 1000 foot quantities. See Section F for additional cable requirements.



NEXTSPEED® Ascent Category 6A, Trunk Cable Assemblies

BIDnet Pre-Terminated Copper Trunk Assemblies are the ideal solution for data centers, open office and other applications where accuracy, reliability and performance are the most important factors.

- Simplifies installation time by 75%
- Reduces initial installation cost by 30%
- 100% factory tested and assembled
- Mission Critical 25-Year Warranty

Note: Contact your local distributor or Hubbell's customer service for additional information on BIDnet Pre-Terminated Copper Trunk Assemblies.



NEXTSPEED® 10 GbE, Field Termination Kits

Description	Catalog No.
64-pair kit with legs and 16 connecting blocks*	6110FTK64WL
64-pair kit w/o legs and 16 connecting blocks*	6110FTK64NL
192-pair kit with legs and 64 connecting blocks*	6110FTK192WL

Note: *6-110, 4-pair connecting blocks. See page E14 for more information.





Performance

Ascent sled technology improves crosstalk providing increased performance.



Strain Relief

Plug and boot constructed from clear polycarbonate.



Snagless Design

Easy to route and cable manage without latch getting caught.



Technology

Double jacket increases intra-cable separation.

HUBBELL
Advantage

- Third Party Verified Category 6A Component Exceeds TIA Limits
- Plug Optimized for High Density Switch Port Count
- 10-Gigabit Application Assurance
- PoE+ Ready

Specifications

- Cable construction:
 - Conductor: 26AWG
 - Jacket: flame-retardant PVC – CM rated

Standards/Listings/Verifications

- TIA-568-C.2 Category 6A component
- UL Listed 1863



NEXTSPEED® Ascent Category 6A Patch Cords

Length	Catalog No.	Length	Catalog No.
1'	HC6Axx01	10'	HC6Axx10
3'	HC6Axx03	15'	HC6Axx15
5'	HC6Axx05	20'	HC6Axx20
7'	HC6Axx07		

xx = Color: **B** (Blue), **BK** (Black), **GN** (Green), **GY** (Gray), **OR** (Orange), **P** (Purple), **R** (Red), **W** (White) and **Y** (Yellow). See color chart on page V30.

Made-to-order lengths are available from 25ft to 100ft in 5ft increments.



HC6AB20