

METAL FLAT COVERS



MX2050S



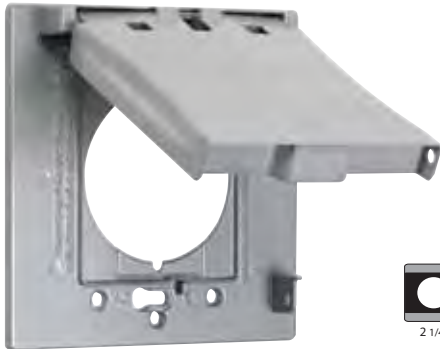
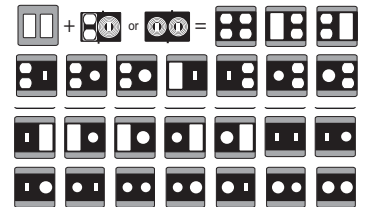
MX2050Z



MX2050WH

25ⁱⁿ1

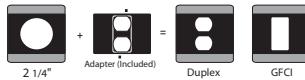
CONFIGURATIONS



MX2150S

3ⁱⁿ1

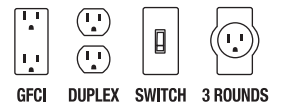
CONFIGURATIONS



MX3050S

125ⁱⁿ1

CONFIGURATIONS



DUPLEX COVERS

- Superior Commercial Quality Die Cast Metal Construction
- Premium Powdercoat Finish
- Includes Gasket, Mounting Hardware and Installation instructions
- Lockable Tabs
- **UL** LISTED & 2011 NEC® Compliant
- **NEMA** 3R Compliant



CH100S



CH100Z



CH100WH

TAYMAC ITEM #	UPC NUMBER	DESCRIPTION	COLOR	SHELF PACK	SHELF PACK WEIGHT (LBS)
Multi-Gang MX Series Covers					
MX2050S	0-92326-11071-6	2-Device 25-in-1	Gray	8	3.95
MX2050Z	0-92326-11280-2	2-Device 25-in-1	Bronze	4	1.9
MX2050WH	0-92326-11281-9	2-Device 25-in-1	White	4	1.9
MX2150S	0-92326-11072-3	1-Device 3-in-1	Gray	6	3.25
MX3050S	0-92326-11261-1	3-Device 125-in-1	Gray	5	5.68
Duplex Receptacle Covers					
CH100S	0-92326-11119-5	Horizontal, Lockable	Gray	20	4.70
CH100Z	0-92326-11276-5	Horizontal, Lockable	Bronze	20	4.70
CH100WH	0-92326-11277-2	Horizontal, Lockable	White	20	4.70