

**SC SERIES ENCLOSURES
NEMA 1 SCREW COVER WALL-MOUNT**



SC060604
with SCF cover



SC080806G



SC080806NK

Industry Standards

- UL 50, Type 1
- CSA Certified, Type 1 (See Note)
- NEMA/EEMAC Type 1

UL Files E23553

CSA File LL66078

FEATURES-SPECIFICATIONS

Applications

Designed for use as a junction box and pull box in commercial and general industrial applications. Flush covers must be ordered separately for flush mount applications.

Construction

- Fabricated from 16, 14 and 12 gauge steel or G-90 pre-galvanized steel (reference table)
- Flat, removable covers fastened with plated steel screws

- Cover design permits easy removal without extracting cover screws
- Mounting holes on back of box
- Available with or without knockouts. Removable concentric knockouts on all four sides of standard enclosures with knockouts

Finish

- ANSI-61 gray polyester powder inside and out
- Unpainted pre-galvanized steel

Accessories

- See pages J1-J22

Optional Flush Covers

Designed to mount on enclosure for flush installations. 16 or 14 gauge steel (reference table).

- ANSI 61 gray polyester powder finish.
- Unpainted pre-galvanized steel

SC SERIES SCREW COVER PULL BOX ENCLOSURES								
CATALOG NUMBER				BODY/DOOR STEEL GAUGE	COVERS ONLY See Page A5	ENCLOSURE SIZE H+1/8", W+1/8", D+3/16"	KNOCKOUT PATTERN	
PAINTED		GALVANIZED					WIDTH SIDE	HEIGHT SIDE
W/KNOCKOUTS	W/O KNOCKOUTS	W/KNOCKOUTS	W/O KNOCKOUTS					
SC040404*	SC040404NK*	SC040404G*	SC040404GNK*	16/16	Yes	4.00x4.00x4.00 (102x102x102)	A	A
SC040604*	SC040604NK*	SC040604G*	SC040604GNK*	16/16	Yes	6.00x4.00x4.00 (152x102x102)	A	A-B-A
SC060604	SC060604NK	SC060604G	SC060604GNK	16/16	Yes	6.00x6.00x4.00 (152x152x102)	A-B-A	A-B-A
SC060804	SC060804NK	SC060804G	SC060804GNK	16/16	Yes	8.00x6.00x4.00 (203x152x102)	A-B-A	A-B-A
SC061204	SC061204NK	SC061204G	SC061204GNK	16/16	Yes	12.00x6.00x4.00 (305x152x102)	A-B-A	B-A-F-F-A-B
SC080804	SC080804NK	SC080804G	SC080804GNK	16/16	Yes	8.00x8.00x4.00 (203x203x102)	A-B-A	A-B-A
SC081004	SC081004NK	SC081004G	SC081004GNK	16/16	Yes	10.00x8.00x4.00 (254x203x102)	A-B-A	B-A-F-F-A
SC081204	SC081204NK	SC081204G	SC081204GNK	16/16	Yes	12.00x8.00x4.00 (305x203x102)	A-B-A	B-A-F-F-A-B
SC101004	SC101004NK	SC101004G	SC101004GNK	16/16	Yes	10.00x10.00x4.00 (254x254x102)	B-A-F-F-A	B-A-F-F-A
SC101204	SC101204NK	SC101204G	SC101204GNK	16/16	Yes	12.00x10.00x4.00 (305x254x102)	B-A-F-F-A	B-A-F-F-A-B
SC121204	SC121204NK	SC121204G	SC121204GNK	16/16	Yes	12.00x12.00x4.00 (305x305x102)	B-A-F-F-A-B	B-A-F-F-A-B
SC121504	SC121504NK	SC121504G	SC121504GNK	16/16	Yes	15.00x12.00x4.00 (381x305x102)	B-A-F-F-A-B	A-B-A-F-F-A-B-A

*Not UL Listed.

Continued on page A3

SC SERIES ENCLOSURES NEMA 1 SCREW COVER WALL-MOUNT

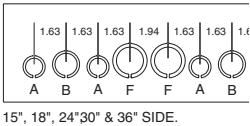
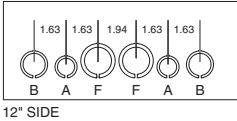
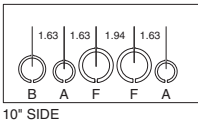
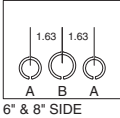
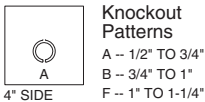
A5

SC SERIES SCREW COVER PULL BOX ENCLOSURES (CONT.)								
CATALOG NUMBER				BODY/DOOR STEEL GAUGE	COVERS ONLY See Chart Below	ENCLOSURE SIZE H+ $\frac{1}{8}$ ", W+ $\frac{1}{8}$ ", D+ $\frac{3}{16}$ "	KNOCKOUT PATTERN	
PAINTED		GALVANIZED					WIDTH SIDE	HEIGHT SIDE
W/KNOCKOUTS	W/O KNOCKOUTS	W/KNOCKOUTS	W/O KNOCKOUTS					
+ SC122412	+ SC122412NK	+ SC122412G	+ SC122412GNK	16/16	Yes	24.00x12.00x12.00 (610x305x305)	B-A-F-F-A-B	A-B-A-F-F-A-B-A
+ SC181812	+ SC181812NK	+ SC181812G	+ SC181812GNK	16/16	Yes	18.00x18.00x12.00 (457x457x305)	A-B-A-F-F-A-B-A	A-B-A-F-F-A-B-A
+ SC182412	+ SC182412NK	+ SC182412G	+ SC182412GNK	16/16	Yes	24.00x18.00x12.00 (610x457x305)	A-B-A-F-F-A-B-A	A-B-A-F-F-A-B-A
+ SC242412	+ SC242412NK	+ SC242412G	+ SC242412GNK	14/14	Yes	24.00x24.00x12.00 (610x610x305)	A-B-A-F-F-A-B-A	A-B-A-F-F-A-B-A
+ SC243012	+ SC243012NK	+ SC243012G	+ SC243012GNK	14/14	No	30.00x24.00x12.00 (762x610x305)	A-B-A-F-F-A-B-A	A-B-A-F-F-A-B-A
+ SC243612	+ SC243612NK	+ SC243612G	+ SC243612GNK	14/14	No	36.00x24.00x12.00 (914x610x305)	A-B-A-F-F-A-B-A	A-B-A-F-F-A-B-A
—	+ SC303012NK	—	+ SC303012GNK	12/12	No	30.00x30.00x12.00 (762x762x305)	A-B-A-F-F-A-B-A	A-B-A-F-F-A-B-A
—	+ SC303612NK	—	+ SC303612GNK	12/12	No	36.00x30.00x12.00 (914x762x305)	A-B-A-F-F-A-B-A	A-B-A-F-F-A-B-A
—	+ SC363612NK	—	+ SC363612GNK	12/12	No	36.00x36.00x12.00 (914x914x305)	A-B-A-F-F-A-B-A	A-B-A-F-F-A-B-A

(+) All products, unless otherwise denoted by a (+), are: H+1/8", W+1/8", D+3/16"

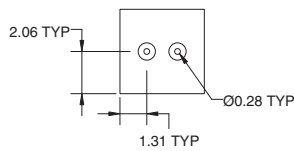
Note: Must specify CSA Label when ordering. Consult factory for dimensions and drawings on 8", 10" and 12" deep enclosures.

Note: 8", 10" and 12" deep enclosures do not have mounting embosses in back of enclosure, only mounting holes.

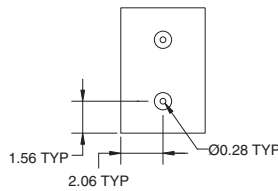


SURFACE & FLUSH COVERS ONLY				FLUSH COVER SIZE A X B	FOR BOX SIZE H X W**
SURFACE PNTD.	SURFACE GALV.	FLUSH PAINTED	FLUSH GALV.		
SC0404	SC0404G	SCF0404	SCF0404G	6.00x6.00 (152x152)	4.00x4.00 (102x102)
SC0406	SC0406G	SCF0406	SCF0406G	8.00x6.00 (203x152)	6.00x4.00 (102x102)
SC0606	SC0606G	SCF0606	SCG0606G	8.00x8.00 (203x203)	6.00x6.00 (152x152)
SC0608	SC0608G	SCF0608	SCF0608G	10.00x8.00 (254x203)	8.00x6.00 (203x152)
SC0612	SC0612G	SCF0612	SCF0612G	14.00x8.00 (356x203)	12.00x6.00 (305x152)
SC0808	SC0808G	SCF0808	SCF0808G	10.00x10.00 (254x254)	8.00x8.00 (203x203)
SC0810	SC0810G	SCF0810	SCF0810G	12.00x10.00 (305x254)	10.00x8.00 (254x203)
SC0812	SC0812G	SCF0812	SCF0812G	14.00x10.00 (356x254)	12.00x8.00 (305x203)
SC1010	SC1010G	SCF1010	SCF1010G	12.00x12.00 (305x305)	10.00x10.00 (254x254)
SC1012	SC1012G	SCF1012	SCF1012G	14.00x12.00 (356x305)	12.00x10.00 (305x254)
SC1212	SC1212G	SCF1212	SCF1212G	14.00x14.00 (356x356)	12.00x12.00 (305x305)
SC1215	SC1215G	SCF1215	SCF1215G	17.00x14.00 (432x356)	15.00x12.00 (381x305)
SC1216	SC1216G	SCF1216	SCF1216G	18.00x14.00 (457x356)	16.00x12.00 (406x305)
SC1218	SC1218G	SCF1218	SCF1218G	20.00x14.00 (508x356)	18.00x12.00 (457x305)
SC1224	SC1224G	SCF1224	SCF1224G	26.00x14.00 (660x356)	24.00x12.00 (610x305)
SC1515	SC1515G	SCF1515	SCF1515G	17.00x17.00 (432x432)	15.00x15.00 (381x381)
SC1518	SC1518G	SCF1518	SCF1518G	20.00x17.00 (508x432)	18.00x15.00 (457x381)
SC1616	SC1616G	SCF1616	SCF1616G	18.00x18.00 (457x457)	16.00x16.00 (406x406)
SC1818	SC1818G	SCF1818	SCF1818G	20.00x20.00 (508x508)	18.00x18.00 (457x457)
SC1824	SC1824G	SCF1824	SCF1824G	26.00x20.00 (660x508)	24.00x18.00 (610x457)
SC1830	SC1830G	SCF1830	SCF1830G	32.00x20.00 (813x508)	30.00x18.00 (762x457)
SC2424	SC2424G	SCF2424	SCF2424G	26.00x26.00 (660x660)	24.00x24.00 (610x610)

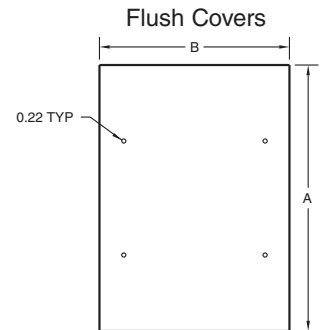
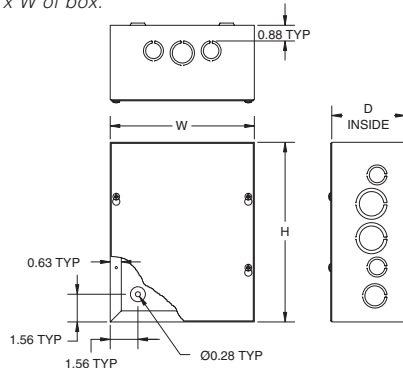
**Surface covers are same size as H x W of box.



4.00" X 4.00" MOUNTING



4.00" X 6.00" MOUNTING



PART NUMBER	PAGE	PART NUMBER	PAGE	PART NUMBER	PAGE	PART NUMBER	PAGE
SC151804GNK	A2	SC182412G	A2	SC243608G	A2	SCF1212	A2-A5
SC151804NK	A2	SC182412GNK	A2	SC243608GNK	A2	SCF1212G	A2-A5
SC151806	A2	SC182412NK	A2	SC243608NK	A2	SCF1215	A2-A5
SC151806G	A2	SC1824G	A5	SC243610	A2	SCF1215G	A2-A5
SC151806GNK	A2	SC1830	A5	SC243610G	A2	SCF1216	A2-A5
SC151806NK	A2	SC183004	A2	SC243610GNK	A2	SCF1216G	A2-A5
SC1518G	A5	SC183004G	A2	SC243610NK	A2	SCF1218	A2-A5
SC1616	A5	SC183004GNK	A2	SC243612	A2	SCF1218G	A2-A5
SC1616G	A5	SC183004NK	A2	SC243612G	A2	SCF1224	A2-A5
SC1818	A5	SC1830G	A5	SC243612GNK	A2	SCF1224G	A2-A5
SC181804	A2	SC2424	A5	SC243612NK	A2	SCF1515	A2-A5
SC181804G	A2	SC242404	A2	SC303008GNK	A2	SCF1515G	A2-A5
SC181804GNK	A2	SC242404G	A2	SC303008NK	A2	SCF1518	A2-A5
SC181804NK	A2	SC242404GNK	A2	SC303010GNK	A2	SCF1518G	A2-A5
SC181806	A2	SC242404NK	A2	SC303010NK	A2	SCF1616	A2-A5
SC181806G	A2	SC242406	A2	SC303012GNK	A2	SCF1616G	A2-A5
SC181806GNK	A2	SC242406G	A2	SC303012NK	A2	SCF1818	A2-A5
SC181806NK	A2	SC242406GNK	A2	SC303608GNK	A2	SCF1818G	A2-A5
SC181808	A2	SC242406NK	A2	SC303608NK	A2	SCF1824	A2-A5
SC181808G	A2	SC242408	A2	SC303610GNK	A2	SCF1824G	A2-A5
SC181808GNK	A2	SC242408G	A2	SC303610NK	A2	SCF1830	A2-A5
SC181808NK	A2	SC242408GNK	A2	SC303612GNK	A2	SCF1830G	A2-A5
SC181810	A2	SC242408NK	A2	SC303612NK	A2	SCF2424	A2-A5
SC181810G	A2	SC242410	A2	SC363608GNK	A2	SCF2424G	A2-A5
SC181810GNK	A2	SC242410G	A2	SC363608NK	A2	SDN12202108	F3-F5
SC181810NK	A2	SC242410GNK	A2	SC363610GNK	A2	SDN12202108PL	F3-F5
SC181812	A2	SC242410NK	A2	SC363610NK	A2	SDN12202110	F3-F5
SC181812G	A2	SC242412	A2	SC363612GNK	A2	SDN12202110PL	F3-F5
SC181812GNK	A2	SC242412G	A2	SC363612NK	A2	SDN12242108	F3-F5
SC181812NK	A2	SC242412GNK	A2	SCF0404	A2-A5	SDN12242108PL	F3-F5
SC1818G	A5	SC242412NK	A2	SCF0404G	A2-A5	SDN12242110	F3-F5
SC1824	A5	SC2424G	A5	SCF0406	A2-A5	SDN12242110PL	F3-F5
SC182404	A2	SC243006	A2	SCF0406G	A2-A5	SDN12242508	F3-F5
SC182404G	A2	SC243006G	A2	SCF0606	A2-A5	SDN12242508PL	F3-F5
SC182404GNK	A2	SC243006GNK	A2	SCF0606G	A2-A5	SDN12242510	F3-F5
SC182404NK	A2	SC243006NK	A2	SCF0608	A2-A5	SDN12242510PL	F3-F5
SC182406	A2	SC243008	A2	SCF0608G	A2-A5	SDN12302108	F3-F5
SC182406G	A2	SC243008G	A2	SCF0612	A2-A5	SDN12302108PL	F3-F5
SC182406GNK	A2	SC243008GNK	A2	SCF0612G	A2-A5	SDN12302110	F3-F5
SC182406NK	A2	SC243008NK	A2	SCF0808	A2-A5	SDN12302110PL	F3-F5
SC182408	A2	SC243010	A2	SCF0808G	A2-A5	SDN12302508	F3-F5
SC182408G	A2	SC243010G	A2	SCF0810	A2-A5	SDN12302508PL	F3-F5
SC182408GNK	A2	SC243010GNK	A2	SCF0810G	A2-A5	SDN12302510	F3-F5
SC182408NK	A2	SC243010NK	A2	SCF0812	A2-A5	SDN12302510PL	F3-F5
SC182410	A2	SC243012	A2	SCF0812G	A2-A5	SDN12302612	F3-F5
SC182410G	A2	SC243012G	A2	SCF1010	A2-A5	SDN12302612PL	F3-F5
SC182410GNK	A2	SC243012GNK	A2	SCF1010G	A2-A5	SDN12362508	F3-F5
SC182410NK	A2	SC243012NK	A2	SCF1012	A2-A5	SDN12362508PL	F3-F5
SC182412	A2	SC243608	A2	SCF1012G	A2-A5	SDN12362510	F3-F5