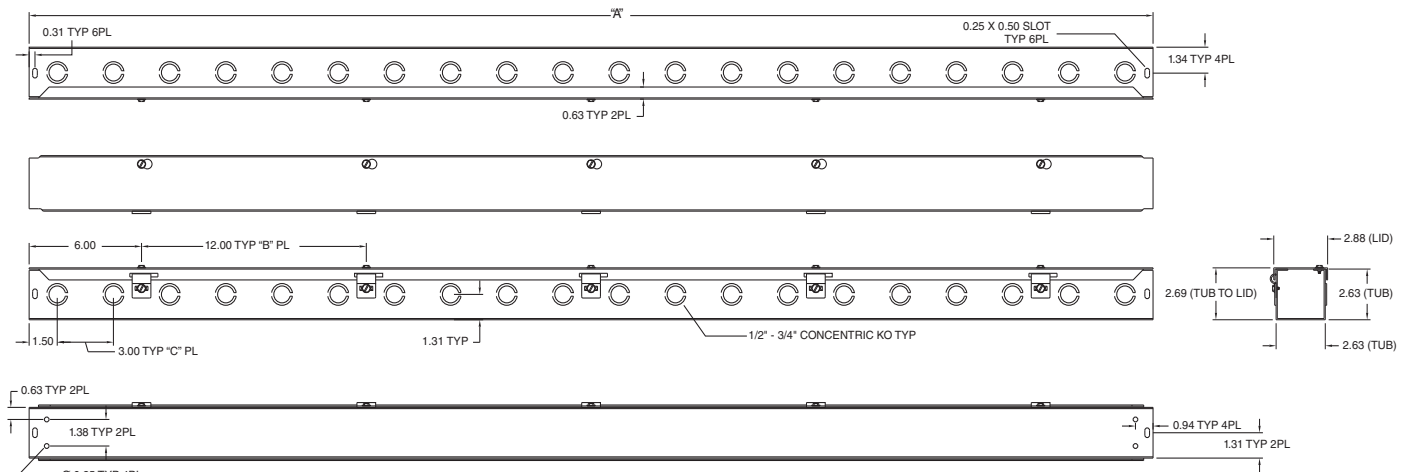


HS & S SERIES WIREWAY ACCESSORIES						
CATALOG NUMBER						DESCRIPTION
2.50 x 2.50 (64 x 64)	4.00 x 4.00 (102 x 102)	6.00 x 6.00 (152 x 152)	8.00 x 8.00 (203 x 203)	10.00 x 10.00* (254 x 254)	12.00 x 12.00* (305 x 305)	
E0202	E0404	E0606	E0808	—	—	End caps (with knockouts)
E0202NK	E0404NK	E0606NK	E0808NK	E1010NK	E1212NK	End caps (without knockouts)
T0202	T0404	T0606	T0808	T1010	T1212	Tee
X0202	X0404	X0606	X0808	X1010	X1212	Cross
AF0202	AF0404	AF0606	AF0808	AF1010	AF1212	Telescope
C0202	C0404	C0606	C0808	C1010	C1212	Connectors
PA0202	PA0404	PA0606	PA0808	PA1010	PA1212	Panel-Adapter
BH0202	BH0404	BH0606	BH0808	BH1010	BH1212	Bracket Hanger
—	R0402	R0604	R0806	R1008	R1208	Reducer
SL020290	SL040490	SL060690	SL080890	SL101090	SL121290	Sweep Elbow – 90°
L020290	L040490	L060690	L080890	L101090	L121290	Elbow – 90°
L020245	L040445	L060645	L080845	L101045	L121245	Elbow – 45°
S SERIES ACCESSORIES (GALVANIZED)						
—	E0404G	E0606G	E0808G	—	—	End caps (without knockouts)
E0202GNK	—	—	—	E1010GNK	E1212GNK	End caps (with knockouts)
T0202G	T0404G	T0606G	T0808G	T1010G	T1212G	Galvanized Tee
X0202G	X0404G	X0606G	X0808G	X1010G	X1212G	Galvanized Cross
AF0202G	AF0404G	AF0606G	AF0808G	AF1010G	AF1212G	Galvanized Telescope
C0202G	C0404G	C0606G	C0808G	C1010G	C1212G	Galvanized Connectors
PA0202G	PA0404G	PA0606G	PA0808G	PA1010G	PA1212G	Galvanized Panel-Adapter
BH0202G	BH0404G	BH0606G	BH0808G	BH1010G	BH1212G	Galvanized Bracket Hanger
—	R0402G	R0604G	R0806G	R1008G	R1208G	Galvanized Reducer
SL020290G	SL040490G	SL060690G	SL080890G	SL101090G	SL121290G	Galvanized Sweep Elbow – 90°
L020290G	L040490G	L060690G	L080890G	L101090G	L121290G	Galvanized Elbow – 90°
L020245G	L040445G	L060645G	L080845G	L101045G	L121245G	Galvanized Elbow – 45°

HS SERIES 2" STRAIGHT SECTION DIMENSIONS			
CATALOG NUMBER	A	B	C
HS221 & HS221NK	12.00 (300)	—	3.00 (75)
HS222 & HS222NK	24.00 (600)	1.00 (25)	7.00 (175)
HS223 & HS223NK	36.00 (900)	2.00 (50)	11.00 (275)
HS224 & HS224NK	48.00 (1200)	3.00 (75)	15.00 (375)
HS225 & HS225NK	60.00 (1500)	4.00 (100)	19.00 (475)
HS226 & HS226NK	72.00 (1800)	5.00 (125)	23.00 (575)
HS2210 & HS2210NK	120.00 (3000)	9.00 (225)	39.00 (975)

NK = No Knockouts



HS SERIES 2" STRAIGHT SECTION DIMENSIONS

PART NUMBER	PAGE	PART NUMBER	PAGE	PART NUMBER	PAGE	PART NUMBER	PAGE
BN4060404CHSSA	E6	C0404	G2	E0808G	G2	HFWADM124C	J20-J23
BN4060604	D2-D5	C0404G	G2	E0808NK	G2	HFWADM64C	J20-J23
BN4060604AL	E10	C0606	G2	E1010GNK	G2	HFWADM82C	J20-J23
BN4060604CH	D2-D5	C0606G	G2	E1010NK	G2	HFWADM84C	J20-J23
BN4060604CHAL	E10	C0808	G2	E1212GNK	G2	HFWCNP4C	J20-J23
BN4060604CHSS	E6	C0808G	G2	E1212NK	G2	HFWDF1212C	J20-J23
BN4060604CHSSA	E6	C1010	G2	EGL250	K24-K42	HFWDF1612C	J20-J23
BN4060604SS	E6	C1010G	G2	EGL250-120	K24-K42	HFWDF2016C	J20-J23
BN4080603	D2-D5	C1212	G2	EGL400	K24-K42	HFWDF2020C	J20-J23
BN4080603AL	E10	C1212G	G2	EGL400-120	K24-K42	HFWDF2420C	J20-J23
BN4080603CH	D2-D5	CTDD302410	B10-B13	EHG015	K24-K42	HFWDF2424C	J20-J23
BN4080603CHAL	E10	CTDD303012	B10-B13	EHG030	K24-K42	HFWDF3024C	J20-J23
BN4080604CHSS	E6	CTDD303612	B10-B13	EHG045	K24-K42	HFWDR12C	J20-J23
BN4080604CHSSA	E6	CTDD362412	B10-B13	EHG060	K24-K42	HFWDR16C	J20-J23
BN4080604SS	E6	CTDD363012	B10-B13	EHG075	K24-K42	HFWDR20C	J20-J23
BN4100804	D2-D5	CTDD363212	B10-B13	EHG100	K24-K42	HFWDR24C	J20-J23
BN4100804AL	E10	CTDD363612	B10-B13	EHG150	K24-K42	HFWGS12C	J20-J23
BN4100804CH	D2-D5	CTDD363616	B10-B13	ETF3000	K24-K42	HFWGS16C	J20-J23
BN4100804CHAL	E10	CTDD424212	B10-B13	ETF3000120F	K24-K42	HFWGS20C	J20-J23
BN4100804CHSS	E6	CTDD443012	B10-B13	ETR201	K24-K42	HFWGS24C	J20-J23
BN4100804CHSSA	E6	CTDD484816	B10-B13	ETR201F	K24-K42	HFWGS30C	J20-J23
BN4100804SS	E6	CTSD121810	B10-B13	ETR202	K24-K42	HFWGS36C	J20-J23
BN4100806CH	D2-D5	CTSD182410	B10-B13	ETR202F	K24-K42	HFWGS42C	J20-J23
BN4121005	D2-D5	CTSD202010	B10-B13	FK0608	J10	HFWGS48C	J20-J23
BN4121005AL	E10	CTSD202412	B10-B13	FK0610	J10	HFWGS60C	J20-J23
BN4121005CH	D2-D5	CTSD242412	B10-B13	FK0612	J10	HFWMC12C	J20-J23
BN4121005CHAL	E10	CTSD243012	B10-B13	FK0618	J10	HFWMC16C	J20-J23
BN4121005SS	E6	CTSD243612	B10-B13	FK0624	J10	HFWMC20C	J20-J23
BN4121006CHSS	E6	CTSD303612	B10-B13	FK1208	J10	HFWMC24C	J20-J23
BN4121006CHSSA	E6	DK12	J4	FK1210	J10	HFWMC30C	J20-J23
BN4121206CH	D2-D5	DK16	J4	FK1212	J10	HFWMC36C	J20-J23
BN4121206CHSS	E6	DK20	J4	FK1216	J10	HFWMC42C	J20-J23
BN4121206CHSSA	E6	DK24	J4	FK1218	J10	HFWMC48C	J20-J23
BN4141206	D2-D5	DK30	J4	FK1220	J10	HFWMC60C	J20-J23
BN4141206AL	E10	DK36	J4	FK1224	J10	HFWNSP1212C	J20-J23
BN4141206CH	D2-D5	DK42	J4	FK1808	J10	HFWNSP1612C	J20-J23
BN4141206CHAL	E10	DK48	J4	FK1810	J10	HFWNSP1616C	J20-J23
BN4141206CHSS	E6	DK60	J4	FK1812	J10	HFWNSP1620C	J20-J23
BN4141206CHSSA	E6	DK72	J4	FK1816	J10	HFWNSP2016C	J20-J23
BN4141206SS	E6	E0202	G2	FK2408	J10	HFWNSP2020C	J20-J23
BN4161406	D2-D5	E0202GNK	G2	FK2410	J10	HFWNSP2024C	J20-J23
BN4161406AL	E10	E0202NK	G2	FK2412	J10	HFWNSP2416C	J20-J23
BN4161406CH	D2-D5	E0404	G2	FM08603-4	K24-K42	HFWNSP2420C	J20-J23
BN4161406CHAL	E10	E0404G	G2	FM08604-5	K24-K42	HFWNSP2424C	J20-J23
BN4161406CHSS	E6	E0404NK	G2	FM08605-7	K24-K42	HFWNSP3020C	J20-J23
BN4161406CHSSA	E6	E0606	G2	FM08609-10	K24-K42	HFWNSP3024C	J20-J23
BN4161406SS	E6	E0606G	G2	HFWADM102C	J20-J23	HFWNSP3030C	J20-J23
C0202	G2	E0606NK	G2	HFWADM104C	J20-J23	HFWNSP3624C	J20-J23
C0202G	G2	E0808	G2	HFWADM122C	J20-J23	HFWNSP3630C	J20-J23