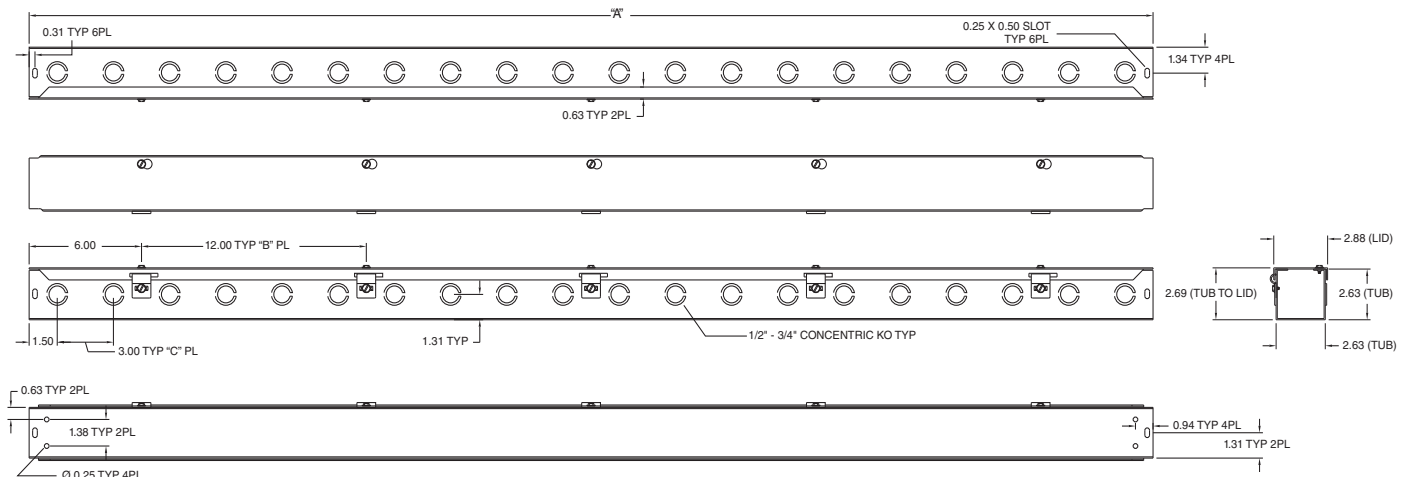


| HS & S SERIES WIREWAY ACCESSORIES | | | | | | |
|-----------------------------------|----------------------------|----------------------------|----------------------------|-------------------------------|-------------------------------|------------------------------|
| CATALOG NUMBER | | | | | | DESCRIPTION |
| 2.50 x 2.50 (64 x 64) | 4.00 x 4.00 (102 x 102) | 6.00 x 6.00 (152 x 152) | 8.00 x 8.00 (203 x 203) | 10.00 x 10.00* (254 x 254) | 12.00 x 12.00* (305 x 305) | |
| E0202 | E0404 | E0606 | E0808 | — | — | End caps (with knockouts) |
| E0202NK | E0404NK | E0606NK | E0808NK | E1010NK | E1212NK | End caps (without knockouts) |
| T0202 | T0404 | T0606 | T0808 | T1010 | T1212 | Tee |
| X0202 | X0404 | X0606 | X0808 | X1010 | X1212 | Cross |
| AF0202 | AF0404 | AF0606 | AF0808 | AF1010 | AF1212 | Telescope |
| C0202 | C0404 | C0606 | C0808 | C1010 | C1212 | Connectors |
| PA0202 | PA0404 | PA0606 | PA0808 | PA1010 | PA1212 | Panel-Adapter |
| BH0202 | BH0404 | BH0606 | BH0808 | BH1010 | BH1212 | Bracket Hanger |
| — | R0402 | R0604 | R0806 | R1008 | R1208 | Reducer |
| SL020290 | SL040490 | SL060690 | SL080890 | SL101090 | SL121290 | Sweep Elbow – 90° |
| L020290 | L040490 | L060690 | L080890 | L101090 | L121290 | Elbow – 90° |
| L020245 | L040445 | L060645 | L080845 | L101045 | L121245 | Elbow – 45° |
| S SERIES ACCESSORIES (GALVANIZED) | | | | | | |
| — | E0404G | E0606G | E0808G | — | — | End caps (without knockouts) |
| E0202GNK | — | — | — | E1010GNK | E1212GNK | End caps (with knockouts) |
| T0202G | T0404G | T0606G | T0808G | T1010G | T1212G | Galvanized Tee |
| X0202G | X0404G | X0606G | X0808G | X1010G | X1212G | Galvanized Cross |
| AF0202G | AF0404G | AF0606G | AF0808G | AF1010G | AF1212G | Galvanized Telescope |
| C0202G | C0404G | C0606G | C0808G | C1010G | C1212G | Galvanized Connectors |
| PA0202G | PA0404G | PA0606G | PA0808G | PA1010G | PA1212G | Galvanized Panel-Adapter |
| BH0202G | BH0404G | BH0606G | BH0808G | BH1010G | BH1212G | Galvanized Bracket Hanger |
| — | R0402G | R0604G | R0806G | R1008G | R1208G | Galvanized Reducer |
| SL020290G | SL040490G | SL060690G | SL080890G | SL101090G | SL121290G | Galvanized Sweep Elbow – 90° |
| L020290G | L040490G | L060690G | L080890G | L101090G | L121290G | Galvanized Elbow – 90° |
| L020245G | L040445G | L060645G | L080845G | L101045G | L121245G | Galvanized Elbow – 45° |

| HS SERIES 2" STRAIGHT SECTION DIMENSIONS | | | |
|--|---------------|------------|-------------|
| CATALOG NUMBER | A | B | C |
| HS221 & HS221NK | 12.00 (300) | — | 3.00 (75) |
| HS222 & HS222NK | 24.00 (600) | 1.00 (25) | 7.00 (175) |
| HS223 & HS223NK | 36.00 (900) | 2.00 (50) | 11.00 (275) |
| HS224 & HS224NK | 48.00 (1200) | 3.00 (75) | 15.00 (375) |
| HS225 & HS225NK | 60.00 (1500) | 4.00 (100) | 19.00 (475) |
| HS226 & HS226NK | 72.00 (1800) | 5.00 (125) | 23.00 (575) |
| HS2210 & HS2210NK | 120.00 (3000) | 9.00 (225) | 39.00 (975) |

NK = No Knockouts



HS SERIES 2" STRAIGHT SECTION DIMENSIONS

| PART NUMBER | PAGE | PART NUMBER | PAGE | PART NUMBER | PAGE | PART NUMBER | PAGE |
|---------------------|-------|-----------------|---------|------------------|---------|------------------|---------|
| BN4060404CHSSA..... | E6 | C0404..... | G2 | E0808G..... | G2 | HFWADM124C..... | J20-J23 |
| BN4060604..... | D2-D5 | C0404G..... | G2 | E0808NK..... | G2 | HFWADM64C..... | J20-J23 |
| BN4060604AL..... | E10 | C0606..... | G2 | E1010GNK..... | G2 | HFWADM82C..... | J20-J23 |
| BN4060604CH..... | D2-D5 | C0606G..... | G2 | E1010NK..... | G2 | HFWADM84C..... | J20-J23 |
| BN4060604CHAL..... | E10 | C0808..... | G2 | E1212GNK..... | G2 | HFWCNP4C..... | J20-J23 |
| BN4060604CHSS..... | E6 | C0808G..... | G2 | E1212NK..... | G2 | HFWDF1212C..... | J20-J23 |
| BN4060604CHSSA..... | E6 | C1010..... | G2 | EGL250..... | K24-K42 | HFWDF1612C..... | J20-J23 |
| BN4060604SS..... | E6 | C1010G..... | G2 | EGL250-120..... | K24-K42 | HFWDF2016C..... | J20-J23 |
| BN4080603..... | D2-D5 | C1212..... | G2 | EGL400..... | K24-K42 | HFWDF2020C..... | J20-J23 |
| BN4080603AL..... | E10 | C1212G..... | G2 | EGL400-120..... | K24-K42 | HFWDF2420C..... | J20-J23 |
| BN4080603CH..... | D2-D5 | CTDD302410..... | B10-B13 | EHG015..... | K24-K42 | HFWDF2424C..... | J20-J23 |
| BN4080603CHAL..... | E10 | CTDD303012..... | B10-B13 | EHG030..... | K24-K42 | HFWDF3024C..... | J20-J23 |
| BN4080604CHSS..... | E6 | CTDD303612..... | B10-B13 | EHG045..... | K24-K42 | HFWDR12C..... | J20-J23 |
| BN4080604CHSSA..... | E6 | CTDD362412..... | B10-B13 | EHG060..... | K24-K42 | HFWDR16C..... | J20-J23 |
| BN4080604SS..... | E6 | CTDD363012..... | B10-B13 | EHG075..... | K24-K42 | HFWDR20C..... | J20-J23 |
| BN4100804..... | D2-D5 | CTDD363212..... | B10-B13 | EHG100..... | K24-K42 | HFWDR24C..... | J20-J23 |
| BN4100804AL..... | E10 | CTDD363612..... | B10-B13 | EHG150..... | K24-K42 | HFWGS12C..... | J20-J23 |
| BN4100804CH..... | D2-D5 | CTDD363616..... | B10-B13 | ETF3000..... | K24-K42 | HFWGS16C..... | J20-J23 |
| BN4100804CHAL..... | E10 | CTDD424212..... | B10-B13 | ETF3000120F..... | K24-K42 | HFWGS20C..... | J20-J23 |
| BN4100804CHSS..... | E6 | CTDD443012..... | B10-B13 | ETR201..... | K24-K42 | HFWGS24C..... | J20-J23 |
| BN4100804CHSSA..... | E6 | CTDD484816..... | B10-B13 | ETR201F..... | K24-K42 | HFWGS30C..... | J20-J23 |
| BN4100804SS..... | E6 | CTSD121810..... | B10-B13 | ETR202..... | K24-K42 | HFWGS36C..... | J20-J23 |
| BN4100806CH..... | D2-D5 | CTSD182410..... | B10-B13 | ETR202F..... | K24-K42 | HFWGS42C..... | J20-J23 |
| BN4121005..... | D2-D5 | CTSD202010..... | B10-B13 | FK0608..... | J10 | HFWGS48C..... | J20-J23 |
| BN4121005AL..... | E10 | CTSD202412..... | B10-B13 | FK0610..... | J10 | HFWGS60C..... | J20-J23 |
| BN4121005CH..... | D2-D5 | CTSD242412..... | B10-B13 | FK0612..... | J10 | HFWMC12C..... | J20-J23 |
| BN4121005CHAL..... | E10 | CTSD243012..... | B10-B13 | FK0618..... | J10 | HFWMC16C..... | J20-J23 |
| BN4121005SS..... | E6 | CTSD243612..... | B10-B13 | FK0624..... | J10 | HFWMC20C..... | J20-J23 |
| BN4121006CHSS..... | E6 | CTSD303612..... | B10-B13 | FK1208..... | J10 | HFWMC24C..... | J20-J23 |
| BN4121006CHSSA..... | E6 | DK12..... | J4 | FK1210..... | J10 | HFWMC30C..... | J20-J23 |
| BN4121206CH..... | D2-D5 | DK16..... | J4 | FK1212..... | J10 | HFWMC36C..... | J20-J23 |
| BN4121206CHSS..... | E6 | DK20..... | J4 | FK1216..... | J10 | HFWMC42C..... | J20-J23 |
| BN4121206CHSSA..... | E6 | DK24..... | J4 | FK1218..... | J10 | HFWMC48C..... | J20-J23 |
| BN4141206..... | D2-D5 | DK30..... | J4 | FK1220..... | J10 | HFWMC60C..... | J20-J23 |
| BN4141206AL..... | E10 | DK36..... | J4 | FK1224..... | J10 | HFWNSP1212C..... | J20-J23 |
| BN4141206CH..... | D2-D5 | DK42..... | J4 | FK1808..... | J10 | HFWNSP1612C..... | J20-J23 |
| BN4141206CHAL..... | E10 | DK48..... | J4 | FK1810..... | J10 | HFWNSP1616C..... | J20-J23 |
| BN4141206CHSS..... | E6 | DK60..... | J4 | FK1812..... | J10 | HFWNSP1620C..... | J20-J23 |
| BN4141206CHSSA..... | E6 | DK72..... | J4 | FK1816..... | J10 | HFWNSP2016C..... | J20-J23 |
| BN4141206SS..... | E6 | E0202..... | G2 | FK2408..... | J10 | HFWNSP2020C..... | J20-J23 |
| BN4161406..... | D2-D5 | E0202GNK..... | G2 | FK2410..... | J10 | HFWNSP2024C..... | J20-J23 |
| BN4161406AL..... | E10 | E0202NK..... | G2 | FK2412..... | J10 | HFWNSP2416C..... | J20-J23 |
| BN4161406CH..... | D2-D5 | E0404..... | G2 | FM08603-4..... | K24-K42 | HFWNSP2420C..... | J20-J23 |
| BN4161406CHAL..... | E10 | E0404G..... | G2 | FM08604-5..... | K24-K42 | HFWNSP2424C..... | J20-J23 |
| BN4161406CHSS..... | E6 | E0404NK..... | G2 | FM08605-7..... | K24-K42 | HFWNSP3020C..... | J20-J23 |
| BN4161406CHSSA..... | E6 | E0606..... | G2 | FM08609-10..... | K24-K42 | HFWNSP3024C..... | J20-J23 |
| BN4161406SS..... | E6 | E0606G..... | G2 | HFWADM102C..... | J20-J23 | HFWNSP3030C..... | J20-J23 |
| C0202..... | G2 | E0606NK..... | G2 | HFWADM104C..... | J20-J23 | HFWNSP3624C..... | J20-J23 |
| C0202G..... | G2 | E0808..... | G2 | HFWADM122C..... | J20-J23 | HFWNSP3630C..... | J20-J23 |