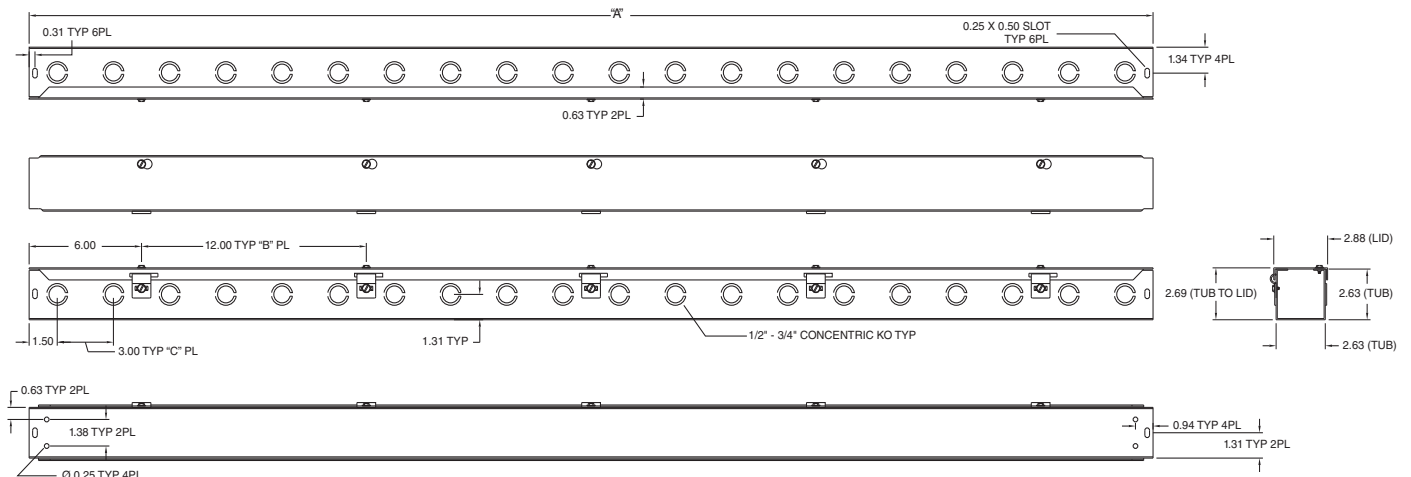


| HS & S SERIES WIREWAY ACCESSORIES |                            |                            |                            |                               |                               |                              |
|-----------------------------------|----------------------------|----------------------------|----------------------------|-------------------------------|-------------------------------|------------------------------|
| CATALOG NUMBER                    |                            |                            |                            |                               |                               | DESCRIPTION                  |
| 2.50 x 2.50<br>(64 x 64)          | 4.00 x 4.00<br>(102 x 102) | 6.00 x 6.00<br>(152 x 152) | 8.00 x 8.00<br>(203 x 203) | 10.00 x 10.00*<br>(254 x 254) | 12.00 x 12.00*<br>(305 x 305) |                              |
| E0202                             | E0404                      | E0606                      | E0808                      | —                             | —                             | End caps (with knockouts)    |
| E0202NK                           | E0404NK                    | E0606NK                    | E0808NK                    | E1010NK                       | E1212NK                       | End caps (without knockouts) |
| T0202                             | T0404                      | T0606                      | T0808                      | T1010                         | T1212                         | Tee                          |
| X0202                             | X0404                      | X0606                      | X0808                      | X1010                         | X1212                         | Cross                        |
| AF0202                            | AF0404                     | AF0606                     | AF0808                     | AF1010                        | AF1212                        | Telescope                    |
| C0202                             | C0404                      | C0606                      | C0808                      | C1010                         | C1212                         | Connectors                   |
| PA0202                            | PA0404                     | PA0606                     | PA0808                     | PA1010                        | PA1212                        | Panel-Adapter                |
| BH0202                            | BH0404                     | BH0606                     | BH0808                     | BH1010                        | BH1212                        | Bracket Hanger               |
| —                                 | R0402                      | R0604                      | R0806                      | R1008                         | R1208                         | Reducer                      |
| SL020290                          | SL040490                   | SL060690                   | SL080890                   | SL101090                      | SL121290                      | Sweep Elbow – 90°            |
| L020290                           | L040490                    | L060690                    | L080890                    | L101090                       | L121290                       | Elbow – 90°                  |
| L020245                           | L040445                    | L060645                    | L080845                    | L101045                       | L121245                       | Elbow – 45°                  |
| S SERIES ACCESSORIES (GALVANIZED) |                            |                            |                            |                               |                               |                              |
| —                                 | E0404G                     | E0606G                     | E0808G                     | —                             | —                             | End caps (without knockouts) |
| E0202GNK                          | —                          | —                          | —                          | E1010GNK                      | E1212GNK                      | End caps (with knockouts)    |
| T0202G                            | T0404G                     | T0606G                     | T0808G                     | T1010G                        | T1212G                        | Galvanized Tee               |
| X0202G                            | X0404G                     | X0606G                     | X0808G                     | X1010G                        | X1212G                        | Galvanized Cross             |
| AF0202G                           | AF0404G                    | AF0606G                    | AF0808G                    | AF1010G                       | AF1212G                       | Galvanized Telescope         |
| C0202G                            | C0404G                     | C0606G                     | C0808G                     | C1010G                        | C1212G                        | Galvanized Connectors        |
| PA0202G                           | PA0404G                    | PA0606G                    | PA0808G                    | PA1010G                       | PA1212G                       | Galvanized Panel-Adapter     |
| BH0202G                           | BH0404G                    | BH0606G                    | BH0808G                    | BH1010G                       | BH1212G                       | Galvanized Bracket Hanger    |
| —                                 | R0402G                     | R0604G                     | R0806G                     | R1008G                        | R1208G                        | Galvanized Reducer           |
| SL020290G                         | SL040490G                  | SL060690G                  | SL080890G                  | SL101090G                     | SL121290G                     | Galvanized Sweep Elbow – 90° |
| L020290G                          | L040490G                   | L060690G                   | L080890G                   | L101090G                      | L121290G                      | Galvanized Elbow – 90°       |
| L020245G                          | L040445G                   | L060645G                   | L080845G                   | L101045G                      | L121245G                      | Galvanized Elbow – 45°       |

| HS SERIES 2" STRAIGHT SECTION DIMENSIONS |               |            |             |
|--|---------------|------------|-------------|
| CATALOG NUMBER                           | A             | B          | C           |
| HS221 & HS221NK                          | 12.00 (300)   | —          | 3.00 (75)   |
| HS222 & HS222NK                          | 24.00 (600)   | 1.00 (25)  | 7.00 (175)  |
| HS223 & HS223NK                          | 36.00 (900)   | 2.00 (50)  | 11.00 (275) |
| HS224 & HS224NK                          | 48.00 (1200)  | 3.00 (75)  | 15.00 (375) |
| HS225 & HS225NK                          | 60.00 (1500)  | 4.00 (100) | 19.00 (475) |
| HS226 & HS226NK                          | 72.00 (1800)  | 5.00 (125) | 23.00 (575) |
| HS2210 & HS2210NK                        | 120.00 (3000) | 9.00 (225) | 39.00 (975) |

NK = No Knockouts



**HS SERIES 2" STRAIGHT SECTION DIMENSIONS**

| PART NUMBER    | PAGE  | PART NUMBER | PAGE    | PART NUMBER | PAGE    | PART NUMBER | PAGE    |
|----------------|-------|-------------|---------|-------------|---------|-------------|---------|
| BN4060404CHSSA | E6    | C0404       | G2      | E0808G      | G2      | HFWADM124C  | J20-J23 |
| BN4060604      | D2-D5 | C0404G      | G2      | E0808NK     | G2      | HFWADM64C   | J20-J23 |
| BN4060604AL    | E10   | C0606       | G2      | E1010GNK    | G2      | HFWADM82C   | J20-J23 |
| BN4060604CH    | D2-D5 | C0606G      | G2      | E1010NK     | G2      | HFWADM84C   | J20-J23 |
| BN4060604CHAL  | E10   | C0808       | G2      | E1212GNK    | G2      | HFWCNP4C    | J20-J23 |
| BN4060604CHSS  | E6    | C0808G      | G2      | E1212NK     | G2      | HFWDF1212C  | J20-J23 |
| BN4060604CHSSA | E6    | C1010       | G2      | EGL250      | K24-K42 | HFWDF1612C  | J20-J23 |
| BN4060604SS    | E6    | C1010G      | G2      | EGL250-120  | K24-K42 | HFWDF2016C  | J20-J23 |
| BN4080603      | D2-D5 | C1212       | G2      | EGL400      | K24-K42 | HFWDF2020C  | J20-J23 |
| BN4080603AL    | E10   | C1212G      | G2      | EGL400-120  | K24-K42 | HFWDF2420C  | J20-J23 |
| BN4080603CH    | D2-D5 | CTDD302410  | B10-B13 | EHG015      | K24-K42 | HFWDF2424C  | J20-J23 |
| BN4080603CHAL  | E10   | CTDD303012  | B10-B13 | EHG030      | K24-K42 | HFWDF3024C  | J20-J23 |
| BN4080604CHSS  | E6    | CTDD303612  | B10-B13 | EHG045      | K24-K42 | HFWDR12C    | J20-J23 |
| BN4080604CHSSA | E6    | CTDD362412  | B10-B13 | EHG060      | K24-K42 | HFWDR16C    | J20-J23 |
| BN4080604SS    | E6    | CTDD363012  | B10-B13 | EHG075      | K24-K42 | HFWDR20C    | J20-J23 |
| BN4100804      | D2-D5 | CTDD363212  | B10-B13 | EHG100      | K24-K42 | HFWDR24C    | J20-J23 |
| BN4100804AL    | E10   | CTDD363612  | B10-B13 | EHG150      | K24-K42 | HFWGS12C    | J20-J23 |
| BN4100804CH    | D2-D5 | CTDD363616  | B10-B13 | ETF3000     | K24-K42 | HFWGS16C    | J20-J23 |
| BN4100804CHAL  | E10   | CTDD424212  | B10-B13 | ETF3000120F | K24-K42 | HFWGS20C    | J20-J23 |
| BN4100804CHSS  | E6    | CTDD443012  | B10-B13 | ETR201      | K24-K42 | HFWGS24C    | J20-J23 |
| BN4100804CHSSA | E6    | CTDD484816  | B10-B13 | ETR201F     | K24-K42 | HFWGS30C    | J20-J23 |
| BN4100804SS    | E6    | CTSD121810  | B10-B13 | ETR202      | K24-K42 | HFWGS36C    | J20-J23 |
| BN4100806CH    | D2-D5 | CTSD182410  | B10-B13 | ETR202F     | K24-K42 | HFWGS42C    | J20-J23 |
| BN4121005      | D2-D5 | CTSD202010  | B10-B13 | FK0608      | J10     | HFWGS48C    | J20-J23 |
| BN4121005AL    | E10   | CTSD202412  | B10-B13 | FK0610      | J10     | HFWGS60C    | J20-J23 |
| BN4121005CH    | D2-D5 | CTSD242412  | B10-B13 | FK0612      | J10     | HFWMC12C    | J20-J23 |
| BN4121005CHAL  | E10   | CTSD243012  | B10-B13 | FK0618      | J10     | HFWMC16C    | J20-J23 |
| BN4121005SS    | E6    | CTSD243612  | B10-B13 | FK0624      | J10     | HFWMC20C    | J20-J23 |
| BN4121006CHSS  | E6    | CTSD303612  | B10-B13 | FK1208      | J10     | HFWMC24C    | J20-J23 |
| BN4121006CHSSA | E6    | DK12        | J4      | FK1210      | J10     | HFWMC30C    | J20-J23 |
| BN4121206CH    | D2-D5 | DK16        | J4      | FK1212      | J10     | HFWMC36C    | J20-J23 |
| BN4121206CHSS  | E6    | DK20        | J4      | FK1216      | J10     | HFWMC42C    | J20-J23 |
| BN4121206CHSSA | E6    | DK24        | J4      | FK1218      | J10     | HFWMC48C    | J20-J23 |
| BN4141206      | D2-D5 | DK30        | J4      | FK1220      | J10     | HFWMC60C    | J20-J23 |
| BN4141206AL    | E10   | DK36        | J4      | FK1224      | J10     | HFWNSP1212C | J20-J23 |
| BN4141206CH    | D2-D5 | DK42        | J4      | FK1808      | J10     | HFWNSP1612C | J20-J23 |
| BN4141206CHAL  | E10   | DK48        | J4      | FK1810      | J10     | HFWNSP1616C | J20-J23 |
| BN4141206CHSS  | E6    | DK60        | J4      | FK1812      | J10     | HFWNSP1620C | J20-J23 |
| BN4141206CHSSA | E6    | DK72        | J4      | FK1816      | J10     | HFWNSP2016C | J20-J23 |
| BN4141206SS    | E6    | E0202       | G2      | FK2408      | J10     | HFWNSP2020C | J20-J23 |
| BN4161406      | D2-D5 | E0202GNK    | G2      | FK2410      | J10     | HFWNSP2024C | J20-J23 |
| BN4161406AL    | E10   | E0202NK     | G2      | FK2412      | J10     | HFWNSP2416C | J20-J23 |
| BN4161406CH    | D2-D5 | E0404       | G2      | FM08603-4   | K24-K42 | HFWNSP2420C | J20-J23 |
| BN4161406CHAL  | E10   | E0404G      | G2      | FM08604-5   | K24-K42 | HFWNSP2424C | J20-J23 |
| BN4161406CHSS  | E6    | E0404NK     | G2      | FM08605-7   | K24-K42 | HFWNSP3020C | J20-J23 |
| BN4161406CHSSA | E6    | E0606       | G2      | FM08609-10  | K24-K42 | HFWNSP3024C | J20-J23 |
| BN4161406SS    | E6    | E0606G      | G2      | HFWADM102C  | J20-J23 | HFWNSP3030C | J20-J23 |
| C0202          | G2    | E0606NK     | G2      | HFWADM104C  | J20-J23 | HFWNSP3624C | J20-J23 |
| C0202G         | G2    | E0808       | G2      | HFWADM122C  | J20-J23 | HFWNSP3630C | J20-J23 |