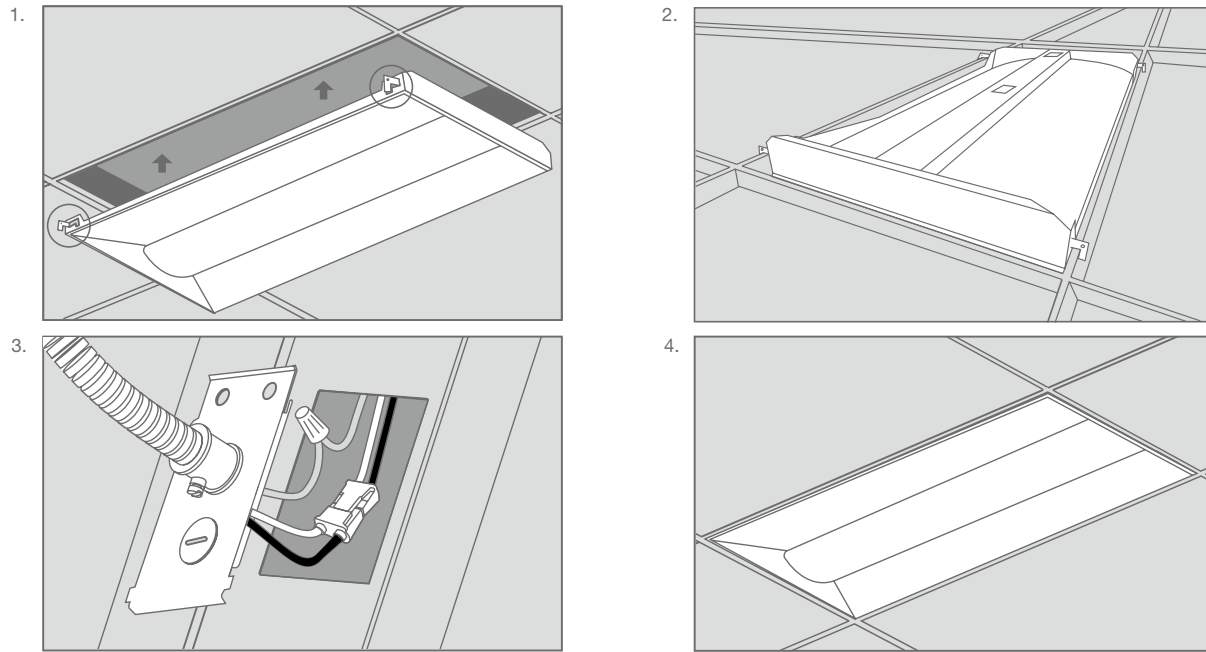


## INSTALLATION GUIDE



### TROFFER INSTALLATION

- Step 1.** Make sure the **POWER IS TURNED OFF** at the source to the location at which you are installing the product.
- Step 2.** Remove existing troffer if applicable.
- Step 3.** Pull L tabs out on each corner. (fig. 1)
- Step 4.** Place troffer in ceiling making sure each L tab is securely hooked on T-bar grid. (fig. 1 & fig. 2)
- Step 5.** Remove power conduit plate. Insert power supply into power conduit plate using appropriate electrical fittings. (fig. 3)
- Step 6.** Return power back to the source and installation is complete. (fig. 4)

## SPECIFICATIONS

Product Model	97788 32TROF22DIM/835/277V	97789 32TROF22DIM/840/277V
Type	2x2' Troffer	2x2' Troffer
Power (W)	32	32
Voltage - Frequency	120-277V 50-60Hz	120-277V 50-60Hz
Color Temp. (ANSI)	Neutral White 3500K	Cool White 4000K
CRI (Ra)	80	80
Typical lumens (lm)	3550	3550
Efficacy (LPW)	111	111
Beam Angle	120°	120°
Dimmable	Yes	Yes
Power Factor	0.9	0.9
THD	<20%	<20%
Rated Lifetime - L85 (hrs.)	50,000	50,000
Dia. x MOL	23.78"x23.78"(604x604mm)	23.78"x23.78"(604x604mm)
Weight (lb. / g)	8.95lb. / 4.06kg	8.95lb. / 4.06kg