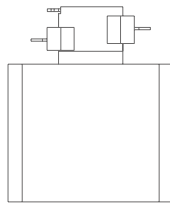
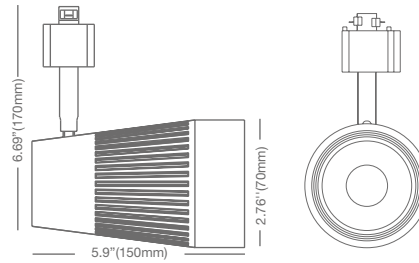
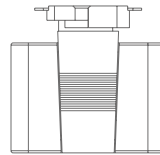


# TRACK M 22W HIGH CRI

**Voltage:** 120V  
**Dimmable:** Yes  
**PF:** 0.9  
**Lifetime:** 40,000 hrs  
**Weight:** 0.52lb / 236g  
**Track type:**

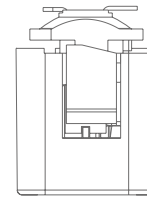


H-Halo Track



J- Juno Track

For use with single and two-circuit track applications



L- Lightolier Track (MTO)

For use with single and two-circuit track applications

## SPECIFICATIONS\*

Model	Product	Power (W)	CCT	CRI (typ.)	R9 / R13 (typ.)	Lumens (lm)	LPW	Beam Angle	CBCP (cd)
<a href="#">22TRMG4DIM/927/W/H</a>	97587	22	Warm White 2700K	90	60 / 90	1200	55	25°/38°/15°	6300/3250/12,200
<a href="#">22TRMG4DIM/930/W/H</a>	97599	22	Warm White 3000K	90	60 / 90	1250	57	25°/38°/15°	6700/3450/13,000
<a href="#">22TRMG4DIM/927/W/J</a>	97588	22	Warm White 2700K	90	60 / 90	1200	55	25°/38°/15°	6300/3250/12,200
<a href="#">22TRMG4DIM/930/W/J</a>	97600	22	Warm White 3000K	90	60 / 90	1250	57	25°/38°/15°	6700/3450/13,000
<a href="#">22TRMG4DIM/927/B/H</a> •	97590	22	Warm White 2700K	90	60 / 90	1200	55	25°/38°/15°	6300/3250/12,200
<a href="#">22TRMG4DIM/930/B/H</a> •	97602	22	Warm White 3000K	90	60 / 90	1250	57	25°/38°/15°	6700/3450/13,000
<a href="#">22TRMG4DIM/927/B/J</a> •	97591	22	Warm White 2700K	90	60 / 90	1200	55	25°/38°/15°	6300/3250/12,200
<a href="#">22TRMG4DIM/930/B/J</a> •	97603	22	Warm White 3000K	90	60 / 90	1250	57	25°/38°/15°	6700/3450/13,000

\* Specification data is preliminary and may be subject to change

• Black finish