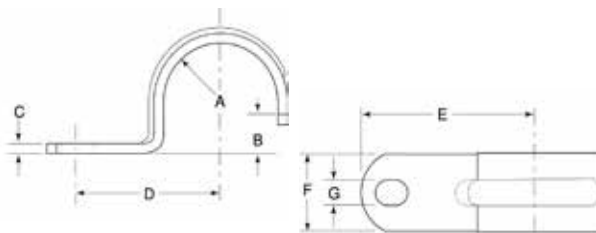
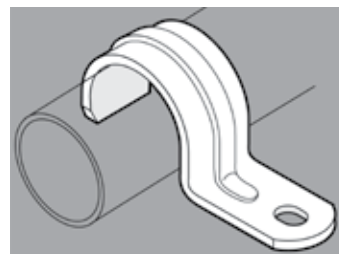


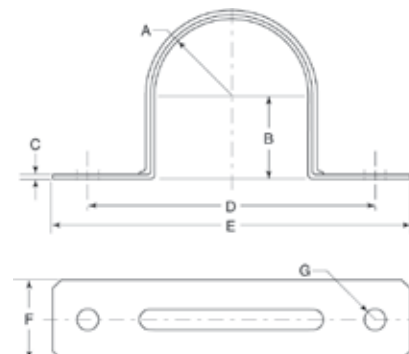
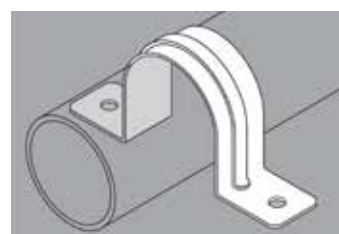
## One Hole Strap

Part Number	Pipe/Rigid Conduit Size	Weight/ 100 (lbs.)	Dimension (in.)						
			A	B	C	D	E	F	G
3050	½ in.	4	.420	.390	.065-.073	.937	1.375	.625	.250
3075	¾ in.	5	.525	.500	.072-.080	1.031	1.562	.750	.250
3100	1 in.	8	.655	.620	.085-.095	1.25	1.812	.875	.312
3125	1-¼ in.	12	.830	.800	.098-.110	1.500	2.000	.875	.375
3150	1-½ in.	15	.950	.920	.098-.110	1.875	2.500	1.000	.437
3200	2 in.	24	1.185	1.150	.115-.125	2.125	2.750	1.125	.562
3250	2-½ in.	43	1.437	1.400	.145-.155	2.562	3.312	1.250	.562
3300	3 in.	47	1.750	1.700	.145-.155	2.875	3.625	1.250	.562
3350	3-½ in.	66	2.000	1.950	.175-.185	3.250	4.000	1.250	.562
3400	4 in.	72	2.250	2.200	.175-.185	3.500	4.250	1.250	.562



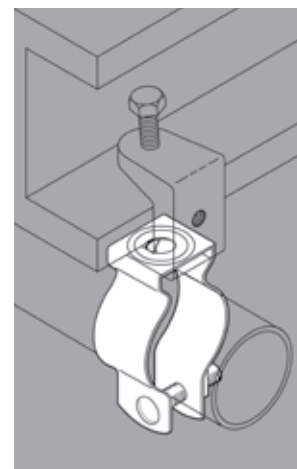
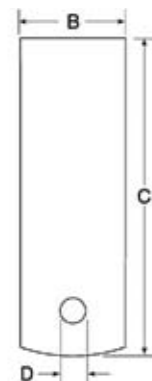
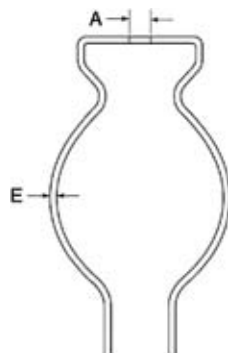
## Two Hole Strap

Part Number	Pipe/Rigid Conduit Size	Weight/ 100 (lbs.)	Dimension (in.)						
			A	B	C	D	E	F	G
3038-2	⅜ in.	2	.35	.32	.024 - .030	1.56	2.00	.50	.188
3050-2	½ in.	2	.42	.39	.024 - .030	1.78	2.25	.56	.188
3075-2	¾ in.	3	.52	.50	.024 - .030	2.18	2.62	.62	.188
3100-2	1 in.	4	.65	.62	.033 - .038	2.53	3.20	.75	.250
3125-2	1-¼ in.	6	.83	.80	.033 - .038	3.16	4.00	.87	.250
3150-2	1-½ in.	9	.95	.92	.043 - .050	3.37	4.20	.93	.250
3200-2	2 in.	11	1.18	1.15	.043 - .050	4.25	5.12	1.00	.375
3250-2	2-½ in.	16	1.43	1.40	.053 - .060	4.95	5.87	1.00	.375
3300-2	3 in.	20	1.75	1.70	.053 - .060	5.50	6.50	1.00	.375
3350-2	3-½ in.	26	2.00	1.95	.068 - .075	6.18	7.12	1.00	.437
3400-2	4 in.	29	2.25	2.20	.068 - .075	6.81	7.75	1.00	.437



## Conduit Hanger

Part Number	Conduit Size	Weight/ 100 (lbs.)	Dimension (in.)				
			A	B	C	D	E
6050	½ in.	7	0.25	0.750	1.90	0.275	0.050
6075	¾ in.	8	0.25	0.875	2.10	0.275	0.050
6100	1 in.	9	0.25	0.875	2.40	0.275	0.050
6125	1-¼ in.	11	0.25	0.875	2.80	0.275	0.050
6150	1-½ in.	17	0.31	1.00	3.25	0.275	0.060
6200	2 in.	23	0.31	1.25	3.75	0.275	0.060
6250	2-½ in.	33	0.375	1.125	4.625	0.3125	0.075
6300	3 in.	38	0.375	1.187	5.50	0.3125	0.075
6400	4 in.	48	0.375	1.250	6.25	0.3125	0.075



- Sizes ½" - 2" supplied complete with Type 316 SS slotted machine screw and nut.
- 2-½", 3", and 4" sizes supplied complete with Type 316 SS carriage bolt and nut.