

Illuminated Mushroom-Head Push Buttons



Selection Process

Select operator below	+	Select power supply from back cover fold-out	+	Select contact block from back cover fold-out	+	Select nameplate, if required, from pages 36-38	=	Complete unit

Operators

Replace **asterisk (*)** in catalog number with color code digit from colors table below.

Style	Head Diameter	Push-Pull						List Price, GO-10GC
		Momentary		2-Position Maintained		3-Position Maintained Push-Momentary Pull	3-Position Momentary Push-Momentary Pull	
		Catalog No.	List Price, GO-10GC	Catalog No.	List Price, GO-10GC	Catalog No.	Catalog No.	
● Polished Chrome	40mm	P9CEM4*L	\$16.50	P9CET4*L1	\$23.50	P9CET4*L2	P9CET4*L3	\$31.00
○ Satin Chrome	40mm	P9MEM4*L	16.50	P9MET4*L1	23.50	P9MET4*L2	P9MET4*L3	31.00
● Round Engineered Plastic	40mm	P9XEM4*L	16.50	P9XET4*L1	23.50	P9XET4*L2	P9XET4*L3	31.00
□ Square Engineered Plastic	29mm	P9SEM3*L	16.50	—	—	—	—	—
	40mm	—	—	P9SET4*L1	23.50	P9SET4*L2	P9SET4*L3	31.00

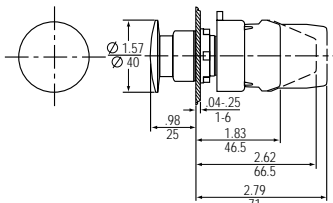
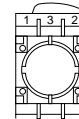
*Colors

Color	Red	Green	Yellow	Blue	White	Orange	Clear
*Color Code	R	V	G	L	B	A	I

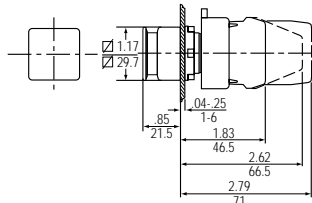
Cams

Note selection and position of contact block(s).

Operator Type Cam	Position			Screw Terminal Contact Block		Quick Connect Contact Block	
	Push	Center	Pull	Position 1	Position 2	Position 1	Position 2
Maintained Push, Momentary Pull	O	X	X	P9B01VR	—	—	—
	O	O	X	—	P9B01VN	—	—
Momentary Push-Momentary Pull	X	O	O	—	P9B10VN	—	P9B10FN
	O	O	X	P9B01VN	—	P9B01FN	—
	X	O	O	P9B11VN	—	—	—

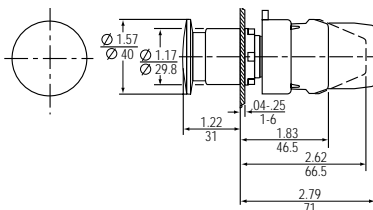


Round Illuminated Mushroom-head Push Button (40 mm)

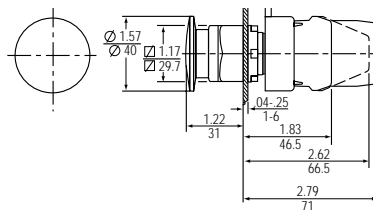


Square Illuminated Mushroom-head Push Button

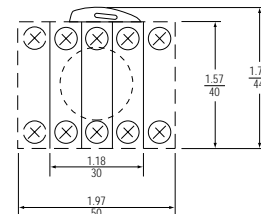
Dimensions shown in $\frac{\text{inches}}{\text{millimeters}}$



Round Illuminated Push-Pull Mushroom-head Push Button



Square Illuminated Push-Pull Mushroom-head Push Button



Typical Back Side View

Selection & drawing data: pages 4-5. Accessories: pages 46-47. Technical data: pages 6-11. Color caps, heads, lenses and handles are also stocked separately: page 41.