

Pilot and Signaling Devices

Heavy-Duty 22.5 mm Watertight/Oiltight Selector Switches

C-2000

Section 9

2-Position Knob Operated Selector Switches

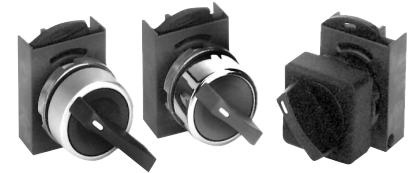
Non-Illuminated

600 VAC Max., 300 VDC Max.

10 Amps Continuous AC, 2.5 Amps Continuous DC

Selection Process

Select operator + Select contact block(s) + Select nameplate, if required, = Complete Unit
 below from page 9-93 from pages 9-95 to 9-97



2-Position Selector Switches

Knob 2 Position

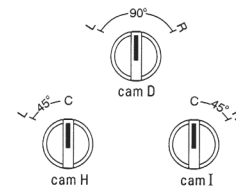
Position Type	Operator Style	Release Type	Cam Code	Product Number	List Price GO-10GC
2-Position	Round Polished Chrome	Maintained	D, I, H	P9CSM†0*	\$14.50
2-Position	Round Satin Chrome	Maintained	D, I, H	P9MSM†0*	\$14.50
2-Position	Round Engineered Plastic	Maintained	D, I, H	P9XSM†0*	\$14.50
2-Position	Square Engineered Plastic	Maintained	D, I, H	P9SSM†0*	\$14.50
2-Position	Round Polished Chrome	Spring Return L → C	H	P9CSMH1*	\$16.50
2-Position	Round Satin Chrome	Spring Return L → C	H	P9MSMH1*	\$16.50
2-Position	Round Engineered Plastic	Spring Return L → C	H	P9XSMH1*	\$16.50
2-Position	Square Engineered Plastic	Spring Return L → C	H	P9SSMH1*	\$16.50
2-Position	Round Polished Chrome	Spring Return L ← R	D	P9CSMD5*	\$16.50
2-Position	Round Satin Chrome	Spring Return L ← R	D	P9MSMD5*	\$16.50
2-Position	Round Engineered Plastic	Spring Return L ← R	D	P9XSM5*	\$16.50
2-Position	Square Engineered Plastic	Spring Return L ← R	D	P9SSMD5*	\$16.50
2-Position	Round Polished Chrome	Spring Return C ← R	I	P9CSMI5*	\$16.50
2-Position	Round Satin Chrome	Spring Return C ← R	I	P9MSMI5*	\$16.50
2-Position	Round Engineered Plastic	Spring Return C ← R	I	P9XSMI5*	\$16.50
2-Position	Square Engineered Plastic	Spring Return C ← R	I	P9SSMI5*	\$16.50

Replace double dagger (‡) in maintained product number with cam code from cams table below.

Cams

Choose desired cam. Note selection and position of contact block(s).

‡Cam Code				Quick-Connect			
				Screw Terminal Contact Block		Terminal Contact Block	
				Position 1	Position 2	Position 1	Position 2
D	O	—	X	—	P9B10VN	—	P9B10FN
	X	—	O	P9B01VN	—	P9B01FN	—
	O	—	X	P9B11VN	—	—	—
	X	—	O	—	—	—	—
I	—	O	X	—	P9B10VN	—	P9B10FN
	—	X	O	P9B01VN	—	P9B01FN	—
	—	O	X	P9B11VN	—	—	—
	—	X	O	—	—	—	—
H	X	O	—	—	P9B10VN	—	P9B10FN
	O	X	—	P9B01VN	—	P9B01FN	—
	X	O	—	P9B11VN	—	—	—
	O	X	—	—	—	—	—



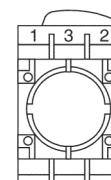
Operator Positions

Replace asterisk (*) in product number with color code from colors table below.

*Colors

Colors	Black	Red	Green	Yellow	Blue	No Knob ¹
*Color code	N	R	V	G	L	0

¹Subtract \$3.00 from List Price, GO-10GC, for selector switches ordered without knobs. Color knobs are listed separately on page 9-103.



Contact Block Positions (viewed from rear)

