

Terminal Blocks Panel or Mounting Track Terminal Boards CR151B

Panel or Mounting Track Terminal Boards

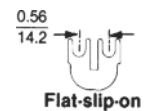
Termination Type	Terminal Cover	Points Per Board ¹	Product Number ²	List Price GO-10G5
Screw-Type Both Sides	None	4	CR151B4	\$4.80
Screw-Type Both Sides	None	6	CR151B6	\$7.20
Screw-Type Both Sides	None	12	CR151B2	\$12.90
Screw-Type Both Sides	None	13	CR151B213A	\$14.00
Screw-Type Both Sides	Clear Cover	4	CR151B41AF	\$5.60
Screw-Type Both Sides	Clear Cover	6	CR151B61AF	\$8.20
Screw-Type Both Sides	Clear Cover	12	CR151B21AF	\$14.10
Screw-Type One Side, Wire Clamp Other Side	None	4	CR151B45	\$6.30
Screw-Type One Side, Wire Clamp Other Side	None	6	CR151B65	\$8.10
Screw-Type One Side, Wire Clamp Other Side	None	12	CR151B25	\$15.00
Screw-Type One Side, Wire Clamp Other Side	Clear Cover	4	CR151B45AF	\$7.10
Screw-Type One Side, Wire Clamp Other Side	Clear Cover	6	CR151B65AF	\$9.10
Screw-Type One Side, Wire Clamp Other Side	Clear Cover	12	CR151B25AF	\$16.20
Screw With Wire Clamp Both Sides	None	4	CR151B46	\$7.20
Screw With Wire Clamp Both Sides	None	6	CR151B66	\$9.00
Screw With Wire Clamp Both Sides	None	12	CR151B26	\$16.80
Screw With Wire Clamp Both Sides	None	13	CR151B213B	\$19.00
Screw With Wire Clamp Both Sides	Clear Cover	4	CR151B46AF	\$8.00
Screw With Wire Clamp Both Sides	Clear Cover	6	CR151B66AF	\$10.00
Screw With Wire Clamp Both Sides	Clear Cover	12	CR151B26AF	\$18.00
Washer Head Screw Both Sides	None	4	CR151B40	\$5.40
Washer Head Screw Both Sides	None	6	CR151B60	\$7.80
Washer Head Screw Both Sides	None	12	CR151B20	\$14.10
Washer Head Screw Both Sides	Clear Cover	4	CR151B40AF	\$6.20
Washer Head Screw Both Sides	Clear Cover	6	CR151B60AF	\$8.80
Washer Head Screw Both Sides	Clear Cover	12	CR151B20AF	\$15.30

¹Where number of points desired is not listed use combination of boards.

²Product Number and price represent one piece. Sold only in packages of 10. Order in multiples of 10 pieces. Minimum order quantity is 10.

Accessories

Accessory Type	Description	Product Number	List Price GO-10G5
Jumper	For customer connection of adjacent screw-type terminal board	CR151X301 ³	\$0.55



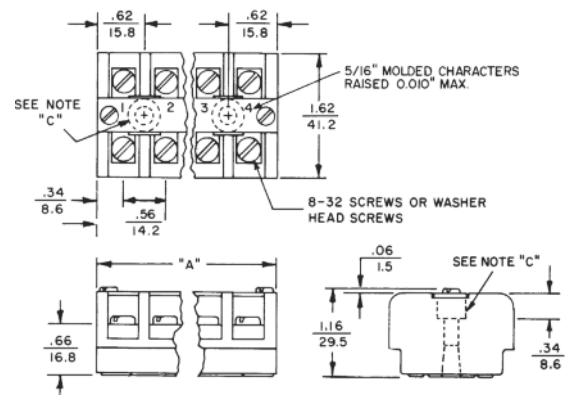
³Product Number and price represent one piece. Sold only in packages of 100. Order in multiples of 100 pieces. Minimum order quantity is 100.

CR151X301 Diagram

Outlines and Dimensions in. (mm) For Estimating Only

Panel or Mounting Track Terminal Boards

Points Per Board	Dimension A	Distance Between Mounting Hole Centers in (mm)	Package (10 units) Shipping Weight, Pounds
4	2.38 (60.4)	1.12 (28.5)	2
6	3.50 (88.9)	2.25 (57.2)	3
12	6.88 (174.8)	5.62 (142.8)	6
13	7.50 (190.5)	6.19 (157.2)	7



Note C: Terminal boards mount with two #8 screws. Mounting holes are located under Marking Strip.

