

# Molded Case Circuit Breakers

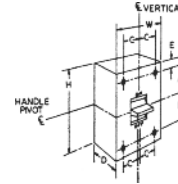
## Industrial Circuit Breakers

### Quick Reference Guide

#### 10-1200A Circuit Breakers

#### Thermal Magnetic Trip

Ratings do not apply to molded case switches. The interruption ratings and voltages shown in the table are maximum ratings. A circuit breaker of the type given in the left-hand column may be applied at the given circuit voltage in any electrical distribution system where the available fault current at the load terminals of the breaker does not exceed the value in the table. That circuit breaker type may also be applied at intermediate values of circuit voltage provided the available fault current at the load terminals of the breaker does not exceed the value in the table for the higher value of voltage.



TEYD, TEYH, TEYL

TEY and TEYF (UL File E-11592; Fixed Thermal Magnetic Trip Unit; CSA LR 57114)

Circuit Breaker Type	Ampere Rating	No. Poles	Maximum Voltage Rating		UL Listed Interrupting Rating—kA										Dimensions (in)						Approx. Ship Wt./Std. Pack	
					Vac					Vdc												
					ac	dc	120	120/240	240	277	480	600	125	250	500	600	H	W	D	A		B
TEY <sup>2,3</sup>	15-100	1	277	125	65	—	14	14	—	—	10	—	—	—	5 1/4	1	3 1/16	—	—	—	—	—
		2	480/277	250	—	—	65	14	14 <sup>6</sup>	—	—	10	—	—		2						
		3		—	—	—	—	—	—	—	—	—	—	3								
TEYF <sup>2,3</sup>	15-60	1	277	125	65	—	14	18	—	—	10	—	—	5 1/4	1	3 1/16	—	—	—	—	—	
	15-125	2	480/277	250	—	—	65	18	18 <sup>6</sup>	—	—	10	—		2							
		3		—	—	—	—	—	—	—	—	—	—		3							
TEYD	15-70	1	277	—	65	65	—	25	—	—	—	—	—	5 1/4	1	3 1/16	—	—	—	—	1 lb	
	15-125	2	480/277	—	—	65	65	—	25 <sup>6</sup>	—	—	—	—		2		2 lb					
		3		—	—	—	—	—	—	—	—	—	—		3		2.7 lb					
TEYH	15-70	1	277	—	65	65	—	35	—	—	—	—	—	5 1/4	1	3 1/16	—	—	—	—	1 lb	
	15-125	2	480/277	—	—	65	65	—	35 <sup>6</sup>	—	—	—	—		2		2 lb					
		3		—	—	—	—	—	—	—	—	—	—		3		2.7 lb					
TEYL	15-70	1	277	125	100	100	—	65	—	—	15	—	—	5 1/4	1	3 1/16	—	—	—	—	1 lb	
	15-125	2	480/277	250	—	100	100	—	65 <sup>6</sup>	—	42	20	—		2		2 lb					
		3		—	—	—	—	—	—	—	42	35	—		—		3	2.7 lb				

E150 (UL File E-11592; Fixed Thermal Magnetic Trip Unit; CSA LR 57114)

TEB <sup>2,3</sup>	10-100 <sup>4</sup>	1	120	125	10	—	—	—	—	—	5	—	—	6 5/16	1 3/8	3 3/8	2 41/64	2 15/64	—	23/32	26 lb/24				
		2	240	250	—	—	10	—	—	—	—	5	—		—				2 3/4		24 lb/12				
		3		—	—	—	10	—	—	—	—	—	—		—				4 1/8		28 lb/8				
TED <sup>2,3</sup>	10-100 <sup>4</sup>	1	277, 347 <sup>5</sup>	125	—	—	14	10	—	10	—	—	—	6 5/16	1 3/8	3 3/8	2 41/64	2 15/64	—	23/32	26 lb/24				
		2	480	250	—	—	18	—	18	—	—	10	—		—				2 3/4		24 lb/12				
	10-150 <sup>4</sup>	3	480, 600	500	—	—	—	—	—	14	—	—	10 <sup>1</sup>	—	4 1/8	—	11/16	—	—	28 lb/8					
THED <sup>2,3</sup>	15-30	1	277, 347 <sup>5</sup>	125	—	—	65	—	—	10 <sup>7</sup>	—	—	—	6 5/16	1 3/8	3 3/8	2 41/64	2 15/64	—	23/32	26 lb/24				
	15-100	2	480	250	—	—	65	—	—	—	10 <sup>7</sup>	—	—		4 1/8				—		—	—	—	24 lb/12	
	15-100	3	600	500	—	—	65	—	25	18	—	—	10 <sup>1</sup>		—				—		—	—	11/16	—	28 lb/8
	110-150	—	—	—	—	—	—	—	—	—	—	—	—		—				—		—	—	—	—	—

<sup>1</sup>UL listed with poles in series for 500 Vdc ungrounded battery applications.

<sup>2</sup>UL listed as HACR (heating, air conditioning, and refrigeration).

<sup>3</sup>15-50A UL listed as HID (high intensity discharge).

<sup>4</sup>10 amp not UL listed, rated 5kA @ 120V, 240V and 480V

<sup>5</sup>UL listed/CSA Certified for 10kA @ 347 Vac (TED) and 18kA @ 347V (THED). Also rated 10kA @ 480V but not UL listed.

<sup>6</sup>480Y/277 Vac.

<sup>7</sup>UL listed 10kA, GE tested to 20kA.

<sup>8</sup>No longer available

<sup>9</sup>Not CSA listed



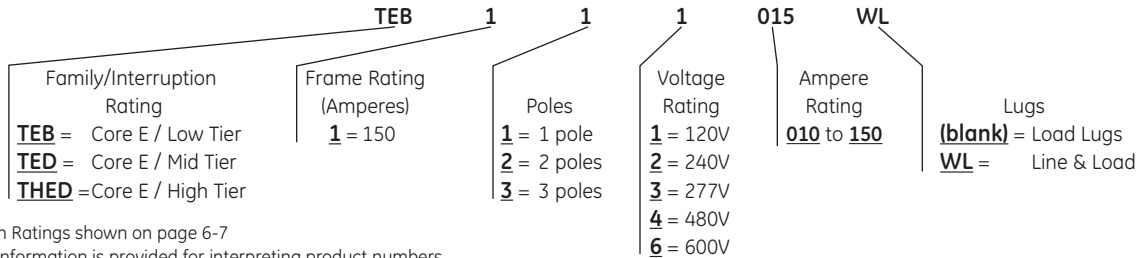
# Molded Case Circuit Breakers

## Industrial Circuit Breakers

10-150A Circuit Breakers  
 Thermal-Magnetic Trip  
 E150 Line Circuit Breakers  
 Types TEB, TED, THED  
 Noninterchangeable Trip



### Product Number Structure



Interruption Ratings shown on page 6-7  
 Note: This information is provided for interpreting product numbers  
 (it should not be used to build product numbers).

### Single Pole — Includes Cu/Al load lugs only. If line lugs are required, add suffix "WL" to Product Number.

Ampere Rating	Type TEB		Type TED		Type THED	
	120 Vac 125 Vdc	Product Number	277 Vac 125 Vdc	347 Vac <sup>1</sup>	277 Vac	347 Vac <sup>1</sup>
10	TEB111010 <sup>2,4</sup>	TEB111010 <sup>2,4</sup>	TED113010 <sup>2,4</sup>	TED113010 <sup>2,4</sup>	THED113015 <sup>4</sup>	THED114015 <sup>3,4</sup>
15	TEB111015 <sup>3,4</sup>	TEB111015 <sup>3,4</sup>	TED113015 <sup>3,4</sup>	TED113015 <sup>3,4</sup>	THED113020 <sup>4</sup>	THED114020 <sup>3,4</sup>
20	TEB111020 <sup>3,4</sup>	TEB111020 <sup>3,4</sup>	TED113020 <sup>3,4</sup>	TED113020 <sup>3,4</sup>	THED113025 <sup>4</sup>	THED114025 <sup>4</sup>
25	TEB111025 <sup>4</sup>	TEB111025 <sup>4</sup>	TED113025 <sup>4</sup>	TED113025 <sup>4</sup>	THED113030 <sup>4</sup>	THED114030 <sup>4</sup>
30	TEB111030 <sup>4</sup>	TEB111030 <sup>4</sup>	TED113030 <sup>4</sup>	TED113030 <sup>4</sup>	—	—
35	TEB111035 <sup>4</sup>	TEB111035 <sup>4</sup>	TED113035 <sup>4</sup>	TED113035 <sup>4</sup>	—	—
40	TEB111040 <sup>4</sup>	TEB111040 <sup>4</sup>	TED113040 <sup>4</sup>	TED113040 <sup>4</sup>	—	—
45	TEB111045 <sup>4</sup>	TEB111045 <sup>4</sup>	TED113045 <sup>4</sup>	TED113045 <sup>4</sup>	—	—
50	TEB111050 <sup>4</sup>	TEB111050 <sup>4</sup>	TED113050 <sup>4</sup>	TED113050 <sup>4</sup>	—	—
60	TEB111060	TEB111060	TED113060	TED113060	—	—
70	TEB111070	TEB111070	TED113070	TED113070	—	—
80	TEB111080	TEB111080	TED113080	TED113080	—	—
90	TEB111090	TEB111090	TED113090	TED113090	—	—
100	TEB111100	TEB111100	TED113100	TED113100	—	—

### Two Pole — Includes Cu/Al line and load lugs. For optional lugs, see page 6-106 and 6-108.

Ampere Rating	Type TEB		Type TED		Type THED, Hi-Break <sup>5</sup>	
	240 Vac, 250 Vdc	Product Number	480 Vac, 250 Vdc	Product Number	480 Vac, 250 Vdc	Product Number
10	TEB122010WL <sup>2,4</sup>	TEB122010WL <sup>2,4</sup>	TED124010WL <sup>2,4</sup>	TED124010WL <sup>2,4</sup>	THED124015WL <sup>4</sup>	THED124015WL <sup>4</sup>
15	TEB122015WL <sup>4</sup>	TEB122015WL <sup>4</sup>	TED124015WL <sup>4</sup>	TED124015WL <sup>4</sup>	THED124020WL <sup>4</sup>	THED124020WL <sup>4</sup>
20	TEB122020WL <sup>4</sup>	TEB122020WL <sup>4</sup>	TED124020WL <sup>4</sup>	TED124020WL <sup>4</sup>	THED124025WL <sup>4</sup>	THED124025WL <sup>4</sup>
25	TEB122025WL <sup>4</sup>	TEB122025WL <sup>4</sup>	TED124025WL <sup>4</sup>	TED124025WL <sup>4</sup>	THED124030WL <sup>4</sup>	THED124030WL <sup>4</sup>
30	TEB122030WL <sup>4</sup>	TEB122030WL <sup>4</sup>	TED124030WL <sup>4</sup>	TED124030WL <sup>4</sup>	THED124035WL <sup>4</sup>	THED124035WL <sup>4</sup>
35	TEB122035WL <sup>4</sup>	TEB122035WL <sup>4</sup>	TED124035WL <sup>4</sup>	TED124035WL <sup>4</sup>	THED124040WL <sup>4</sup>	THED124040WL <sup>4</sup>
40	TEB122040WL <sup>4</sup>	TEB122040WL <sup>4</sup>	TED124040WL <sup>4</sup>	TED124040WL <sup>4</sup>	THED124045WL <sup>4</sup>	THED124045WL <sup>4</sup>
45	TEB122045WL <sup>4</sup>	TEB122045WL <sup>4</sup>	TED124045WL <sup>4</sup>	TED124045WL <sup>4</sup>	THED124050WL <sup>4</sup>	THED124050WL <sup>4</sup>
50	TEB122050WL <sup>4</sup>	TEB122050WL <sup>4</sup>	TED124050WL <sup>4</sup>	TED124050WL <sup>4</sup>	THED124060WL	THED124060WL
60	TEB122060WL	TEB122060WL	TED124060WL	TED124060WL	THED124070WL	THED124070WL
70	TEB122070WL	TEB122070WL	TED124070WL	TED124070WL	THED124080WL	THED124080WL
80	TEB122080WL	TEB122080WL	TED124080WL	TED124080WL	THED124090WL	THED124090WL
90	TEB122090WL	TEB122090WL	TED124090WL	TED124090WL	THED124100WL	THED124100WL
100	TEB122100WL	TEB122100WL	TED124100WL	TED124100WL	—	—
110	—	—	TED124110WL	TED124110WL	—	—
125	—	—	TED124125WL	TED124125WL	—	—
150	—	—	TED124150WL	TED124150WL	—	—

<sup>1</sup>Suitable for 10 kAIC at 480 Vac, but not labeled or UL listed.

<sup>2</sup>Not UL listed, rated 5kA @ 120V, 240V and 480V.

<sup>3</sup>Single-pole, 15- and 20-ampere breakers are also UL listed as switching duty breakers, suitable for switching 120 Vac (TEB), 277, 347 Vac (TED, THED) fluorescent lighting loads.

<sup>4</sup>UL listed for HID (high intensity discharge).

<sup>5</sup>Two-pole breaker is furnished in three-pole case.

Notes: All TEB, TED, THED breakers UL listed as HACR type except 10 ampere.

All TEB, TED, THED breakers suitable for reverse feed.

60/75°C rating through 100 amperes, 75°C rating above 100 amperes.

