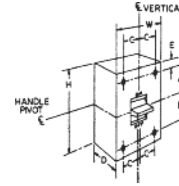


Molded Case Circuit Breakers Industrial Circuit Breakers

Section 6

Quick Reference Guide
10-1200A Circuit Breakers
Thermal Magnetic Trip

Ratings do not apply to molded case switches. The interruption ratings and voltages shown in the table are maximum ratings. A circuit breaker of the type given in the left-hand column may be applied at the given circuit voltage in any electrical distribution system where the available fault current at the load terminals of the breaker does not exceed the value in the table. That circuit breaker type may also be applied at intermediate values of circuit voltage provided the available fault current at the load terminals of the breaker does not exceed the value in the table for the higher value of voltage.



TEYD, TEYH, TEYL

TEY and TEYF (UL File E-11592; Fixed Thermal Magnetic Trip Unit; CSA LR 57114)

Circuit Breaker Type	Ampere Rating	No. Poles	Maximum Voltage Rating		UL Listed Interrupting Rating—kA										Dimensions (in)						Approx. Ship Wt./Std. Pack	
					Vac					Vdc												
					ac	dc	120	120/240	240	277	480	600	125	250	500	600	H	W	D	A		B
TEY ^{2,3}	15-100	1	277	125	65	—	14	14	—	—	10	—	—	—	5 1/4	1	3 1/16	—	—	—	—	—
		2	480/277	250	—	—	—	—	—	—	—	—	—	—		2						
		3		—	—	—	—	—	—	—	—	—	—	3								
TEYF ^{2,3}	15-60	1	277	125	65	—	14	18	—	—	10	—	—	5 1/4	1	3 1/16	—	—	—	—	—	
	15-125	2	480/277	250	—	—	65	18	18 ⁶	—	—	10	—		—		2					
		3		—	—	—	—	—	—	—	—	—	—		—		3					
TEYD	15-70	1	277	—	65	65	—	25	—	—	—	—	—	5 1/4	1	3 1/16	—	—	—	—	1 lb	
	15-125	2	480/277	—	—	65	65	—	25 ⁶	—	—	—	—		2		2 lb					
		3		—	—	—	—	—	—	—	—	—	—		3		2.7 lb					
TEYH	15-70	1	277	—	65	65	—	35	—	—	—	—	—	5 1/4	1	3 1/16	—	—	—	—	1 lb	
	15-125	2	480/277	—	—	65	65	—	35 ⁶	—	—	—	—		2		2 lb					
		3		—	—	—	—	—	—	—	—	—	—		3		2.7 lb					
TEYL	15-70	1	277	125	100	100	—	65	—	—	15	—	—	5 1/4	1	3 1/16	—	—	—	—	1 lb	
	15-125	2	480/277	250	—	100	100	—	65 ⁶	—	42	20	—		—		2	2 lb				
		3		—	—	—	—	—	—	—	—	42	35		—		—	3	2.7 lb			

E150 (UL File E-11592; Fixed Thermal Magnetic Trip Unit; CSA LR 57114)

TEB ^{2,3}	10-100 ⁴	1	120	125	10	—	—	—	—	—	5	—	—	6 5/16	1 3/8	3 3/8	2 41/64	2 15/64	—	23/32	26 lb/24
		2	240	250	—	—	10	—	—	—	—	5	—		—				2 3/4		24 lb/12
		3		—	—	—	10	—	—	—	—	—	—		4 1/8				28 lb/8		
TED ^{2,3}	10-100 ⁴	1	277, 347 ⁵	125	—	—	14	10	—	10	—	—	—	6 5/16	1 3/8	3 3/8	2 41/64	2 15/64	—	23/32	26 lb/24
		2	480	250	—	—	18	—	18	—	—	10	—		—				2 3/4		24 lb/12
	10-150 ⁴	3	480, 600	500	—	—	—	—	—	14	—	—	10 ¹	—	4 1/8	—	11/16	28 lb/8			
THED ^{2,3}	15-30	1	277, 347 ⁵	125	—	—	65	—	—	10 ⁷	—	—	—	6 5/16	1 3/8	3 3/8	2 41/64	2 15/64	—	23/32	26 lb/24
	15-100	2	480	250	—	—	65	—	—	—	10 ⁷	—	—		4 1/8				24 lb/12		
	15-100	3	600	500	—	—	65	—	25	18	—	—	10 ¹		—				11/16		28 lb/8
	110-150	—	—	—	—	—	42	—	—	—	—	—	—		—				—		—

¹UL listed with poles in series for 500 Vdc ungrounded battery applications.

²UL listed as HACR (heating, air conditioning, and refrigeration).

³15-50A UL listed as HID (high intensity discharge).

⁴10 amp not UL listed, rated 5kA @ 120V, 240V and 480V

⁵UL listed/CSA Certified for 10kA @ 347 Vac (TED) and 18kA @ 347V (THED). Also rated 10kA @ 480V but not UL listed.

⁶480Y/277 Vac.

⁷UL listed 10kA, GE tested to 20kA.

⁸No longer available

⁹Not CSA listed



Molded Case Circuit Breakers

Industrial Circuit Breakers

Section 6

10-150A Circuit Breakers
 Thermal-Magnetic Trip
 E150 Line Circuit Breakers
 Types TEB, TED, THED
 Noninterchangeable Trip

Three Pole — Includes Cu/Al line and load lugs. For optional lugs, see page 6-106 and 6-108.

Ampere Rating	Type TEB	Type TED		Type THED, Hi-Break
	240 Vac	480 Vac	600 Vac	600 Vac
	Product Number	Product Number	Product Number	Product Number
10	TEB132010WL ^{1,3}	TED134010WL ^{1,3}	—	—
15	TEB132015WL ³	TED134015WL ³	—	—
20	TEB132020WL ³	TED134020WL ³	TED136020WL ³	THED136020WL ³
25	TEB132025WL ³	TED134025WL ³	TED136025WL ³	THED136025WL ³
30	TEB132030WL ³	TED134030WL ³	TED136030WL ³	THED136030WL ³
35	TEB132035WL ³	TED134035WL ³	TED136035WL ³	THED136035WL ³
40	TEB132040WL ³	TED134040WL ³	TED136040WL ³	THED136040WL ³
45	TEB132045WL ³	TED134045WL ³	TED136045WL ³	THED136045WL ³
50	TEB132050WL ³	TED134050WL ³	TED136050WL ³	THED136050WL ³
60	TEB132060WL	TED134060WL	TED136060WL	—
70	TEB132070WL	TED134070WL	TED136070WL	THED136070WL
80	TEB132080WL	TED134080WL	TED136080WL	—
90	TEB132090WL	TED134090WL	TED136090WL	THED136090WL
100	TEB132100WL	TED134100WL	TED136100WL	THED136100WL
110	—	TED134110WL	TED136110WL	THED136110WL
125	—	TED134125WL	TED136125WL	THED136125WL
150	—	TED134150WL	TED136150WL	THED136150WL
100NA	—	TED134YT100 ²	TED136YT100 ²	—
150NA	—	TED134YT150 ²	TED136YT150 ²	—

¹Not UL listed, rated 5kA @ 120V, 240V and 480V.

²Includes factory-installed dummy trip.

³UL listed for HID (high intensity discharge).

Notes: All TEB, TED, THED breakers UL listed as HACR type except 10 ampere.
 All TEB, TED, THED breakers suitable for reverse feed.
 60/75°C rating through 100 amperes, 75°C rating above 100 amperes.

Accessories: See pages 6-39 to 6-44 and 6-97 to 6-109.

Add-on Current Limiter — UL Listed 100 kAIC at 480 and 600 VAC⁴

Ampere Rating	Product Number
15	TEDL36015
20	TEDL36020
30 and 60	TEDL36060
100	TEDL36100

⁴For use with 3 Pole TED/THED only

E150 Reference Publications

TDR Operating Mechanism	GEH-2994
Shunt Trip	GEH-3416
Undervoltage Release	GEH-3417
Auxiliary Switch	GEH-3418
Three Coil Shunt Trip	GEH-3434
Mechanical Interlock	GEH-4310
TDM Operating Mechanism	GEH-4335
Bell Alarm	GEH-4576
Plug-in Mounting Base	GEH-4610
STDA Flange Handle	GEH-5314
STDA Operating Mechanism	GEH-5684
Cable Operator Mechanism	GEH-6290
Motor Operator	GEH-6500
Back Connected Studs	GEJ-3609
Padlocking Device - Standard	GEJ-5143
E150 Outline Drawing	139C3643SH1, 2, 4

