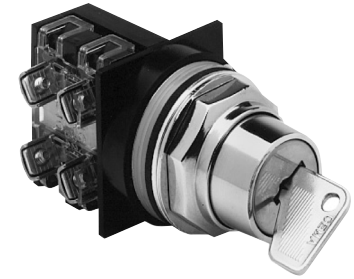


# Pilot and Signaling Devices

## Heavy-Duty 30.5 mm Watertight/Oiltight Selector Switches

### CR104P

Key Operated  
 Non-Illuminated  
 600 Volts Max. AC/DC  
 10 Amperes Continuous



Key Selector Switch

**Units are supplied factory-assembled when ordered with contact blocks.**

Product Number and price do not include nameplate. All nameplates must be ordered as a separate item. Two keys included with each cylinder lock.

Suitable for use in NEMA Type 1, 3, 3R, 4, 4X, 12, and 13 applications, when mounted in enclosures rated for those same applications. For some NEMA Type 4X applications, protective caps will improve corrosion resistance.

### 2-Position - Key Operated

Release Type	2 Position Cam Code	Contact Configuration	Key Removal	Product Number	List Price GO-10P1
Maintained	1	None	Left	CR104PSK21A00L	\$58.20
Maintained	1	None	Right	CR104PSK21A00R	\$58.20
Maintained	1	None	Left and Right	CR104PSK21A00M	\$58.20
Maintained	1	1NO-1NC	Left	CR104PSK21A91L	\$76.20
Maintained	1	1NO-1NC	Right	CR104PSK21A91R	\$76.20
Maintained	1	1NO-1NC	Left and Right	CR104PSK21A91M	\$76.20
Maintained	1	1NO-1NC	Left	CR104PSK21A91L51 <sup>1</sup>	\$88.20
Maintained	1	1NO-1NC	Right	CR104PSK21A91R51 <sup>1</sup>	\$88.20
Maintained	1	1NO-1NC	Left and Right	CR104PSK21A91M51 <sup>1</sup>	\$88.20
Maintained	1	2NO-2NC	Left	CR104PSK21A92L	\$94.20
Maintained	1	2NO-2NC	Right	CR104PSK21A92R	\$94.20
Maintained	1	2NO-2NC	Left and Right	CR104PSK21A92M	\$94.20
Spring Return L → C	2	None	Center	CR104PSK12A00C	\$70.20
Spring Return L → C	2	1NO-1NC	Center	CR104PSK12A91C	\$88.20
Spring Return L → C	2	1NO-1NC	Center	CR104PSK12A91C51 <sup>1</sup>	\$100.20
Spring Return L → C	2	2NO-2NC	Center	CR104PSK12A92C	\$106.20
Spring Return R → C	3	None	Center	CR104PSK63A00C	\$70.20
Spring Return R → C	3	1NO-1NC	Center	CR104PSK63A91C	\$88.20
Spring Return R → C	3	1NO-1NC	Center	CR104PSK63A91C51 <sup>1</sup>	\$100.20
Spring Return R → C	3	2NO-2NC	Center	CR104PSK63A92C	\$106.20

<sup>1</sup>CH501 keyed cylinder lock. Other listed cylinder locks are alike and use identical keys. Dissimilar locks are also available; contact nearest GE Energy Representative.

### 2-Position Selector Switches - Key Operated

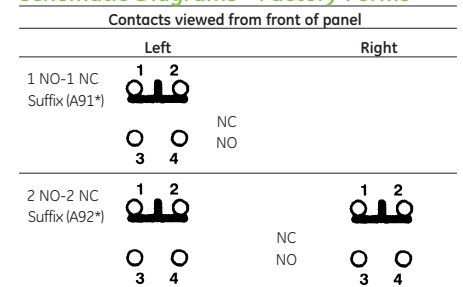
Operator Position	Contact State	Cam #1		Cam #2		Cam #3	
		Type of Contact Block	Mounting Location Left/Right	Type of Contact Block	Mounting Location Left/Right	Type of Contact Block	Mounting Location Left/Right
O - X		NO	L or R	-		-	
X - O		NC	L or R	-		-	
X O -		-		NO	L or R	-	
O X -		-		NC	L or R	-	
- O X		-		-		NO	L or R
- X O		-		-		NC	L or R

- : This position is nonexistent or is a "pass through".

In the product number of a selector switch, the cam is identified by the fifth figure after the "104".

**Example:** CR104PSG2 1 B, the cam number is 1.

### Schematic Diagrams - Factory Forms



Numbers and letters are molded into blocks at terminals.  
 \*Key removal code.

