

# NEMA Full Voltage Power Devices NEMA Rated Full Voltage Starters - Manual

## Section 1

### CR1062

Single-Phase and Polyphase

10 HP Maximum

600 Volts

25 to 60 Hertz

#### Application

Designed for controlling small ac motors. Standard CR1062R and S starter forms provide overload protection but cannot be used where undervoltage protection is required or for remote or automatic operation.

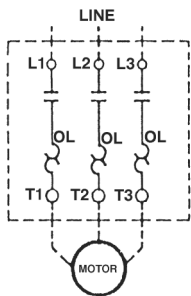
#### Features

- Front-connected; clamp-type terminals for easy wiring.
- Trip-free overload mechanism; can't be held closed.
- Knockout in enclosure cover permits installation of indicating light kit.

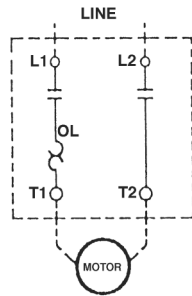
#### Product Number Selection Instructions

1. Devices may be ordered under the new easy-to-use product numbering system outlined on page 1-171. Customers may still use the original product numbering system for devices listed on page 1-172.
2. Select overload relay heaters from tables on page 1-174. Three heaters should be specified and ordered as separate items. **List Price \$9.00 each, GO-10H.** Packaged in quantities of three; must be ordered in multiples of three. Minimum order quantity is three. Single-phase forms require one heater, four-pole forms require two heaters and three-pole forms require three heaters.

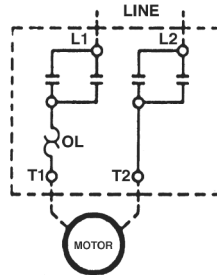
#### Schematic Diagrams



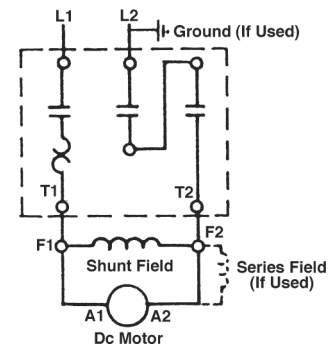
Typical 3-Phase  
Connections CR1062R & S



Typical Single-Phase  
Connections CR1062R & S



Typical Single-Phase  
Connections CR1062T



Typical Connections  
for DC Starters

#### Horsepower Ratings

		Maximum Horsepower Ratings					
		Coil Motor Voltage and Frequency					
Phase	NEMA Size	60 Hertz			50 Hertz		
		115 V	200-208 V	230-240 V	277 V	460-600 V	380 V
Single	M-0	1	—	2	2	—	—
	M-1	2	—	3	2	—	—
	M-1P	3	—	5	2	—	—
Three	M-0	—	3	3	—	5	5
	M-1	—	7-1/2	7-1/2	—	10	10

#### Reference Publications

Instructions GEH-4737



Product Number Selection Instructions: See page 1-170