

# Pilot and Signaling Devices

## Heavy-Duty 30.5 mm Watertight/Oiltight Accessories

### CR104P

Contact Blocks  
600 Volts max. AC/DC  
10 Amperes Continuous

Suitable for use in NEMA Types 1, 3, 3R, 4, 4X, 12, and 13 applications when mounted in enclosures rated for those same applications. For some NEMA Type 4X applications, protective caps will improve corrosion resistance.

#### Standard

Contact Configuration	Operating Plunger Color	Protection	Product Number	List Price GO-10P1
1NO-1NC	White	IP10 Back-of-Hand	CR104PXC91	\$18.00
1NO	Green	IP10 Back-of-Hand	CR104PXC1	\$9.00
1NC	Red	IP10 Back-of-Hand	CR104PXC01	\$9.00
1NO (early close)	White	IP10 Back-of-Hand	CR104PXC10E <sup>1</sup>	\$9.00
1NC (late open)	White	IP10 Back-of-Hand	CR104PXC01L <sup>1</sup>	\$9.00
1NO	Green	IP20 Finger	CR104PXC1F	\$12.00
1NC	Red	IP20 Finger	CR104PXC01F	\$12.00
1NO (early close)	White	IP20 Finger	CR104PXC10EF	\$12.00
1NC (late open)	White	IP20 Finger	CR104PXC01LF	\$12.00

<sup>1</sup>Overlapping contacts can be achieved by combining CR104PXC10E, EF and CR104PXC01L, LF.

#### Gold Flashed

Contact Configuration	Operating Plunger Color	Protection	Product Number	List Price GO-10P1
1NO-1NC	White	IP10 Back-of-Hand	CR104PXC91G	\$36.00
1NO	Green	IP10 Back-of-Hand	CR104PXC10G	\$18.00
1NC	Red	IP10 Back-of-Hand	CR104PXC01G	\$18.00
1NO (early close)	White	IP10 Back-of-Hand	CR104PXC10EG <sup>2</sup>	\$18.00
1NC (late open)	White	IP10 Back-of-Hand	CR104PXC01LG <sup>2</sup>	\$18.00
1NO	Green	IP20 Finger	CR104PXC10GF	\$21.00
1NC	Red	IP20 Finger	CR104PXC01GF	\$21.00
1NO (early close)	White	IP20 Finger	CR104PXC10EGF <sup>2</sup>	\$21.00
1NC (late open)	White	IP20 Finger	CR104PXC01LGF <sup>2</sup>	\$21.00

<sup>2</sup>Overlapping contacts can be achieved by combining CR104PXC10EG, EGF and CR104PXC01LG, LGF.

#### Reed Switch

Contact Configuration	Product Number <sup>3</sup>	List Price GO-10P1
1NO	CR104PXC10R	\$18.00
1NC	CR104PXC01R	\$18.00

<sup>3</sup>Sold as components only. Suitable for Class I, Group A,B,C and D, Div. 2, Class II Hazardous Locations; Groups F and G Hazardous Locations when installed in a NEMA Type 4 or 12 enclosure.

#### IP10 Guards For Contact Blocks

For Use With	Product Number <sup>4</sup>	List Price GO-10P1
1NO	CR104PXG117	\$0.50
1NC	CR104PXG118	\$0.50
1NO-1NC	CR104PXG119	\$0.75

<sup>4</sup>Minimum order quantity is 10; package quantity is 10; multiple quantities is 10.

#### IP20 Guards For Contact Blocks

For Use With	Product Number	List Price GO-10P1
1NO	CR104PXG17	\$3.00
1NC	CR104PXG18	\$3.00
1NO-1NC	CR104PXG19	\$6.00

#### Contact Ratings: Standard Blocks-AC Ratings, NEMA A600 Heavy Pilot Duty

Maximum Voltage	Continuous Current Amperes	AC Make Voltamperes @ 60/50 Hz <sup>1</sup>	AC Break Voltamperes @ 60/50 Hz <sup>5</sup>
600 VAC/DC	10	7200	720

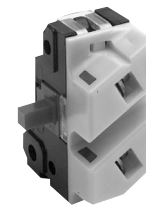
<sup>5</sup>Maximum make and break currents are 60 and 6 amperes respectively for voltages of 120 and below.

#### Contact Ratings: Standard Blocks-DC Ratings, NEMA P600 Heavy Pilot Duty

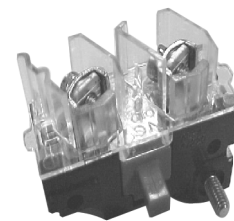
Maximum Make or Break Amperes @ 125 VDC	Maximum Make or Break Amperes @ 250 VDC	Maximum Make Or Break Amperes @ 600 VDC
1.1	0.55	0.2

#### Contact Ratings: Reed Switch Blocks

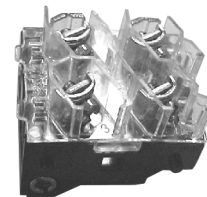
AC Operating Voltage	AC Maximum Continuous Current	AC Resistive VA	DC Operating Voltage	DC Maximum Continuous Current	DC Resistive Watts
2-120 VAC	.001-.15A	8 VA maximum	2-30 VDC	.001-.15A	4.5 Watts maximum



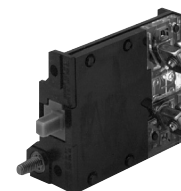
Single-Circuit with Finger-Safe Terminals



Single Circuit Contact Block



Double Circuit Contact Block



Reed Switch Contact Block



Nameplates: See pages 9-40 to 9-41  
Technical Data: See pages 9-56 to 9-57  
Product Number Selection Instructions: See pages 9-2