

Molded Case Circuit Breakers

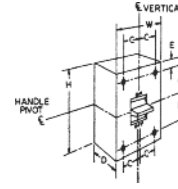
Industrial Circuit Breakers

Quick Reference Guide

10-1200A Circuit Breakers

Thermal Magnetic Trip

Ratings do not apply to molded case switches. The interruption ratings and voltages shown in the table are maximum ratings. A circuit breaker of the type given in the left-hand column may be applied at the given circuit voltage in any electrical distribution system where the available fault current at the load terminals of the breaker does not exceed the value in the table. That circuit breaker type may also be applied at intermediate values of circuit voltage provided the available fault current at the load terminals of the breaker does not exceed the value in the table for the higher value of voltage.



TEYD, TEYH, TEYL

TEY and TEYF (UL File E-11592; Fixed Thermal Magnetic Trip Unit; CSA LR 57114)

Circuit Breaker Type	Ampere Rating	No. Poles	Maximum Voltage Rating		UL Listed Interrupting Rating—kA										Dimensions (in)						Approx. Ship Wt./Std. Pack	
					Vac					Vdc					H	W	D	A	B	C		E
					ac	dc	120	120/240	240	277	480	600	125	250								
TEY ^{2,3}	15-100	1	277	125	65		14	14	—	—	10	—	—	—	5 1/4	1	3 1/16	—	—	—	—	—
		2	480/277	250	—	—	65	14	14 ⁶	—	—	10	—	—		2						
		3		—	—	—	—	—	—	—	—	—	—	3								
TEYF ^{2,3}	15-60	1	277	125	65		14	18	—	—	10	—	—	5 1/4	1	3 1/16	—	—	—	—	—	
	15-125	2	480/277	250	—	—	65	18	18 ⁶	—	—	10	—		2							
		3		—	—	—	—	—	—	—	—	—	—		3							
TEYD	15-70	1	277	—	65	65	—	25	—	—	—	—	—	5 1/4	1	3 1/16	—	—	—	—	1 lb	
	15-125	2	480/277	—	—	65	65	—	25 ⁶	—	—	—	—		2		2 lb					
		3		—	—	—	—	—	—	—	—	—	—		3		2.7 lb					
TEYH	15-70	1	277	—	65	65	—	35	—	—	—	—	—	5 1/4	1	3 1/16	—	—	—	—	1 lb	
	15-125	2	480/277	—	—	65	65	—	35 ⁶	—	—	—	—		2		2 lb					
		3		—	—	—	—	—	—	—	—	—	—		3		2.7 lb					
TEYL	15-70	1	277	125	100	100	—	65	—	—	15	—	—	5 1/4	1	3 1/16	—	—	—	—	1 lb	
	15-125	2	480/277	250	—	100	100	—	65 ⁶	—	42	20	—		2		2 lb					
		3		—	—	—	—	—	—	—	42	35	—		—		3	2.7 lb				

E150 (UL File E-11592; Fixed Thermal Magnetic Trip Unit; CSA LR 57114)

TEB ^{2,3}	10-100 ⁴	1	120	125	10	—	—	—	—	—	5	—	—	6 5/16	1 3/8	3 3/8	2 41/64	2 15/64	—	23/32	26 lb/24				
		2	240	250	—	—	10	—	—	—	—	5	—		—				2 3/4		24 lb/12				
		3		—	—	—	10	—	—	—	—	—	—		—				4 1/8		28 lb/8				
TED ^{2,3}	10-100 ⁴	1	277, 347 ⁵	125	—	—	14	10	—	10	—	—	—	6 5/16	1 3/8	3 3/8	2 41/64	2 15/64	—	23/32	26 lb/24				
		2	480	250	—	—	18	—	18	—	—	10	—		—				2 3/4		24 lb/12				
	10-150 ⁴	3	480, 600	500	—	—	—	—	—	14	—	—	10 ¹	—	4 1/8	—	11/16	—	—	28 lb/8					
THED ^{2,3}	15-30	1	277, 347 ⁵	125	—	—	65	—	—	10 ⁷	—	—	—	6 5/16	1 3/8	3 3/8	2 41/64	2 15/64	—	23/32	26 lb/24				
	15-100	2	480	250	—	—	65	—	—	—	10 ⁷	—	—		4 1/8				—		—	—	—	24 lb/12	
	15-100	3	600	500	—	—	65	—	25	18	—	—	10 ¹		—				—		—	—	11/16	—	28 lb/8
	110-150	—	—	—	—	—	—	—	—	—	—	—	—		—				—		—	—	—	—	—

¹UL listed with poles in series for 500 Vdc ungrounded battery applications.

²UL listed as HACR (heating, air conditioning, and refrigeration).

³15-50A UL listed as HID (high intensity discharge).

⁴10 amp not UL listed, rated 5kA @ 120V, 240V and 480V

⁵UL listed/CSA Certified for 10kA @ 347 Vac (TED) and 18kA @ 347V (THED). Also rated 10kA @ 480V but not UL listed.

⁶480Y/277 Vac.

⁷UL listed 10kA, GE tested to 20kA.

⁸No longer available

⁹Not CSA listed



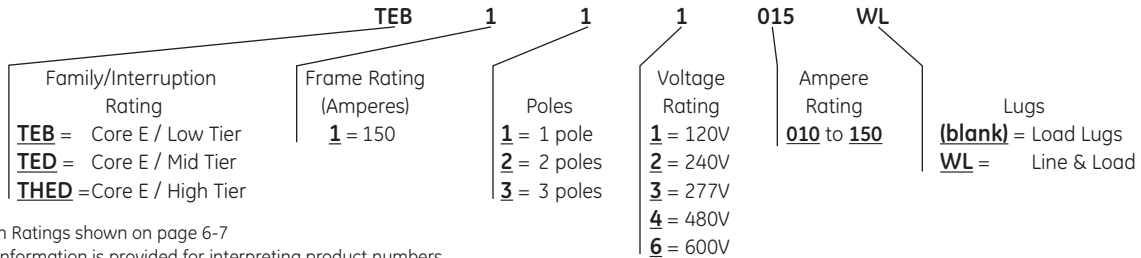
Molded Case Circuit Breakers

Industrial Circuit Breakers

10-150A Circuit Breakers
 Thermal-Magnetic Trip
 E150 Line Circuit Breakers
 Types TEB, TED, THED
 Noninterchangeable Trip



Product Number Structure



Interruption Ratings shown on page 6-7
 Note: This information is provided for interpreting product numbers
 (it should not be used to build product numbers).

Single Pole — Includes Cu/Al load lugs only. If line lugs are required, add suffix "WL" to Product Number.

Ampere Rating	Type TEB		Type TED		Type THED	
	120 Vac 125 Vdc	Product Number	277 Vac 125 Vdc	347 Vac ¹	277 Vac	347 Vac ¹
10	TEB111010 ^{2,4}	TEB111010 ^{2,4}	TED113010 ^{2,4}	TED113010 ^{2,4}	THED113015 ⁴	THED114015 ^{3,4}
15	TEB111015 ^{3,4}	TEB111015 ^{3,4}	TED113015 ^{3,4}	TED113015 ^{3,4}	THED113020 ⁴	THED114020 ^{3,4}
20	TEB111020 ^{3,4}	TEB111020 ^{3,4}	TED113020 ^{3,4}	TED113020 ^{3,4}	THED113025 ⁴	THED114025 ⁴
25	TEB111025 ⁴	TEB111025 ⁴	TED113025 ⁴	TED113025 ⁴	THED113030 ⁴	THED114030 ⁴
30	TEB111030 ⁴	TEB111030 ⁴	TED113030 ⁴	TED113030 ⁴	—	—
35	TEB111035 ⁴	TEB111035 ⁴	TED113035 ⁴	TED113035 ⁴	—	—
40	TEB111040 ⁴	TEB111040 ⁴	TED113040 ⁴	TED113040 ⁴	—	—
45	TEB111045 ⁴	TEB111045 ⁴	TED113045 ⁴	TED113045 ⁴	—	—
50	TEB111050 ⁴	TEB111050 ⁴	TED113050 ⁴	TED113050 ⁴	—	—
60	TEB111060	TEB111060	TED113060	TED113060	—	—
70	TEB111070	TEB111070	TED113070	TED113070	—	—
80	TEB111080	TEB111080	TED113080	TED113080	—	—
90	TEB111090	TEB111090	TED113090	TED113090	—	—
100	TEB111100	TEB111100	TED113100	TED113100	—	—

Two Pole — Includes Cu/Al line and load lugs. For optional lugs, see page 6-106 and 6-108.

Ampere Rating	Type TEB		Type TED		Type THED, Hi-Break ⁵	
	240 Vac, 250 Vdc	Product Number	480 Vac, 250 Vdc	Product Number	480 Vac, 250 Vdc	Product Number
10	TEB122010WL ^{2,4}	TEB122010WL ^{2,4}	TED124010WL ^{2,4}	TED124010WL ^{2,4}	THED124015WL ⁴	THED124015WL ⁴
15	TEB122015WL ⁴	TEB122015WL ⁴	TED124015WL ⁴	TED124015WL ⁴	THED124020WL ⁴	THED124020WL ⁴
20	TEB122020WL ⁴	TEB122020WL ⁴	TED124020WL ⁴	TED124020WL ⁴	THED124025WL ⁴	THED124025WL ⁴
25	TEB122025WL ⁴	TEB122025WL ⁴	TED124025WL ⁴	TED124025WL ⁴	THED124030WL ⁴	THED124030WL ⁴
30	TEB122030WL ⁴	TEB122030WL ⁴	TED124030WL ⁴	TED124030WL ⁴	THED124035WL ⁴	THED124035WL ⁴
35	TEB122035WL ⁴	TEB122035WL ⁴	TED124035WL ⁴	TED124035WL ⁴	THED124040WL ⁴	THED124040WL ⁴
40	TEB122040WL ⁴	TEB122040WL ⁴	TED124040WL ⁴	TED124040WL ⁴	THED124045WL ⁴	THED124045WL ⁴
45	TEB122045WL ⁴	TEB122045WL ⁴	TED124045WL ⁴	TED124045WL ⁴	THED124050WL ⁴	THED124050WL ⁴
50	TEB122050WL ⁴	TEB122050WL ⁴	TED124050WL ⁴	TED124050WL ⁴	THED124060WL	THED124060WL
60	TEB122060WL	TEB122060WL	TED124060WL	TED124060WL	THED124070WL	THED124070WL
70	TEB122070WL	TEB122070WL	TED124070WL	TED124070WL	THED124080WL	THED124080WL
80	TEB122080WL	TEB122080WL	TED124080WL	TED124080WL	THED124090WL	THED124090WL
90	TEB122090WL	TEB122090WL	TED124090WL	TED124090WL	THED124100WL	THED124100WL
100	TEB122100WL	TEB122100WL	TED124100WL	TED124100WL	—	—
110	—	—	TED124110WL	TED124110WL	—	—
125	—	—	TED124125WL	TED124125WL	—	—
150	—	—	TED124150WL	TED124150WL	—	—

¹Suitable for 10 kAIC at 480 Vac, but not labeled or UL listed.

²Not UL listed, rated 5kA @ 120V, 240V and 480V.

³Single-pole, 15- and 20-ampere breakers are also UL listed as switching duty breakers, suitable for switching 120 Vac (TEB), 277, 347 Vac (TED, THED) fluorescent lighting loads.

⁴UL listed for HID (high intensity discharge).

⁵Two-pole breaker is furnished in three-pole case.

Notes: All TEB, TED, THED breakers UL listed as HACR type except 10 ampere.

All TEB, TED, THED breakers suitable for reverse feed.

60/75°C rating through 100 amperes, 75°C rating above 100 amperes.



Molded Case Circuit Breakers

Industrial Circuit Breakers

Section 6

10-150A Circuit Breakers
 Thermal-Magnetic Trip
 E150 Line Circuit Breakers
 Types TEB, TED, THED
 Noninterchangeable Trip

Three Pole — Includes Cu/Al line and load lugs. For optional lugs, see page 6-106 and 6-108.

Ampere Rating	Type TEB	Type TED		Type THED, Hi-Break
	240 Vac	480 Vac	600 Vac	600 Vac
	Product Number	Product Number	Product Number	Product Number
10	TEB132010WL ^{1,3}	TED134010WL ^{1,3}	—	—
15	TEB132015WL ³	TED134015WL ³	—	—
20	TEB132020WL ³	TED134020WL ³	TED136020WL ³	THED136020WL ³
25	TEB132025WL ³	TED134025WL ³	TED136025WL ³	THED136025WL ³
30	TEB132030WL ³	TED134030WL ³	TED136030WL ³	THED136030WL ³
35	TEB132035WL ³	TED134035WL ³	TED136035WL ³	THED136035WL ³
40	TEB132040WL ³	TED134040WL ³	TED136040WL ³	THED136040WL ³
45	TEB132045WL ³	TED134045WL ³	TED136045WL ³	THED136045WL ³
50	TEB132050WL ³	TED134050WL ³	TED136050WL ³	THED136050WL ³
60	TEB132060WL	TED134060WL	TED136060WL	—
70	TEB132070WL	TED134070WL	TED136070WL	THED136070WL
80	TEB132080WL	TED134080WL	TED136080WL	—
90	TEB132090WL	TED134090WL	TED136090WL	THED136090WL
100	TEB132100WL	TED134100WL	TED136100WL	THED136100WL
110	—	TED134110WL	TED136110WL	THED136110WL
125	—	TED134125WL	TED136125WL	THED136125WL
150	—	TED134150WL	TED136150WL	THED136150WL
100NA	—	TED134YT100 ²	TED136YT100 ²	—
150NA	—	TED134YT150 ²	TED136YT150 ²	—

¹Not UL listed, rated 5kA @ 120V, 240V and 480V.

²Includes factory-installed dummy trip.

³UL listed for HID (high intensity discharge).

Notes: All TEB, TED, THED breakers UL listed as HACR type except 10 ampere.
 All TEB, TED, THED breakers suitable for reverse feed.
 60/75°C rating through 100 amperes, 75°C rating above 100 amperes.

Accessories: See pages 6-39 to 6-44 and 6-97 to 6-109.

Add-on Current Limiter — UL Listed 100 kAIC at 480 and 600 VAC⁴

Ampere Rating	Product Number
15	TEDL36015
20	TEDL36020
30 and 60	TEDL36060
100	TEDL36100

⁴For use with 3 Pole TED/THED only

E150 Reference Publications

TDR Operating Mechanism	GEH-2994
Shunt Trip	GEH-3416
Undervoltage Release	GEH-3417
Auxiliary Switch	GEH-3418
Three Coil Shunt Trip	GEH-3434
Mechanical Interlock	GEH-4310
TDM Operating Mechanism	GEH-4335
Bell Alarm	GEH-4576
Plug-in Mounting Base	GEH-4610
STDA Flange Handle	GEH-5314
STDA Operating Mechanism	GEH-5684
Cable Operator Mechanism	GEH-6290
Motor Operator	GEH-6500
Back Connected Studs	GEJ-3609
Padlocking Device - Standard	GEJ-5143
E150 Outline Drawing	139C3643SH1, 2, 4

