

# Pilot and Signaling Devices

## Heavy-Duty 30.5 mm Watertight/Oiltight Push Buttons

### CR104P

Mushroom-Head  
 Non-Illuminated  
 600 Volts Maximum AC/DC  
 10 Amperes Continuous

One-step selection and pricing of common assembled forms.

Units are supplied factory-assembled when ordered with contact blocks, except 2 3/8" diameter mushroom-head, which is unattached.

Suitable for use in NEMA Type 1, 3, 3R, 4, 4X, 12, and 13 applications when mounted in enclosures rated for those same applications. For some NEMA Type 4X applications, protective caps will improve corrosion resistance.

#### 1 3/8" Diameter - Momentary Operator

Contact Configuration	Color	Product Number	List Price GO-10P1
None (Operator Only)	Black	CR104PBM00B5	\$34.20
None (Operator Only)	Red	CR104PBM00R5	\$34.20
None (Operator Only)	Other	CR104PBM00*5 <sup>1</sup>	\$28.20
1NO-1NC	Black	CR104PBM91B5	\$52.20
1NO-1NC	Red	CR104PBM91R5	\$52.20
1NO-1NC	Other	CR104PBM91*5 <sup>1</sup>	\$46.20
2NO-2NC	Black	CR104PBM92B5	\$70.20
2NO-2NC	Red	CR104PBM92R5	\$70.20
2NO-2NC	Other	CR104PBM92*5 <sup>1</sup>	\$64.20
1NO	Black	CR104PBM10B5	\$43.20
1NO	Red	CR104PBM10R5	\$43.20
1NO	Other	CR104PBM10*5 <sup>1</sup>	\$37.20
1NC	Black	CR104PBM01B5	\$43.20
1NC	Red	CR104PBM01R5	\$43.20
1NC	Other	CR104PBM01*5 <sup>1</sup>	\$37.20

#### 2 3/8" Diameter - Momentary Operator

Contact Configuration	Color	Product Number	List Price GO-10P1
None (Operator Only)	Black	CR104PBM00B6	\$34.20
None (Operator Only)	Red	CR104PBM00R6	\$34.20
None (Operator Only)	Other	CR104PBM00*6 <sup>1</sup>	\$28.20
1NO-1NC	Black	CR104PBM91B6	\$52.20
1NO-1NC	Red	CR104PBM91R6	\$52.20
1NO-1NC	Other	CR104PBM91*6 <sup>1</sup>	\$46.20
2NO-2NC	Black	CR104PBM92B6	\$70.20
2NO-2NC	Red	CR104PBM92R6	\$70.20
2NO-2NC	Other	CR104PBM92*6 <sup>1</sup>	\$64.20
1NO	Black	CR104PBM10B6	\$43.20
1NO	Red	CR104PBM10R6	\$43.20
1NO	Other	CR104PBM10*6 <sup>1</sup>	\$37.20
1NC	Black	CR104PBM01B6	\$43.20
1NC	Red	CR104PBM01R6	\$43.20
1NC	Other	CR104PBM01*6 <sup>1</sup>	\$37.20

#### 1 3/8" Diameter Push-to-latch, turn-to-release

Contact Configuration	Color	Product Number	List Price GO-10P1
None (Operator Only)	Red	CR104PTR20A0R	\$52.20
1NO-1NC	Red	CR104PTR20A0R91	\$70.20
2NO-2NC	Red	CR104PTR20A0R92	\$88.20
1NO	Red	CR104PTR20A0R1	\$61.20
1NC	Red	CR104PTR20A0R01	\$61.20

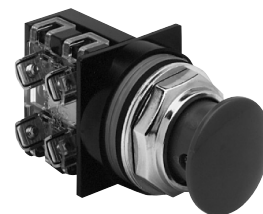
<sup>1</sup>To order assembled units with a different color, substitute the letter below in place of the \* in product number and add required adder to the list price.

#### Push-Pull Maintained Operator

Contact Configuration	Color	Operation	Product Number	List Price GO-10P1
1NO-1NC	Red	2 Position Maintained	CR104PBM01R5C	\$61.20
1NC-1NC late breaking	Red	3 Position, Momentary Push, Momentary Pull	CR104PBM0LR5D	\$61.20
1NC-1NC late breaking	Red	3 Position, Maintained Push, Momentary Pull	CR104PBM0LR5E	\$61.20

#### Cap Colors Available\*

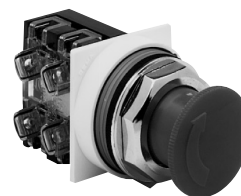
Color	Insert in place of asterisk (*)	List Price Adder, GO-10P1 Mushroom Heads
Yellow	E	\$6.00
Green	G	\$6.00
No Cap	A	\$0.00



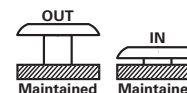
1 3/8" Mushroom Head



2 3/8" Mushroom Head

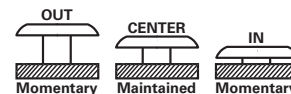


Push-to-Latch, Turn-to-Release



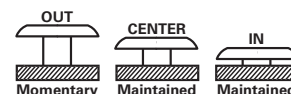
2 Position Maintained

NC X O  
 NO O X



Momentary Push - Momentary Pull

NC X X O  
 NC X O O



Maintained Push - Momentary Pull

NC X X O  
 NC X O O

