

Open Style PDBs 62000-69000

Versatile Power Distribution Blocks for cable terminations

Mersen Power Distribution Blocks afford a safe, convenient way of splicing cables, splitting primary power into a variety of secondary circuits or providing a fixed junction tap-off point. Power block options include single or dual primary connections with up to 30 secondary connections.

Features/Benefits:

- **Adder Poles**

All series have optional adder poles which snap onto the 1, 2 or 3- pole blocks and lock together to form as many poles as required. Adder poles with a variety of terminations can be combined to match special wire size combinations.

- **Wire Connectors**

Standard aluminum box connectors accommodate aluminum or copper wire, 1 conductor per opening. Standard copper box connections are for copper wire only, 1 conductor per opening. Connectors are all 1 piece and tin plated.

- **Insulators**

Insulators are virtually unbreakable, glass-filled polycarbonate on all series. "See-through" safety covers are available, which give greater safety and provide service entrance ratings for large and intermediate series blocks.

Highlights:

- **Mini** - 62000 and 63000 Series
- **Intermediate** - 66000 and 67000 Series
- **Large** - 68000 and 69000 Series

Applications:

- Box, stud and quick-connect terminations for copper and/or aluminum cables



Ratings:

Volts : 600V

Amps : 90 to 2660A

SCCR : 100kA with proper fuse.

Contact technical services for sizing table.

Approvals:

- Most sizes are UL Recognized Component -Guide XCFR2, File E73571
- Most sizes are CSA Certified:
 - Series 62, 63, 66, 68 - Class 6228, File 69363
 - Series 67, 69 - Class 3211, File 15469



Mini 62000-63000 Series

Catalog Numbers

Ampere rating based on NEC Table 310-16 for 75°C copper wire.

Primary		Secondary		Ampere Rating (A)		Aluminum				Copper				Short Circuit Current Rating
Wire Range AWG/kcmil or Stud Size	Openings or Studs per Pole	Wire Range AWG/kcmil or Stud Size	Openings or Studs per Pole	CSA	UL	Adder	1-Pole	2-Pole	3-Pole	Adder	1-Pole	2-Pole	3-Pole	
Box to Box														
#4-14	1	#4-14	4	90	85	63100	63101	63102	63103	62100	62101	62102	62103	100kA*
						63160	63161	63162	63163	62160	62161	62162	62163	100kA*
2/0-#14	1	2/0-#14	1	185	175	63150	63151	63152	63153	62150	62151	62152	62153	100kA*
		#2-14	2			63190	63191	63192	63193	62190	62191	62192	62193	100kA*
		#4-14	4			63130	63131	63132	63133	62130	62131	62132	62133	100kA*
Box to Stud														
2/0-#14	1	1/4-20 x 5/8	1	185	175	63140	63141	63142	63143	62140	62141	62142	62143	100kA*
		1/4-20 x 1/2 Tapped hole	1			-	-	-	-	62170	62171	62172	62173	100kA*
Stud to Stud														
1/4-20 x 5/8	1	1/4-20 x 5/8	1	240	240	-	-	-	-	62200	62201	62202	62203	100kA*
Box to Quick Connect														
#4-14	1	1/4 x .032QC	4	90	95	-	-	-	-	62210†	62211†	62212†	62213†	-

*Studs are furnished with nuts and washers. Recommended stud torque: (1/4-20) - 72 in. lbs.

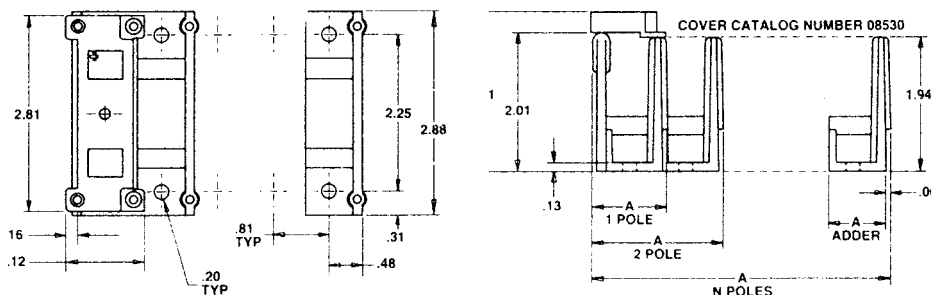
†Quick connector, not CSA Certified.

Note: Blocks for 5, 6 and 10 poles are also available. To order, simply modify the Adder catalog number. Example: 63100 becomes 63106 for 6 poles.

*Short circuit current rating with correctly sized fuse 100kA. Contact Mersen technical services for fuse type and maximum ampere required.

#Connectors are rated for 90° C wire.

Dimensions



Number of Poles	Dimension A (In.)
Adder	.812
1	1.09
2	1.90
3	2.71
N	(.812 x N) + .273

Example for 10 poles:
 $A = (.812 \times 10) + .273 = 8.39$

Safety Cover - Catalog number 08530

Polycarbonate safety covers provide dead-front protection to 62000 and 63000 series power distribution blocks. One cover is needed for each pole (1-pole block requires 1 cover, 3-pole requires 3 covers, etc.) Each cover has a test probe hole in the center for circuit checking and each is marked with the reminder "REPLACE AFTER SERVICING EQUIPMENT". To order, simply determine the total number of poles to be protected and specify the same number of 08530 safety covers. Mounting screws are supplied with cover. Recommended mounting screws for all 62000-63000 series: #10 (.190" diameter).

End Barrier - Catalog number U09311

Polycarbonate end barriers snap on to PDB Adder blocks to form 1-pole blocks. Use one barrier per block.

