



PROGRAMMABLE CONTROLS FOR IMPROVED HOME VENTILATION

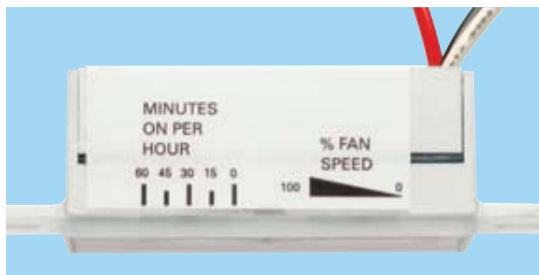
NEW PATENT PENDING DESIGN MEETS ASHRAE STANDARD 62.2

Ventech

FAN CONTROL



VT20M
MAIN CONTROL
PATENT PENDING



Main Control features fan speed control and timer to set run-time per hour. Control settings are hidden behind coverplate. 20-minute boost operates with just a touch. Soft, blue LED light is illuminated during this cycle.

Ventech Controls by Fantech provide a cost-effective way to comply with code requirements for controlled ventilation in residential applications.

When used with Fantech single or dual inlet Premium Bath Fans or a Fantech centralized inline whole house fan, controls regulate fan speed and run time for intermittent or continuous ventilation.

Settings can be customized to provide the required amount of ventilation to fit the needs and lifestyle of the homeowners. The results ... improved comfort and better indoor air quality throughout the home.

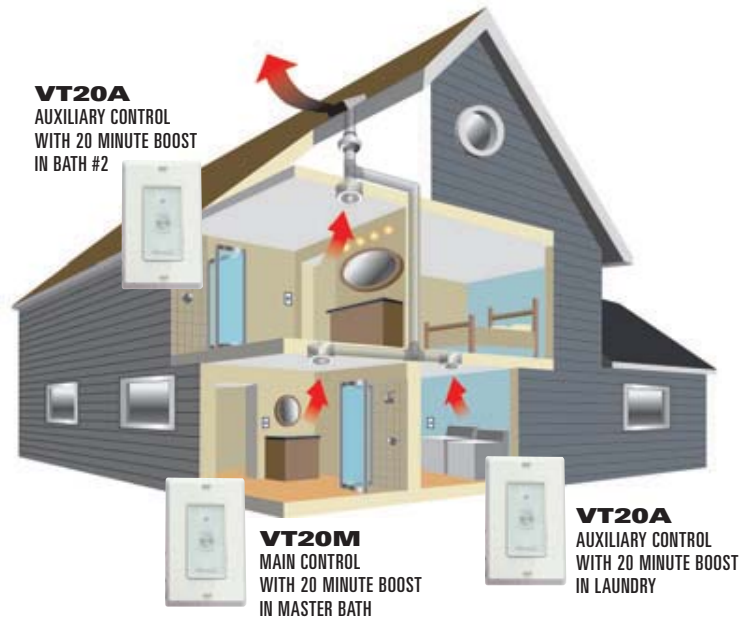
- Controls meet the requirements of US and Canadian building codes, utility programs, the Home Ventilation Institute (HVI), and ASHRAE Standard 62.2
- Main Control (Model VT20M) can be used with up to three Auxiliary Controls (Model VT20A) to allow 20 minute high speed boost in up to four locations.
- 120 V, 60 Hz; maximum load: 2.5 amps
- Place controls in areas of the home where specific ventilation rates are required such as baths, kitchen, laundry or workshop
- Set for intermittent or continuous ventilation
- Ventech Controls mount in standard single gang electrical box and require Decora-style coverplates (not included).

5 YEAR WARRANTY

IMPROVING INDOOR AIR QUALITY THROUGH BETTER VENTILATION

www.fantech.net

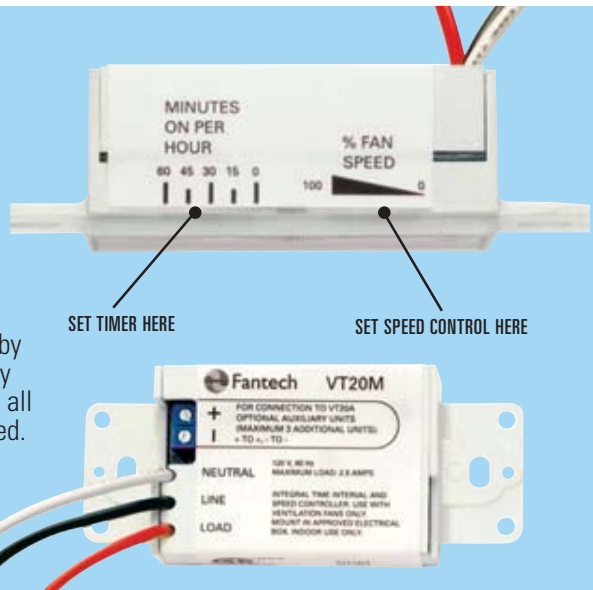
IT'S EASY TO CONTROL THE INDOOR AIR QUALITY IN YOUR HOME WITH **FANTECH VENTILATION CONTROLS**



VT20M MAIN CONTROL

FEATURES

- Infinite Speed Control can be set so ventilation fan runs at any speed between 0-100%
- Programmable Timer – run-time adjustable from 0-60 minutes per hour
- High Speed 20 minute boost activated by pressing touch pad on Main Unit (or any Auxiliary Unit). Blue LED illuminates on all units when high speed boost is activated.
- 120 V, 60 Hz;
Maximum load: 2.5 amps



VT20A AUXILIARY CONTROL

FEATURES

- When touch pad on Auxiliary Control is pressed, a blue LED light illuminates on all units and fan runs at high speed for 20 minutes.
- Use up to three Auxiliary Controls with one Main Control



United States 1712 Northgate Blvd. • Sarasota, FL. 34234 • 1.800.747.1762 • www.fantech.net
Canada 50 Kanafarkt Way • Bouctouche, NB E4S 3M5 • 1.800.565.3548 • www.fantech.ca

Item #: 450346
Rev Date: 031407

Fantech, reserves the right to modify, at any time and without notice, any or all of its products' features, designs, components and specifications to maintain their technological leadership position.