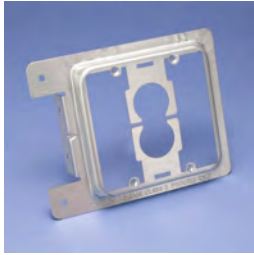


# Low Voltage Mounting Plate for New Construction – MP2S



- Provides a bracket for mounting low voltage Class 2 communication outlets
- Reduces bulges in the dry wall caused by plaster rings
- May be installed to the front or the side of the metal or wood stud
- Side support provides for a rigid installation
- Attaches with self-tapping screws or nails
- Works with wood or metal studs



Part Number	MP2S
Material	Steel
Finish	Plain
Gang	2
Drywall Thickness	1/2" – 5/8"
Standard Packaging Quantity	25 pc
UPC	78285648662
UNSPSC	39121701
ETIM	EC002601
Approvals	cULus

No load rating, for positioning only.

cULus is a registered certification mark of UL LLC.

#### WARNING

ERICO products shall be installed and used only as indicated in ERICO's product instruction sheets and training materials. Instruction sheets are available at [www.erico.com](http://www.erico.com) and from your ERICO customer service representative. Improper installation, misuse, misapplication or other failure to completely follow ERICO's instructions and warnings may cause product malfunction, property damage, serious bodily injury and death.

Copyright © 2013 ERICO International Corporation. All rights reserved.

CADDY, CADWELD, CRITEC, ERICO, ERIFLEX, ERITECH, and LENTON are registered trademarks of ERICO International Corporation.

