

IBSB/IBSBR Insulated Braided Conductor for Circuit Breakers – IBSB50-630 (558511)



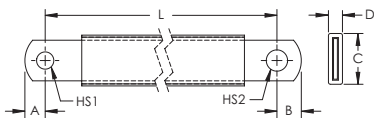
IBSB/IBSBR is the ideal ready-to-install flexible wire replacement solution that is specifically designed for connections to all molded case circuit breakers, including the most compact breakers on the market. It connects to the front access terminals of the breakers without any additional accessories, such as angular connectors, spreaders, ring terminal connectors or extenders. IBSB/IBSBR is available in cross section of 25 to 240 mm² [49.34 to 273.65 kcmil], lengths from 230 to 1,030 mm [9.06" to 40.55"], and 80 to 350 A tinned and 400 to 630 A bare (red) copper.

Manufactured in an ISO 9001 certified proprietary automated facility, IBSB/IBSBR is formed by weaving high-quality electrolytic copper wire to form a durable low voltage connector with maximum flexibility that allows for more compact power connections to circuit breakers. The IBSB/IBSBR allows users to reduce the total size and weight of the installation, improving both design flexibility and assembly aesthetics.

The IBSB/IBSBR features integral pre-punched palms that are ready to connect out of the box. There are no lugs to purchase or install, making connections simpler and faster and eliminating faulty connections due to vibration or fatigue. The insulation is a high-resistance self-extinguishing PVC.

IBSB/IBSBR is compatible with all major brand molded case circuit breakers. Contact your ERIFLEX representative to determine the correct size for your application.

- Suitable for all main molded case circuit breakers
- Resistant to vibration, improving reliability and performance
- Improves assembly flexibility and aesthetics
- Quick and easy installation
- No additional cutting, stripping, crimping and punching needed
- Integral palm without lugs or terminals reduces material and assembly weight
- Small wire diameter provides maximum flexibility
- RoHS compliant



| | |
|------------------------------------|-----------------------------|
| Part Number | IBSB50-630 |
| Article Number | 558511 |
| Typical Application Current Rating | 250 A |
| Finish | Tinned |
| Material | Copper Polyvinylchloride |
| Dielectric Strength | 20 kV/mm |
| Flammability Rating | UL® 94V-0 |
| Max Working Voltage, IEC/UL 758 | 1,000 VAC |

| | |
|-----------------------------|--|
| Part Number | IBSB50-630 |
| | 1,500 VDC |
| Max Working Voltage, UL 67 | 600 VAC/DC |
| Working Temperature | -58 to 221 °F |
| Wire Diameter | 0.006" |
| Complies With | IEC® 60439.1 IEC® 61439.1 IEC® 61439.1 Class II |
| Cross Section | 98.68 kcmil |
| Conductor Width | 0.79" |
| Conductor Thickness | 0.12" |
| Length [L] | 24.8" |
| A | 0.35" |
| B | 0.43" |
| C | 1.06" |
| D | 0.35" |
| Hole Size 1 (HS1) | 0.33" |
| Hole Size 2 (HS2) | 0.41" |
| Unit Weight | 0.86 lb |
| Certifications | ABS 13-HS1070074-PDA Bureau Veritas 41939 BV CE CSA 90005 cURus EAC 0234251 (Russian Federation) IEC 61439-1 Class II IBS-IBSB-IBSBR IEC 61439-1 IBS-IBSB-IBSBR RoHS |
| Standard Packaging Quantity | 10 pc |
| UPC | 78285679580 |
| EAN-13 | 3479775585116 |

| Maximum Ampacity Ratings | | | | | | | | | |
|--|--------------|--------------|--------------|--------------|--------------|--------------|--------------|---------------------------|---------------------------|
| Cross Section (mm ² /kcmil) | ΔT 30° C (A) | ΔT 40° C (A) | ΔT 45° C (A) | ΔT 50° C (A) | ΔT 55° C (A) | ΔT 60° C (A) | ΔT 70° C (A) | 2 Bar Current Coefficient | 3 Bar Current Coefficient |
| 25/49.34 | 116 | 134 | 142 | 150 | 157 | 164 | 177 | 1.6 | 2 |
| 50/98.68 | 213 | 246 | 260 | 274 | 288 | 301 | 325 | 1.6 | 2 |
| 70/138.15 | 226 | 261 | 277 | 291 | 306 | 319 | 345 | 1.6 | 2 |
| 100/197.35 | 298 | 344 | 365 | 385 | 404 | 422 | 456 | 1.6 | 2 |
| 120/236.82 | 363 | 419 | 444 | 468 | 491 | 513 | 554 | 1.6 | 2 |
| 185/365.1 | 416 | 480 | 509 | 537 | 563 | 588 | 635 | 1.6 | 2 |
| 240/473.65 | 556 | 642 | 681 | 718 | 753 | 786 | 849 | 1.6 | 2 |

| Circuit Breaker Compatibility | | | | | | | |
|------------------------------------|------------------------|------------------|---------|----------|-----------|-----------|-----------|
| Circuit Breaker Current Rating | 125/160 A | 250 A | 300 A | 350 A | 400 A | 500 A | 630 A |
| Part Number | IBSB25x | IBSB50x | IBSB70x | IBSB100x | IBSBR120x | IBSBR185x | IBSBR240x |
| Schneider Electric® Compact® (IEC) | NSA NG 125 | NSX 250 | NSX 400 | NSX 400 | NSX 400 | NSX 630 | NSX 630 |
| Square D® PowerPact® (UL) | H-Frame | J-Frame | L-Frame | L-Frame | L-Frame | - | - |
| ABB® Tmax® (IEC) | T1 T2 XT1 XT2 | T3 XT3 XT4 | T4 | T4 | T5 | T5 | T5 |
| ABB® Tmax® (UL) | T1 T2 | T4 XT3 | T5 | T5 | T5 | - | - |

| Circuit Breaker Compatibility | | | | | | | |
|--------------------------------|---------------------------------|---------------------|--------------------|------------------|------------------|------------------|------------------|
| Circuit Breaker Current Rating | 125/160 A | 250 A | 300 A | 350 A | 400 A | 500 A | 630 A |
| Part Number | IBSB25x | IBSB50x | IBSB70x | IBSB100x | IBSBR120x | IBSBR185x | IBSBR240x |
| | XT1 XT2 | XT4 | | | | | |
| GE® Record Plus® (IEC/UL) | FD 160 | FE 250 | FG 400 | FG 400 | FG 400 | FG 630 | FG 630 |
| Siemens® Sentron® (IEC/UL) | VL160X 3VL1 VL160 3VL2 | VL250 3VL3 | VL400 3VL4 | VL400 3VL4 | VL400 3VL4 | - | - |
| Moeller® xEnergy® (IEC) | NZM1 | NZM2 | NZM3 | NZM3 | NZM3 | NZM3 | NZM3 |
| Cutler Hammer® Series G (UL) | EG Frame | JG Frame | LG Frame | LG Frame | LG Frame | LG Frame | LG Frame |
| Legrand® (IEC) | DPX 160 DPX3 160 | DPX 250 DPX3 250 | DPX 630 | DPX 630 | DPX 630 | DPX 630 | DPX 630 |
| Hager® (IEC) | h3 160 | h3 250 | h3 630 | h3 630 | - | - | - |
| Rockwell/Allen Bradley (UL) | G-Frame H-Frame | I-Frame J-Frame | I-Frame J-Frame | - | K-Frame | K-Frame | - |
| Mitsubishi Electric (IEC) | - | NF250 DSN250 | - | NF400 DSN400 | - | - | - |
| OEZ (IEC) | BC160N | BD250N BD250S | BH630B BH630S | BH630B BH630S | BH630B BH630S | BH630B BH630S | BH630B BH630S |

ΔT = Temperature of conductors – Internal temperature of panel.

This table indicates the temperature rise produced by chosen current in the given section. This calculation does not take into account the heat dissipation from the switch gear.

ABB is a registered trademark of ABB Asea Brown Boveri Ltd. ABS is a registered certification mark of American Bureau of Shipping. CSA, CSA-US and C-CSA-US are registered trademarks of Canadian Standards Association. GE and Record Plus are registered trademark of General Electric Company. Hager is a registered trademark of the Hager Group. IEC is a registered trademark of the International Electrotechnical Commission. Legrand is a registered trademark of Legrand North America, Inc. Moeller, xEnergy, and Cutler Hammer are registered trademarks of Eaton Corporation. Schneider Electric and Compact are registered trademarks of Schneider Electric SA. Siemens and Sentron are registered trademarks of Siemens Aktiengesellschaft. Square D and PowerPact are registered trademarks of SNA Holdings Inc. Tmax is a registered trademark of ABB SACE Spa. UL, UR, cUL, cUR, cULus and cURus are registered certification marks of UL LLC.

WARNING

Pentair products shall be installed and used only as indicated in Pentair's product instruction sheets and training materials. Instruction sheets are available at erico.pentair.com and from your Pentair customer service representative. Improper installation, misuse, misapplication or other failure to completely follow Pentair's instructions and warnings may cause product malfunction, property damage, serious bodily injury and death and/or void your warranty.

© 2017 Pentair All rights reserved

Pentair, CADDY, CADWELD, CRITEC, ERICO, ERIFLEX, ERITECH and LENTON are owned by Pentair or its global affiliates.

All other trademarks are the property of their respective owners. Pentair reserves the right to change specifications without prior notice.