

# R-Frame 310+ molded-case circuit breaker 800–2500A



## Product description

- The Series G® R-Frame is NEMA,® UL,® CSA,® and IEC rated
- Zone selective interlocking, ground fault alarm only, Arcflash Reduction Maintenance System™ can now be enabled on the R-Frame
- The 310+ electronic trip unit eliminates the need for rating plugs, has adjustable continuous current settings, and provides integrated cause of trip
- All R-Frame circuit breakers are suitable for reverse-feed use

**Table 1. Frame Trip Ratings**

Frame	Interrupting Capacity (kAIC)	Ampere Rating
RGH	65	800–2500
RGC	100	800–2500



*Powering Business Worldwide*

**Table 2. RGH and RGC Rating and Ampere Range**

Specification		Description		
Breaker type		RGH		RGC
Short-circuit current ratings (kA rms) AC 50–60 Hz				
NEMA UL 489	240 Vac	100		200
	480 Vac	65		100
	600 Vac	35		50
Number of poles		3, 4		3, 4
<b>Specifications for RGH and RGC Breakers</b>				
Adjustable long-time pickup CSA 22.2 No. 5	1600A	A = 800, B = 900, C = 1000, D = 1100, E = 1200, F = 1400, G = 1500, H = 1600		
	2000A	A = 1000, B = 1200, C = 1400, D = 1600, E = 1700, F = 1800, G = 1900, H = 2000		
	2500A	A = 1600, B = 1700, C = 1800, D = 2000, E = 2100, F = 2200, G = 2400, H = 2500		
Electronic rms		LS, LSI, LSG, LSIG, ALSI, ALSIG		
Dimensions in inches (mm)		H	W	D
	Three-pole	16.00 (406.4)	15.50 (393.7)	9.00 (228.6)
	Four-pole	16.00 (406.4)	20.00 (508.0)	9.00 (228.6)
Weight (approximate) lbs (kg)	Three-pole	103.0 (47.0)		
	Four-pole	118.4 (54.0)		

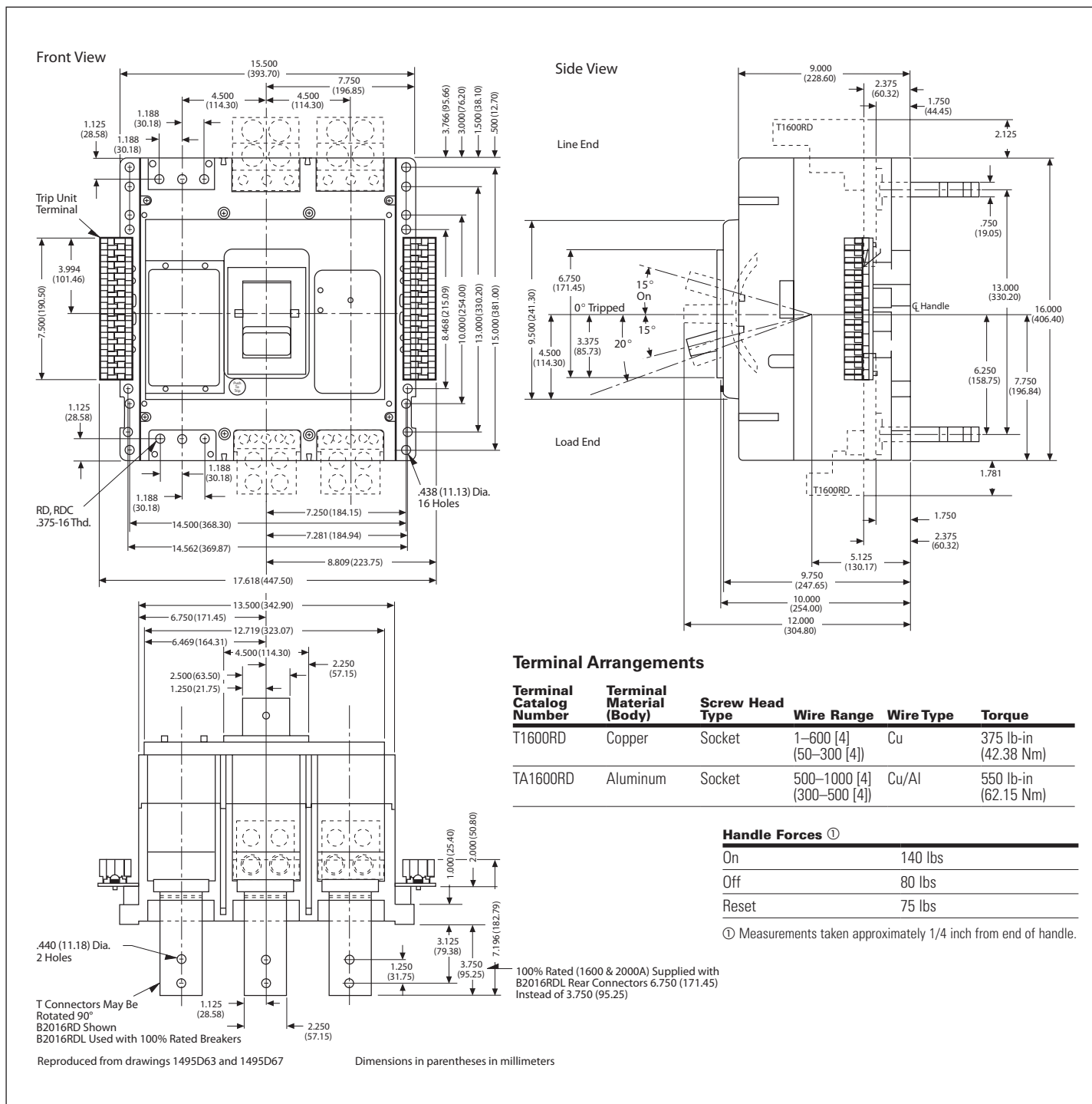


Figure 1. Types RGH, RGC Three-Pole Breakers; 1600, 2000, and 2500A Frames

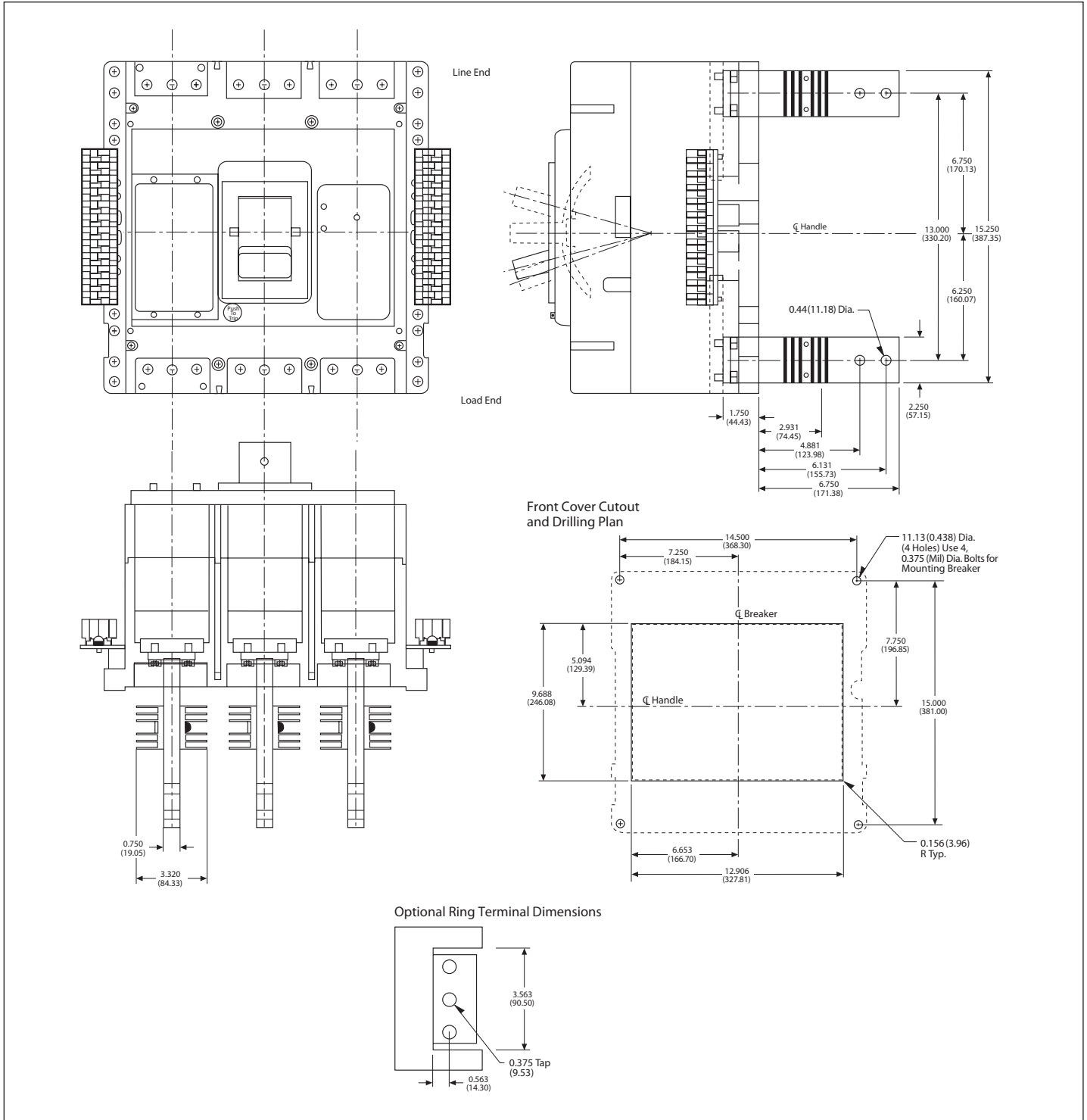


Figure 2. Types RGH, RGC Three-Pole Breakers; 1600, 2000, and 2500A Frames

**Eaton Corporation**  
 Electrical Sector  
 1111 Superior Avenue  
 Cleveland, OH 44114 USA  
 Eaton.com

© 2012 Eaton Corporation  
 All Rights Reserved  
 Printed in USA  
 Publication No. TD01209004E / Z12087  
 March 2012



Eaton is a registered trademark of Eaton Corporation.

All other trademarks are property of their respective owners.