

# McGILL® 0891 Series Indicator Lights

Specialty Products

SPECIALTY PRODUCTS: MCGILL® INDICATOR LIGHTS

## Applications

- Ideal for machine, instrument, switch control panels, automotive, bus, RV, marine and appliance industries.


## Features

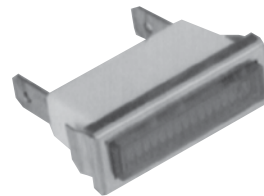
- Innovative high tech styling.
- Available in rectangular panel mount, flush and raised styles.
- Available in red, green, amber and clear lens colors.
- Choice of 14 or 28 Vac, 125 Watt incandescent or 125 Vac, 33 Watt neon lamps.
- Rectangular style has .250" x .032" terminals.
- Flush and raised styles furnished with 6"/152.4 mm, 20 gauge leads (1/2" Strip).
- Bulk and blister packed.

## Standard Materials

- Lens: nylon 221 °F/105 °C
- Housing: white nylon 257 °F/125°C
- Bezel for rectangular style: steel with chrome finish

## Certifications and Compliances

-  UL Recognized Component
- UL File Number: E180987
- UL Standard
- CSA Certified



0891-2111



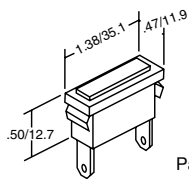
0891-1443



0891-1323

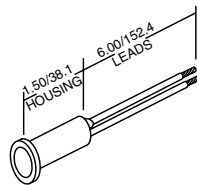
Lamp Voltage	Rectangular Style Indicator Light Catalog Number		Flush Style Indicator Light Catalog Number		Raised Style Indicator Light Catalog Number	
	Blister Packed	Bulk Packed	Blister Packed	Bulk Packed	Blister Packed	Bulk Packed
14 Vac Red	0891-1111	0891-2111	0891-1311	0891-2311	0891-1411	0891-2411
14 Vac Green	0891-1121	0891-2121	0891-1321	0891-2321	0891-1421	0891-2421
14 Vac Amber	0891-1131	0891-2131	0891-1331	0891-2331	0891-1431	0891-2431
14 Vac Clear	0891-1141	0891-2141	0891-1341	0891-2341	0891-1441	0891-2441
28 Vac Red	0891-1112	0891-2112	0891-1312	0891-2312	0891-1412	0891-2412
28 Vac Green	0891-1122	0891-2122	0891-1322	0891-2322	0891-1422	0891-2422
28 Vac Amber	0891-1132	0891-2132	0891-1332	0891-2332	0891-1432	0891-2432
28 Vac Clear	0891-1142	0891-2142	0891-1342	0891-2342	0891-1442	0891-2442
125 Vac Red	0891-1113	0891-2113	0891-1313	0891-2313	0891-1413	0891-2413
125 Vac Green	0891-1123	0891-2123	0891-1323	0891-2323	0891-1423	0891-2423
125 Vac Amber	0891-1133	0891-2133	0891-1333	0891-2333	0891-1433	0891-2433
125 Vac Clear	0891-1143	0891-2143	0891-1343	0891-2343	0891-1443	0891-2443

## Dimensions in Inches/Millimeters



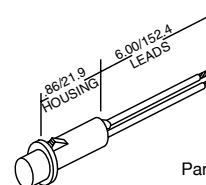
Panel Mounting Hole: 1.280" x .395"  
Panel Thickness: .032" - .080"

Rectangular Style



Flush Lens Dia.: .375"  
Panel Mounting Hole Dia.: .315" - .318" (with mounting clip)

Flush Style



Lighted Lens Dia.: .460"  
Lighted Lens Ht.: .250"  
Panel Mounting Hole Dia.: .500" - .503"  
Panel Thickness: .032" - .090"

Raised Style