

# Zinc 2-Screw Connectors

## For Non-Metallic Sheathed Cable

### Type C

#### Use:

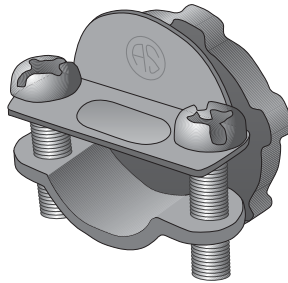
Open throat type for nonmetallic sheathed cable.

#### Features:

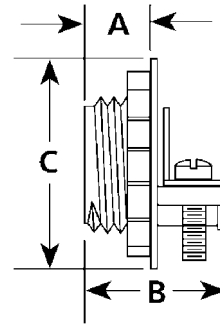
- Furnished with locknuts
- Male hub threads NPS

#### Material/Finish:

Zinc Die Cast Body  
Zinc Plated Steel Clamp



Type C-500



#### Third Party Certification:



UL Listed: E25015



CSA Certified: 014489

#### Applicable Third Party Standards:

UL Standard: 514B  
CSA Standard: C22.2 No. 18  
NEMA: FB-1.  
Fed. Spec: W-F-406D,  
Type 1, Class 4, Style M,N; Kind M,N

#### Note:

All connectors listed for use with a single cable only except for the C-500 which is also listed for use with two 14-2 AWG or two 12-2 AWG NM cables. C-500 also listed for flexible cord with a diameter range of 0.29" to 0.45".

Trade Size (inches)	Catalog Number	Dimensions in Inches			Nm Cable Range
		A	B	C	
3/8*	C-500	0.36	0.81	0.91	14-2 to 12-2
3/4	C-750	0.42	0.94	1.20	10-3 to 8-2
1	C-1000	0.51	1.11	1.51	10-3 to 4-2
1	C-1001-R	0.51	1.11	1.51	10-3 to 4-2

\*3/8" fits 1/2"KO