

FM9™ Aluminum Unilet® Conduit Outlet Bodies, Covers and Gaskets

For use with Rigid Steel, Rigid Aluminum and IMC.

Applications

- Serve as pulling fittings.
- Make bends in conduit system.
- Provide openings for splicing.
- Connect and change direction of conduit runs.
- Allow connections for branch runs.
- Permit access to conductors for maintenance.

Features

- Roomy interiors: deep body cavity provides increased volume allowing higher wiring capacity.
- Smooth, rounded integral bushings in hubs protect conductor insulation.
- Accurately tapped, tapered threads for tight, rigid joints and excellent ground continuity.
- Completely interchangeable with Crouse-Hinds + Mark9™ + bodies, gaskets and covers. Equivalent FM9 and Mark 9™ + units have identical applications and installation dimensions.
- Seven body styles available in 1/2" thru 4" sizes, TB's in 1/2" thru 2" and X's in 1/2" thru 1".
- Aluminum Unilets: produced from a high-strength copperfree aluminum alloy, for light weight and high corrosion resistance.
- FM9™ covers with integral gasket are approved for use in wet locations.
- Covers are domed for extra wiring space.
- Smooth hub bushings and cover openings protect conductor insulation. Smooth hub openings allow easy conduit joining.
- Stainless steel pan-head cover screws secure cover to body and provide superior screwdriver seating and torque. Cover screws are captive to prevent loss in sizes 1/2" thru 2".
- Hub size, body style, compliance data, maximum wire number/size and cubic capacity molded into body.

Standard Materials

- Conduit bodies: copperfree (4/10 of 1% max.) aluminum
- Covers: stamped copperfree (4/10 of 1% max.) aluminum
- Cover screws: stainless steel
- Gaskets: neoprene

Standard Finishes

- Conduit bodies, covers and screws: natural

Certifications and Compliances

- UL Standards: 514A, 514B
- UL Listed: E2527
- CSA Standard: C22.2 No. 18.3
- CSA Certified: 065183
- NEMA Standard: FB-1

Options

- PVC coating available on all bodies and select covers. Add suffix **-PVC** to catalog number.



Type LL with Form-IN-Place cover










Captive Stainless Steel Pan-Head Cover Screws

+ Crouse-Hinds and Form 9 are registered trademarks of Cooper Crouse-Hinds.

FM9™ Aluminum Unilet® Conduit Bodies, Covers and Gaskets

For use with Rigid Steel, Rigid Aluminum and IMC Conduit.

Appleton FM9 Conduit Bodies * ‡				
Hub Size (Inches)	C	LB	LL	LR
				
1/2	C19	LB19	LL19	LR19
3/4	C29	LB29	LL29	LR29
1	C39	LB39	LL39	LR39
1-1/4	C49	LB49	LL49	LR49
1-1/2	C59	LB59	LL59	LR59
2	C69	LB69	LL69	LR69
2-1/2	C789	LB789	LL789	LR789
3	C889	LB889	LL889	LR889
3-1/2	C989	LB989	LL989	LR989
4	C1089	LB1089	LL1089	LR1089
Hub Size (Inches)	T	TB	X	
				
1/2	T19	TB19	X19	
3/4	T29	TB29	X29	
1	T39	TB39	X39	
1-1/4	T49	TB49	-	
1-1/2	T59	TB59	-	
2	T69	TB69	-	
2-1/2	T789	-	-	
3	T889	-	-	
3-1/2	T989	-	-	
4	T1089	-	-	

* Refer to following page for Wiring Capacity Tables
 ‡ PVC coating available on all FM9 bodies. Add suffix **-PVC** to catalog number.



FM9™ Aluminum Unilet® Covers, Gaskets and Wiring Capacity

For use with Rigid Steel, Rigid Aluminum and IMC Conduit.

Fittings

FITTINGS: CONDUIT BODIES

Appleton FM9 Blank Covers and Gaskets and Stamped Aluminum Cover with Integral Gasket (Covers furnished with Stainless Steel Screws)

Body Size (Inches)	Stamped Aluminum Cover ‡	Solid Gasket Neoprene
		
1/2	190	GASK1941
3/4	290	GASK1942
1	390	GASK1943
1-1/4	490	GASK1944
1-1/2	590	GASK1945
2	690	GASK1946
2-1/2	889	GASK808N
3	889	GASK808N
3-1/2	989	GASK809N
4	989	GASK809N

Wiring Capacity: Combine Body and Cover Capacities for Total usable Capacity per NEC 314.16(A)

Hub Size (Inches)	Capacity (in ³ /dm ³)						Cover
	C	LB	LL LR	T	TB	X	
1/2	4.80/0.08	5.00/0.08	5.30/0.09	5.00/0.08	6.80/0.11	7.30/0.12	0.50/0.01
3/4	7.80/0.13	8.30/0.14	8.50/0.14	8.30/0.14	11.00/0.18	11.30/0.19	0.80/0.01
1	12.30/0.20	12.80/0.21	13.30/0.22	12.50/0.20	16.50/0.27	17.00/0.28	1.00/0.02
1-1/4	25.30/0.41	26.50/0.43	27.30/0.45	26.30/0.43	25.80/0.42	–	1.50/0.02
1-1/2	37.50/0.61	39.00/0.64	39.80/0.65	38.50/0.63	38.50/0.63	–	2.50/0.04
2	77.50/1.27	81.30/1.33	82.80/1.36	79.50/1.30	77.00/1.26	–	6.50/0.11
2-1/2	230.00/3.77	230.00/3.77	230.00/3.77	230.00/3.77	–	–	12.30/0.20
3	250.00/4.10	250.00/4.10	250.00/4.10	250.00/4.10	–	–	12.30/0.20
3-1/2	450.00/7.37	450.00/7.37	450.00/7.37	450.00/7.37	–	–	24.00/0.39
4	470.00/7.70	470.00/7.70	470.00/7.70	470.00/7.70	–	–	24.00/0.39

‡ PVC coating available on select FM9 covers. Add suffix **-PVC** to catalog number.

FM9® Form-IN-Place Covers with Integral Gaskets

For FM9® Unilet® Conduit Outlet Bodies.

Class I, Division 2
NEMA 3R

Applications

- Cover with integral gasket for FM9 conduit bodies.
- Can be used as replacement covers for installed bodies or in new installations.

Features

- Benefit from superior sealing, reduced inventory parts and faster installation times.
- Captive pan-head screws.
- High-strength, corrosion and weather resistant.
- Approved for wet locations.
- Fits all body configurations and sizes from 1/2" thru 4".

Standard Materials

- Stamped aluminum


Certifications and Compliances

- UL Standard: 514A
- UL Listed: E2527
- CSA Standard: C22.2 No. 18.3
- CSA Certified: 065183
- NEMA Standard: FB-1



Fittings

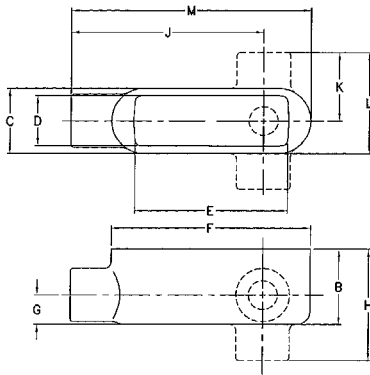
FITTINGS: CONDUIT BODIES

Hub Size (Inches)	Stamped Aluminum
	
1/2	190IG
3/4	290IG
1	390IG
1-1/4	490IG
1-1/2	590IG
2	690IG
2-1/2 & 3	889IG
3-1/2 & 4	989IG

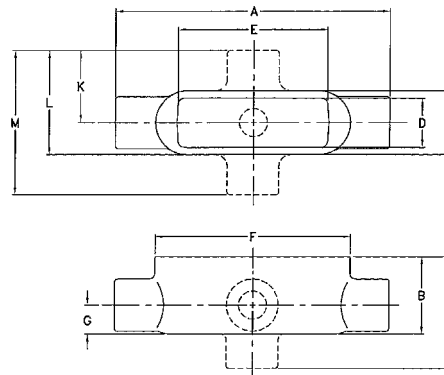
FM9™ Conduit Body Dimensions

Fittings

FITTINGS: CONDUIT BODIES



Type LB, LL & LR



Type C, T, TB & X

Hub Size	Dimensions in Inches/Millimeters													
	A	B	C	D	E	F	G	H	J	K	L	M	N	
C, LB, T, LL, & LR	1/2	4.97/ 126.2	1.56/ 39.6	1.38/ 35.1	1.06/ 26.9	3.28/ 83.3	4.22/ 107.2	0.63/ 16.0	2.31/ 58.7	3.59/ 91.2	1.44/ 36.6	2.13/ 54.1	-	4.59/ 116.6
	3/4	5.69/ 144.5	1.81/ 46.0	1.56/ 39.6	1.22/ 31.0	3.94/ 100.1	4.81/ 122.2	0.75/ 19.1	2.59/ 65.8	4.09/ 103.9	1.59/ 40.4	2.38/ 60.5	-	2.52/ 64.0
	1	6.59/ 167.4	2.06/ 52.3	1.75/ 44.5	1.41/ 35.8	4.56/ 115.8	5.59/ 142.0	0.88/ 22.4	3.03/ 77.0	4.84/ 122.9	1.84/ 46.7	2.72/ 69.1	-	6.09/ 154.7
	1-1/4	7.63/ 193.8	2.69/ 68.3	2.19/ 55.6	1.88/ 47.8	5.25/ 133.4	6.56/ 166.6	1.09/ 27.7	3.75/ 95.3	5.38/ 136.7	2.16/ 54.9	3.25/ 82.6	-	7.09/ 180.1
	1-1/2	8.25/ 209.6	3.03/ 77.0	2.53/ 64.3	2.19/ 55.6	5.94/ 150.9	7.25/ 184.2	1.25/ 31.8	4.03/ 102.4	6.00/ 152.4	2.25/ 57.2	3.53/ 89.7	-	7.81/ 198.4
	2	10.69/ 271.5	3.75/ 95.3	3.19/ 81.0	2.81/ 71.4	8.06/ 204.7	9.56/ 242.8	1.50/ 38.1	4.88/ 124.0	7.88/ 200.2	2.66/ 67.6	4.25/ 108.0	-	10.13/ 257.3
	2-1/2	15.63/ 397.0	4.94/ 125.5	5.00/ 127.0	4.25/ 108.0	10.88/ 276.4	12.25/ 311.2	2.50/ 63.5	6.63/ 168.4	11.44/ 290.6	4.19/ 106.4	6.69/ 169.9	-	13.94/ 354.1
	3	15.63/ 397.0	5.31/ 134.9	5.00/ 127.0	4.25/ 108.0	10.88/ 276.4	12.25/ 311.2	2.50/ 63.5	7.00/ 177.8	11.44/ 290.6	4.19/ 106.4	6.69/ 169.9	-	13.94/ 354.1
	3-1/2	18.75/ 476.3	6.19/ 157.2	6.25/ 158.8	5.44/ 138.2	13.44/ 341.4	15.00/ 381.0	3.13/ 79.5	8.06/ 204.7	13.75/ 349.3	5.00/ 127.0	8.13/ 206.5	-	16.88/ 428.8
	4	18.75/ 476.3	6.44/ 163.6	6.25/ 158.8	5.44/ 138.2	13.44/ 341.4	15.00/ 381.0	3.13/ 79.5	8.31/ 211.1	13.75/ 349.3	5.00/ 127.0	8.13/ 206.5	-	16.88/ 428.8
TB & X	1/2	5.94/ 150.9	1.94/ 49.3	1.38/ 35.1	1.03/ 26.2	3.28/ 83.3	4.22/ 107.2	0.63/ 16.0	2.75/ 69.9	-	1.56/ 39.6	2.25/ 57.2	3.13/ 79.5	5.06/ 128.5
	3/4	6.56/ 166.6	2.22/ 56.4	1.56/ 39.6	1.22/ 31.0	3.94/ 100.1	4.81/ 122.2	0.75/ 19.1	3.03/ 77.0	-	1.66/ 42.2	2.44/ 62.0	3.31/ 84.1	5.69/ 144.5
	1	7.50/ 190.5	2.44/ 62.0	1.75/ 44.5	1.38/ 35.1	4.56/ 115.8	5.59/ 142.0	0.88/ 22.4	3.38/ 85.9	-	1.84/ 46.7	2.72/ 69.1	3.69/ 93.7	6.53/ 165.9
	1-1/4	8.50/ 215.9	2.69/ 68.3	2.19/ 55.6	1.75/ 44.5	5.25/ 133.4	6.56/ 166.6	1.09/ 27.7	3.75/ 95.3	-	-	-	-	7.53/ 191.3
	1-1/2	8.25/ 209.6	3.03/ 77.0	2.53/ 64.3	2.19/ 55.6	5.94/ 150.9	7.25/ 184.2	1.25/ 31.8	4.03/ 102.4	-	-	-	-	7.81/ 198.4
	2	10.69/ 271.5	3.75/ 95.3	3.19/ 81.0	2.75/ 69.9	8.06/ 204.7	9.56/ 242.8	1.50/ 38.1	4.88/ 124.0	-	-	-	-	10.13/ 257.3