
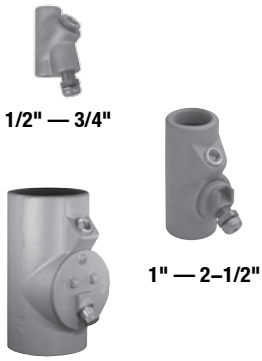


# EY 40% Fill Expanded Fill Sealing Fittings for Close Turning Radius

## Explosionproof, Dust-Ignitionproof, Raintight

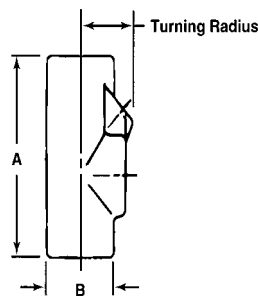
UNILETS® for Use with Threaded Rigid Metal Conduit and IMC.

Class I, Division 1 and 2 Groups A◇, B◆, C, D  
 Class II, Division 1 and 2 Groups E, F, G  
 Class III

	Trade Size (Inches)	Inches/Millimeters			Kwiko® A Cement Required Ounces/Grams	Catalog Number ‡	
		A (Length)	B (Width)	Turning Radius †		Malleable Iron	Almag 35 Aluminum
<b>EYSEF Female 1/2"-4" Vertical and Horizontal Conduit Seals for Close Turning Radius</b>							
 <p>1/2" — 3/4" 1" — 2-1/2" 3" — 4"</p>	1/2	3.69/93.7	1.50/38.1	1.25/31.7	2.00/56.8	EYSEF50 ◇	EYSEF50AL ◇
	3/4	4.31/109.4	1.75/44.4	1.38/35.0	4.00/113.5	EYSEF75 ◇	EYSEF75AL ◇
	1	5.06/128.5	2.19/55.6	1.75/44.4	7.00/198.6	EYSEF100 ◆	EYSEF100AL ◆
	1-1/4	5.50/139.7	2.44/61.9	2.06/52.3	13.00/368.9	EYSEF125 ◆	EYSEF125AL ◆
	1-1/2	6.25/158.7	3.00/76.2	2.31/58.6	22.00/624.3	EYSEF150 ◆	EYSEF150AL
	2	7.50/190.5	3.50/88.9	2.63/66.8	36.00/1,021.5	EYSEF200 ◆	EYSEF200AL
	2-1/2	8.50/215.9	4.25/107.9	3.00/76.2	61.00/1,730.9	EYSEF250 ◆	EYSEF250AL
	3	9.19/233.4	4.75/120.6	3.31/84.0	89.00/2,525.4	EYSEF300 ◆	EYSEF300AL
	3-1/2	9.75/247.6	5.25/133.3	3.59/91.1	114.00/3,234.8	EYSEF350 ◆	EYSEF350AL
	4	11.06/280.9	6.50/165.1	4.22/107.1	202.00/5,726.6	EYSEF400	EYSEF400AL
<b>EYDEF Female 1/2"-4" Vertical Drain Seals for Close Turning Radius</b>							
 <p>1/2" — 3/4" 1" — 2-1/2" 3" — 4"</p>	1/2	3.69/93.7	1.50/38.1	1.25/31.7	4.00/113.5	EYDEF50 ◆	EYDEF50AL ◆
	3/4	4.31/109.4	1.75/44.4	1.38/35.0	6.00/170.3	EYDEF75 ◆	EYDEF75AL ◆
	1	5.06/128.5	2.19/55.6	1.75/44.4	7.00/198.6	EYDEF100 ◆	EYDEF100AL ◆
	1-1/4	5.50/139.7	2.44/61.9	2.06/52.3	13.00/368.9	EYDEF125 ◆	EYDEF125AL ◆
	1-1/2	6.25/158.7	3.00/76.2	2.31/58.6	22.00/624.3	EYDEF150 ◆	EYDEF150AL
	2	7.50/190.5	3.50/88.9	2.63/66.8	36.00/1,021.5	EYDEF200 ◆	EYDEF200AL
	2-1/2	8.50/215.9	4.25/107.9	3.00/76.2	61.00/1,730.9	EYDEF250 ◆	EYDEF250AL
	3	9.19/233.4	4.75/120.6	3.31/84.0	89.00/2,525.4	EYDEF300 ◆	EYDEF300AL
	3-1/2	9.75/247.6	5.25/133.3	3.59/91.1	114.00/3,234.8	EYDEF350 ◆	EYDEF350AL
	4	11.06/280.9	6.50/165.1	4.22/107.1	202.00/5,726.6	EYDEF400	EYDEF400AL

Fittings

FITTINGS: HAZARDOUS SEALING FITTINGS



† Turning radius with cover or plug removed.

‡ PVC coating available on select sealing fittings. Add suffix **-PVC** to catalog number.

◇ Indicates items in the shaded area which are UL Listed for Class I, Groups A, B, C, D; Class II, Groups E, F, G; and Class III.

◆ Indicated items in the shaded area which are UL Listed for Class I, Groups B, C, D; Class II, Groups E, F, G; and Class III.