

# Cast Device Boxes

For Rigid Conduit & IMC

**Types**

**FS - Shallow**

**FD - Deep**

**Use:**

Accommodates wiring devices and provides opening to splice, tap or pull conductors.

**Features:**

- Tapered threaded hubs (NPT) with integral bushings.
- Both FS and FD styles are deeper than similar boxes, providing greater internal volume.
- Internal grounding screw standard on all boxes.
- Mounting feet standard on FS, FD, FSC, FDC, FSA and FDA styles. FS/ FD boxes without mounting lugs may be supported by the attached conduits per NEC Section 314-23(E).
- Available single gang, two gang and tandem styles.
- Suitable for use in wet locations when used with gasketed covers.
- Gray Iron is suitable for concrete use.
- For use with FS style covers on Pages AE3 and AE4 as well as standard device plates made of steel, brass, bakelite, etc.

**Material/Finish:**

Gray Iron/Zinc Electroplated/Aluminum Enamel.  
Copper-free Aluminum/Aluminum Enamel.

**Optional Finish:**

For additional corrosion protection, specify Hot Dip Galvanized. Add suffix "G" to Gray Iron catalog number. Contact your local representative for pricing and availability.

**Third Party Certification:**



UL Listed:  
E-18095  
Raintight-Suitable for wet locations when used with gasketed covers. See pages AE3 and AE4.



CSA Certified:  
009795  
Raintight-Suitable for wet locations when used with gasketed covers. See pages AE3 and AE4.

**Dimensional Data:**

See page AE6.

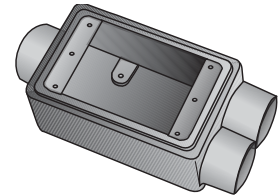
Trade Size (inches)	Catalog Number Gray Iron	Catalog Number Aluminum
1/2	FSCC-1-50	
3/4	FSCC-1-75	FSCC-1-75A
1/2	FDCC-1-50	
3/4	FDCC-1-75	
1/2	FSCT-1-50	
3/4	FSCT-1-75	
1	FSCT-1-100	
1/2	FDCT-1-50	
3/4	FDCT-1-75	
1	FDCT-1-100	
1/2	FSX-1-50	
3/4	FSX-1-75	
1/2	FDX-1-50	
3/4	FDX-1-75	
1/2	FS-2-50	
3/4	FS-2-75	FS-2-75A
1	FS-2-100	
1/2	FD-2-50	
3/4	FD-2-75	
1	FD-2-100	
1/2	FSC-2-50	
3/4	FSC-2-75	FSC-2-75A
1	FSC-2-100	
1/2	FDC-2-50	
3/4	FDC-2-75	
1	FDC-2-100	
3/4	FS-2T-75	

**Applicable Third Party Standards:**

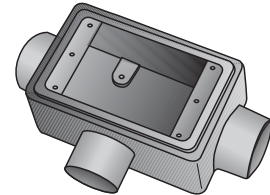
UL Standard: 514A  
CSA Standard: C22.2 No. 18  
Fed Spec: A-A-50563  
NEMA: FB-1

**Suggested Specifications:**

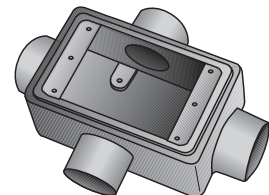
Where cast device boxes are required for mounting wiring devices or splicing, taps or pulling conductors, they are zinc electroplated gray iron with aluminum enamel or copper-free aluminum. They are UL Listed and CSA Certified for wet locations when used with gasketed covers.



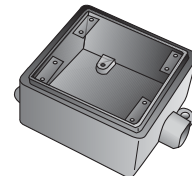
**Type FSCC & FDCC**  
Single Gang without mounting feet



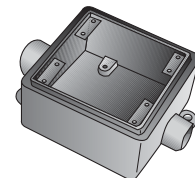
**Type FSCT & FDCT**  
Single Gang without mounting feet



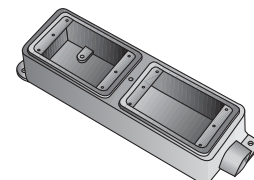
**Type FSX & FDX**  
Single Gang without mounting feet



**Type FS-2 & FD-2**  
Two Gang with mounting feet



**Type FSC-2 & FDC-2**  
Two Gang with mounting feet



**Type FS-2T**  
Tandem with mounting feet