

Aluminum Conduit Bodies

For Rigid Conduit & IMC

Types LB, T, LL, LR, C

Use:

To provide access to conductors for pulling, splicing, maintenance and future changes/upgrades. Allows connection of straight conduit runs, branch conduit runs and 90° bends.

Features:

- Tapered threaded hubs (NPT).
- Raintight when used with gasketed covers.
- For covers and gaskets, see Page AC5.
- Internal volume and maximum wire clearly marked on castings.

Material/Finish:


½" - 2" Trade Size


Die-cast Copper-free Aluminum/
Aluminum Enamel

2½" - 4" Trade Size

Sand-cast Copper-free Aluminum/
Aluminum Enamel

Third Party Certification:

 UL Listed: E-18095
Suitable for wet locations when used with gasketed covers.

 CSA Certified: 009795
Suitable for wet locations when used with gasketed covers.

Applicable Third Party Standards:

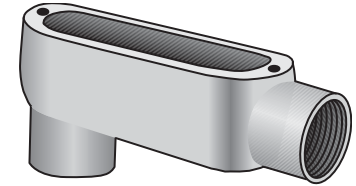
UL Standard: 514A
CSA Standard: C22.2 No. 18
Fed Spec: A-A-50563
NEMA: FB-1, FB-2.10

Dimensional Data:

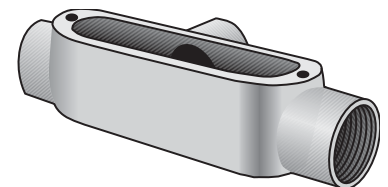
See Pages AC6, AC7

Note: Conduit bodies are suitable for use in Class I, Div. 2 hazardous locations per NEC Section 501-4(B).

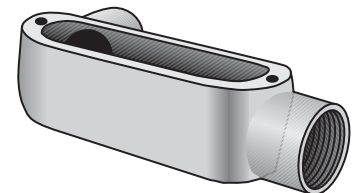
Trade Size (inches)	Catalog Number Die-Cast	Catalog Number Sand-Cast
½	LB-50A	
¾	LB-75A	
1	LB-100A	
1¼	LB-125A	
1½	LB-150A	
2	LB-200A	
2½		LB-250A
3		LB-300A
3½		LB-350A
4		LB-400A
½	T-50A	
¾	T-75A	
1	T-100A	
1¼	T-125A	
1½	T-150A	
2	T-200A	
2½		T-250A
3		T-300A
3½		T-350A
4		T-400A
½	LL-50A	
¾	LL-75A	
1	LL-100A	
1¼	LL-125A	
1½	LL-150A	
2	LL-200A	
2½		LL-250A
3		LL-300A
3½		LL-350A
4		LL-400A
½	LR-50A	
¾	LR-75A	
1	LR-100A	
1¼	LR-125A	
1½	LR-150A	
2	LR-200A	
2½		LR-250A
3		LR-300A
3½		LR-350A
4		LR-400A
½	C-50A	
¾	C-75A	
1	C-100A	
1¼	C-125A	
1½	C-150A	
2	C-200A	
2½		C-250A
3		C-300A
3½		C-350A
4		C-400A



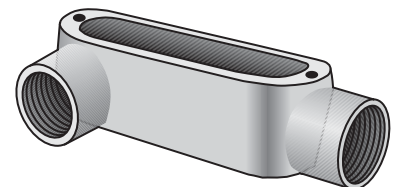
Type LB-A



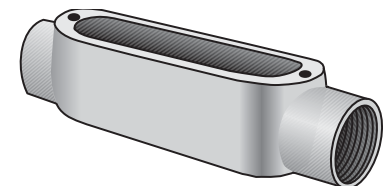
Type T-A



Type LL-A



Type LR-A



Type C-A