

Zinc Cable & Conduit Connectors

For Flexible Metal Conduit

Type SC

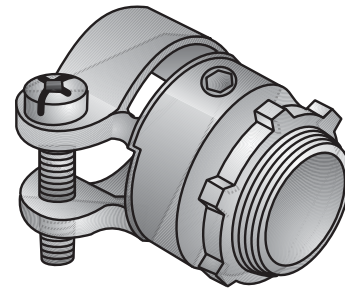
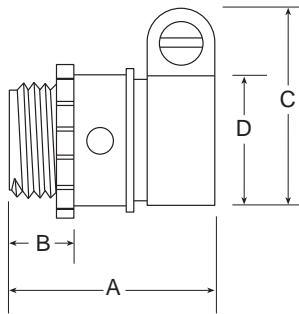
Straight Squeeze

Use:

These squeeze type connectors are used to terminate flexible metal conduit to a ½" knockout in a dry location box or enclosure.

Features:

- Male hub threads NPS
- Available with insulated throat
- Furnished with locknuts
- Combination head screws on SC-38, SC(I)-50 and SC(I)-75.



Type SC-38

Material/Finish:

Zinc Die Cast

Third Party Certification:



UL Listed: E32539



CSA Certified: LR14489

Applicable Third Party Standards:

UL Standard: 514B

CSA Standard: C22.2 No. 18

NEMA: FB-1

Fed. Spec: W-F-406D,

Type 1, Class 1, Style A, Kind F.

| Trade Size (inches) | Catalog Number | Insulated Throat Catalog Number | Dimensions in Inches | | | Inside Diameter Range | |
|---------------------|----------------|---------------------------------|----------------------|------|------|-----------------------|---------|
| | | | A | B | C | D (max) | D (min) |
| 3/8* | SC-38 | | 1.50 | 0.48 | 1.06 | 0.65 | 0.53 |
| 1/2 | SC-50 | SCI-50 | 1.50 | 0.48 | 1.35 | 1.00 | 0.88 |
| 3/4 | SC-75 | SCI-75 | 1.61 | 0.50 | 1.57 | 1.16 | 0.94 |
| 1 | SC-100 | | 1.75 | 0.55 | 1.97 | 1.38 | 1.25 |
| 1 1/4 | SC-125 | | 1.92 | 0.61 | 2.23 | 1.63 | 1.50 |
| 1 1/2 | SC-150 | | 2.09 | 0.71 | 2.52 | 2.00 | 1.75 |
| 2 | SC-200 | | 2.35 | 0.73 | 3.06 | 2.50 | 2.22 |
| 2 1/2 | SC-250 | | 2.89 | 0.89 | 3.86 | 3.06 | 2.75 |
| 3 | SC-300 | | 3.89 | 1.00 | 4.42 | 3.56 | 3.22 |
| 3 1/2 | SC-350 | | 4.24 | 0.99 | 4.88 | 4.06 | 3.72 |
| 4 | SC-400 | | 4.55 | 1.00 | 5.46 | 4.50 | 4.16 |

*3/8" fits 1/2" K.O.

Note:

SC-38, SC-50, SC-125, SC-150 and SC-200 listed for use with regular and reduced wall steel and aluminum flexible metal conduit.

SC-75, SC-200, SC-300 and SC-350 listed for use with regular wall steel and aluminum flexible metal conduit.