

Cable Connectors

For Armored Cable

Type C-15L

2-Screw Connectors

Use:

To ground and secure Armored Cable to boxes and enclosures.

Features:

- End stopped
- Male hub threads NPS
- Provided with locknut

Material/Finish:

Malleable Iron/Zinc Electroplated

Third Party Certification:



UL Listed: E-11852

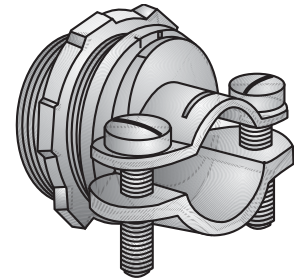
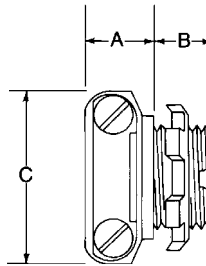


CSA Certified: 9795

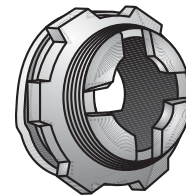
Applicable Third Party Standards:

UL Standard: 514B
 CSA Standard C22.2 No. 18
 Fed. Spec: W-F-406E
 NEMA: FB-1

Trade Size (inches)	Catalog Number	Dimensions in Inches			Cable Opening
		A	B	C	
$\frac{3}{8}$ ($\frac{1}{2}$ KO)	C-15L	$\frac{9}{16}$	$\frac{1}{2}$	$1\frac{3}{8}$	$\frac{3}{8} - \frac{5}{8}$



Type C-15L



Front View