

Universal Ground Clamp Accessories

Type GH, GWA & GWD - Swivel Types

Use:

For use with the universal ground clamps to connect grounding conductors run bare, in armor, or in conduit. Fits all basic ground clamp systems, G-200G through G-1200G and G-200B through G-1200B. See Page MA2.

Material/Finish:

Type GH-G - Malleable Iron-Hot Dip Galvanized; Steel Screws Zinc Electroplated
 Type GH-B - Cast Bronze, Brass Screws
 Type GWA - Cast Bronze, Silicon Bronze Screws
 Type GWD - Cast Bronze, Brass Screws

Third Party Certification:

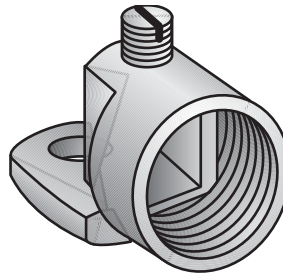


Applicable Third Party Standards:

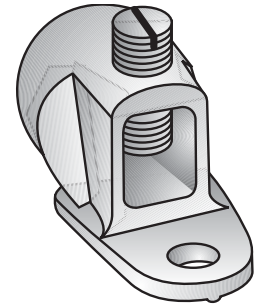
UL Standard: 467
 Fed. Spec: W-F-406E

Note:

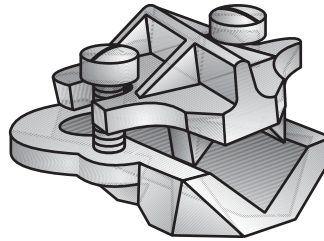
All cast bronze and brass accessories are suitable for direct burial.



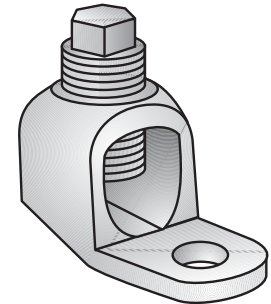
Type GH-G
 Malleable Iron – Hot Dip Galvanized



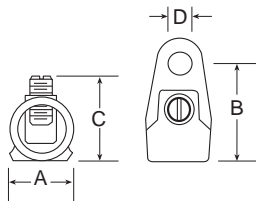
Type GH-B
 Cast Bronze



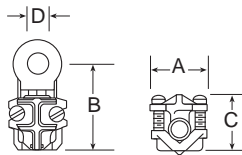
Type GWA
 Cast Bronze



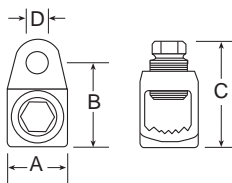
Type GWD
 Cast Bronze



Type GH



Type GWA



Type GWD

GROUND HUBS								
Malleable Iron Catalog Number	Cast Bronze Catalog Number	Hub Trade Size (In.)	Conductor Range AWG/kcmil		Dimensions in Inches			
			Min.	Max.	A	B	C Max.	D
GH-50G	GH-50B	½	8	2	1	1½	1¾	¾
GH-75G	GH-75B	¾	4	2/0	1¼	1¾	1⅞	¾
GH-100G	GH-100B	1	1	250	1½	2¼	2⅞	¾
GH-125G	GH-125B	1¼	4/0	500	1¾	2½	2⅞	¾

ARMORED GROUND WIRE CONNECTOR							
Catalog Number	Conductor Range AWG/kcmil		Max. Armor Dia.	Dimensions in Inches			
	Min.	Max.		A	B	C Max.	D
GWA-04B	8 Sol.	4 Str.	.396	1⅞	1⅞	1⅞	¾

BARE OR INSULATED WIRE DEAD END TERMINAL HUB							
Catalog Number	Conductor Range AWG/kcmil		Dimensions in Inches				
	Min.	Max.	A	B	C Max.	D	
GWD-25B	1	250 Mcm	1⅞	1¼	1¼	¾	
GWD-50B	4/0	500 Mcm	1¾	1¾	2¼	¾	