

Wedge Anchors Full Thread Zinc Plated - PC 4540



- Wedge
- Full Thread
- Zinc Plated
- Available In Larger Diameters & Lengths
- Caution! Always Wear Eye Protection

Wedge anchors can be installed through the fixture. Assemble nut and washer until the nut is flush with the top of the anchor, insert into predrilled hole. Hammer anchor into hole until the washer is flush with surface of the fixture. Expand the anchor.

CAT NO	UPC	ANCHOR HOLE DIA	OVERALL LENGTH	THREAD LENGTH	STD	MSTR	WT/STD	UNIT
W14134	59300	1/4-20	1-3/4"	3/4"	100	600	3.00#	C
W14214	59302	1/4-20	2-1/4"	1-1/4"	100	600	3.50#	C
W14314	59304	1/4-20	3-1/4"	2-1/4"	100	600	4.75#	C
W38214	59306	3/8-16	2-1/4"	1-1/4"	50	300	4.37#	C
W38234	59307	3/8-16	2-3/4"	1-5/8"	50	300	4.75#	C
W38300	59308	3/8-16	3"	1-7/8"	50	300	5.37#	C
W38334	59310	3/8-16	3-3/4"	2-5/8"	50	300	6.37#	C
W38500	59311	3/8-16	5"	3-7/8"	50	300	7.75#	C
W12234	59312	1/2-13	2-3/4"	1-3/8"	50	200	9.00#	C
W12334	59313	1/2-13	3-3/4"	2-3/8"	50	200	11.50#	C
W12400	59314	1/2-13	4-1/2"	3-1/8"	50	200	14.00#	C
W12512	59316	1/2-13	5-1/2"	4-1/8"	50	150	16.00#	C

The published length is the overall length of the anchor. Allow for fixture thickness plus one anchor diameter for the nut and washer thickness when selecting a length.

Wedge Anchors Full Thread Stainless Steel PC 4310



- Wedge
- Full Thread
- Stainless Steel
- Available In Larger Diameters & Lengths

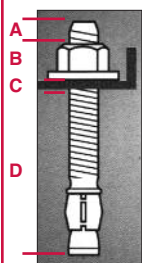
Stainless Steel Wedge Anchors resist corrosion and are ideal for applications where chemical resistance is required. Stainless can be mildly magnetic. ICC Approval (Pending).

CAT NO	UPC	ANCHOR HOLE DIA	OVERALL LENGTH	THREAD LENGTH	STD	MSTR	WT/STD	UNIT
WS14134	70310	1/4-20	1-3/4"	3/4"	100	600	3.00#	C
WS14214	70312	1/4-20	2-1/4"	1-1/4"	100	600	3.50#	C
WS14314	70314	1/4-20	3-1/4"	2-1/4"	100	600	4.75#	C
WS38214	70320	3/8-16	2-1/4"	1-1/4"	50	300	4.37#	C
WS38234	70322	3/8-16	2-3/4"	1-5/8"	50	300	4.75#	C
WS38300	70324	3/8-16	3"	1-7/8"	50	300	5.37#	C
WS38334	70326	3/8-16	3-3/4"	2-5/8"	50	300	6.37#	C
WS38500	70328	3/8-16	5"	3-7/8"	50	300	7.75#	C
WS12234	70340	1/2-13	2-3/4"	1-3/8"	50	200	9.00#	C
WS12334	70342	1/2-13	3-3/4"	2-3/8"	50	200	11.50#	C
WS12400	70344	1/2-13	4-1/2"	3-1/8"	50	200	14.00#	C
WS12512	70346	1/2-13	5-1/2"	4-1/8"	50	150	16.00#	C

The published length is the overall length of the anchor. Allow for fixture thickness plus one anchor diameter for the nut and washer thickness when selecting a length.

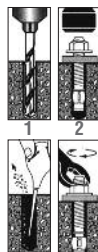
TECH TALK

Selection



- A** 3 turns of nut (approx. 1/2 bolt dia.) +
 - B** Nut & washer thickness (approx. 1 bolt dia.) +
 - C** Fixture thickness +
 - D** Minimum embedment (min. 4112 bolt dia.) =
- Minimum Anchor Length**
If minimum anchor length falls between 2 sizes, use longer size. The maximum recommended anchor embedment should be 80% of the base material thickness. If a concrete slab is 10" thick, an 8" depth would be the maximum recommended anchor embedment.

Installation



1. Use a carbide bit (ANSI B94 12) the same size as the bolt dia. Drill hole deeper than bolt embed. (min. 4.5 dia.) Do not use core bits. Maintain accurate hole size.
2. Clean hole debris
3. Add washer + thread nut flush with top of bolt. Drive bolt into hole through item to be fastened.
4. To set, tighten nut 3-4 full turns or consult chart for guide installation torque.

NOTE: Using in concrete cured less than 28 days will greatly reduce anchor strength.
WARNING: WEAR SAFETY GOGGLES

Terminology

