

DESCRIPTION

A lampholder designed for use with Halogen PAR lamp technology. Front loading of the lamp allows for intuitive relamping. Available in white or black. Ideal for accent and display lighting applications

Catalog #	Type
Project	
Comments	
Prepared by	Date

SPECIFICATION FEATURES

A...Electrical Quick Lock Adapter

Lexan polycarbonate casing. Attaches electrically and mechanically anywhere along Power-Trac. Visual polarity line assures proper grounding. Two position conductor allows use in single circuit and either circuit of two circuit track.

B...Arm

Matching finish single arm allows lampholder to rotate 338° and adjust vertically from 0° to 90°.

C...Lampholder Body

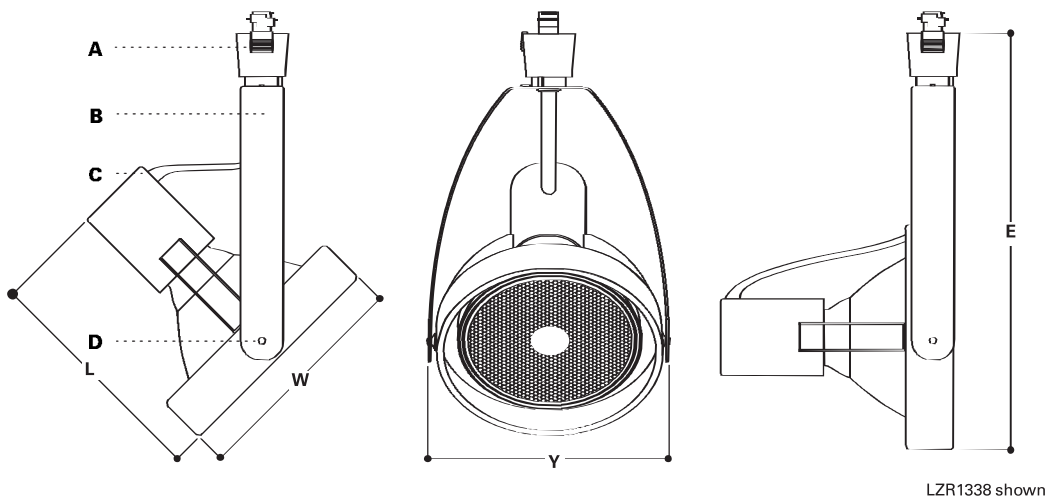
Welded steel housing provides light weight and optimal heat dissipation.

D...Swivel

Swivel maintains tension to keep lampholder properly aimed.

Listings

UL/CSA listed for use with Halo and Lazer-by-Halo Track and track systems



LZR1320



LZR1330

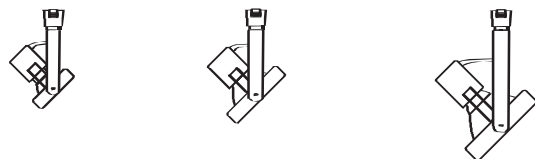


LZR1338

ORDERING INFORMATION

SAMPLE NUMBER: LZR1338P

Lampholders	Finishes	Accessories
LZR1320 LZR1330 LZR1338	P=Satin White MB=Satin Black	See below



LZR1320

For use with:
50W PAR20
W=3 1/4" [83mm]
L =3 7/8" [99mm]
E =7" [178mm]
Y =3 5/8" [92mm]

LZR1330

For use with:
75W PAR30
W=4 13/16" [123mm]
L =4 1/4" [105mm]
E =8 1/4" [207mm]
Y =5 3/16" [132mm]

Accessories

L252MB Accessory Holder
L400 Series 3 3/4" Color Filters
L274MB Cube Cell Louver

LZR1338

For use with:
150W PAR38
W=5 7/8" [150mm]
L =6" [153mm]
E =10 7/8" [277mm]
Y =6 3/16" [157mm]

Accessories

L352MB Accessory Holder
L200 Series 4 11/16" Color Filters
L275MB Cube Cell Louver

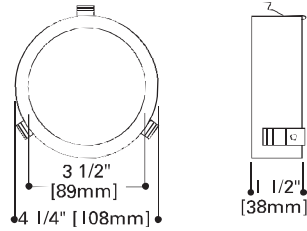
**LINE VOLTAGE
FRONT LOADING GIMBAL
LAMPHOLDERS**

Lazer by Halo

ACCESSORIES

L252 Accessory Holder

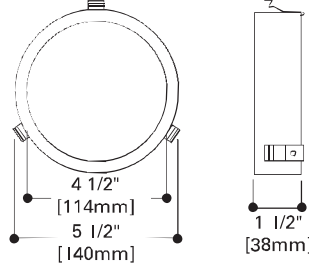
For use with LZR1330
Lampholder to hold L400
Series color filters and L274
louver.



L252 Media Holder

L352 Media Holder

For use with LZR1338
Lampholder to hold L200
Series color filters and L275
louver.

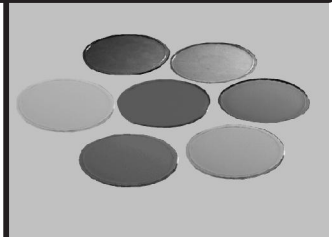
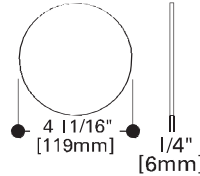


L352 Media Holder

L200 Series Color Filters

Glass Filters 4 1/16" (119mm)
diameter. For use with L1830
with L1976MB Barn Doors.

- L211=Medium Pink Color Filter
- L212=Warm Red Color Filter
- L214=Ultraviolet Filter
- L220=Daylight Blue Color Filter
- L221=Medium Blue Color Filter
- L231=Medium Amber Color Filter
- L241=Medium Green Color Filter

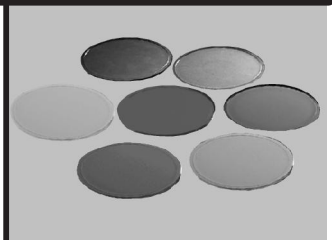
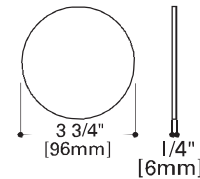


L200 Color Filters

L400 Series Color Filters

Glass Filters 3 3/4" (96mm)
diameter. For use with L1830
and L252 Media Holder.

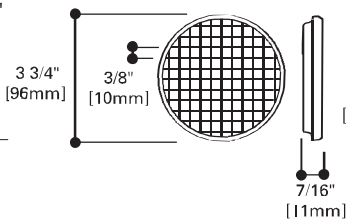
- L411=Medium Pink Color Filter
- L412=Warm Red Color Filter
- L414=Ultraviolet Filter
- L420=Daylight Blue Color Filter
- L421=Medium Blue Color Filter
- L431=Medium Amber Color Filter
- L441=Medium Green Color Filter



L400 Color Filters

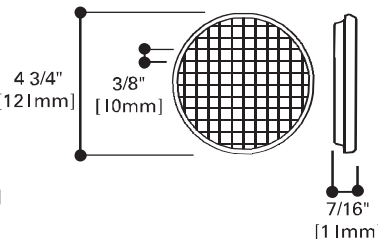
L274 Cube Cell Louver

3 3/4" OD (96mm) . Black finish 1/2"
cells for directing light and
eliminating glare. For use with
L1830 and L252MB Media Holder.



L275 Cube Cell Louver

4 3/4" OD (121mm) . Black finish
1/2" cells for directing light and
eliminating glare. For use with
L1830 and L1976MB Barn Doors.



Cube Louvers

Note: Specifications and Dimensions subject to change without notice.

Visit our web site at www.cooperlighting.com