

DESCRIPTION

Universal Lampholder accepts a wide range of lamps but creates a minimal presence. For use with Halo and Lazer-by-Halo track systems.

Catalog #	Type
Project	
Comments	
Prepared by	Date

SPECIFICATION FEATURES

A...Electrical Quick Lock Adapter

Polycarbonate casing. Attaches electrically and mechanically anywhere along Power-Trac. Visual polarity line assures proper grounding. Two position conductor allows use in single circuit and either circuit of two circuit track.

B...Stem / Arm

Stem/arm allows lampholder to rotate 338° and adjust vertically from 0° to 90°.

C...Body

L1735 features sliding sleeve that conceals base of lamp and makes lampholder / lamp combination appear more finished.

Listings

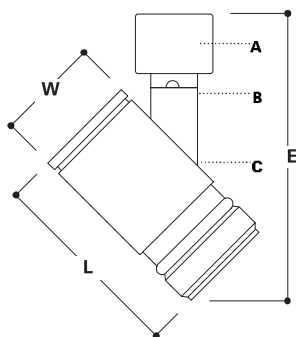
UL listed and CSA certified for use with Halo and Lazer-by-Halo track and track systems.



L1735

**LINE VOLTAGE
UNIVERSAL
LAMPHOLDERS**

Power-Trac®



ORDERING INFORMATION

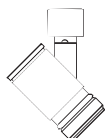
SAMPLE NUMBER: L1703P

Lampholders

Finishes

L1735

P=Satin White
MB=Matte Black



L1735

For use with:
75W PAR16,
50W PAR20,
75W PAR30,
150W PAR38

L =2 3/4" [70mm]

W=2" [51mm]

E =4 1/2" [114mm] less lamp

Note: Specifications and Dimensions subject to change without notice.

Visit our web site at www.cooperlighting.com

ADV023216
Supersedes ADV990346