

DESCRIPTION

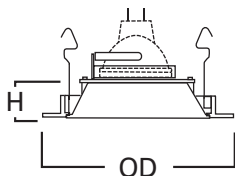
Reflector trim for 12V low voltage 4" H1499 family recessed housings. Die cast trim ring with metal reflector. Reflector and trim ring available in a variety of finishes. Three "cat's paw" springs secure trim in housing.

Catalog #		Type
Project		
Comments		Date
Prepared by		

SPECIFICATION FEATURES

- Precision die cast metal trim ring with spun reflector cone
- Provides general illumination
- 35° Tilt
- Friction clip "cat paw" retention
- Clear cover glass included with each trim, for use with non-cover glass MR16 lamps

Housings	Max Lamp Compatibility
H1499TAT H1499RTAT	50W 12V MR16
H1499ICAT H1499TCP	
H1499T75	75W 12V MR16



Dimensions

H: 1-3/8" [33mm]
OD: 5" [129mm]

ORDERING INFORMATION

SAMPLE NUMBER: 4001WB

Trim	Finish
1421= 4" Reflector	MB =Black Specular Reflector, White Trim W =White Reflector, White Trim H =Haze Reflector, White Trim C =Clear Specular Reflector, White Trim RG =Residential Gold Reflector, White Trim CG =Champagne Gold Reflector, White Trim SN =Satin Nickel Reflector and Trim TBZ =Tuscan Bronze Reflector and Trim



1421C
Clear Specular Reflector with
White Trim Ring



1421CG
Champagne Gold Reflector
with White Trim Ring



1421RG
Residential Gold Reflector with
White Trim Ring



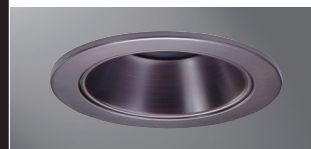
1421H
Haze Reflector with
White Trim Ring



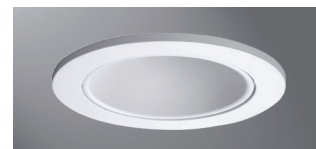
1421MB
Black Specular Reflector with
White Trim Ring



1421SN
Satin Nickel Reflector with
Satin Nickel Trim Ring



1421TBZ
Tuscan Bronze Reflector with
Tuscan Bronze Trim Ring



1421W
White Reflector,
White Trim

1421 4-Inch Reflector