

# Rigid/Intermediate Grade Conduit Fittings

## Insulated Bushings

### INSULATED THROAT BUSHINGS – ZINC DIE CAST

#### Features:

- Threaded

#### 150°C Rated – Zinc Die Cast

UL File No. E-19189



Cat. #	Size	Unit Qty.	Wt. Lbs. Per 100
H1031DC	1/2"	100	2
H1032DC	3/4"	100	3
H1033DC	1"	50	5
H1034DC	1 1/4"	50	7
H1035DC	1 1/2"	20	9
H1036DC	2"	10	11
H1037DC	2 1/2"	10	27
H1038DC	3"	5	33
H1039DC	3 1/2"	5	39
H1040DC	4"	2	46

### NON-INSULATED THROAT BUSHINGS – ZINC DIE CAST

#### Features:

- Used with locknut to terminate threaded rigid conduit or IMC to enclosure
- Threaded



Cat. #	Size	Unit Qty.	Wt. Lbs. Per 100
1031DC	1/2"	100	2
1032DC	3/4"	100	3
1033DC	1"	50	5
1034DC	1 1/4"	50	7
1035DC	1 1/2"	20	9
1036DC	2"	10	10
1037DC	2 1/2"	10	26
1038DC	3"	5	32
1039DC	3 1/2"	5	37
1040DC	4"	2	43

### NON-INSULATED THROAT BUSHINGS – MALLEABLE IRON

#### Features:

- Used with locknut to terminate threaded rigid conduit or IMC to enclosure
- Threaded



Cat. #	Size	Unit Qty.	Wt. Lbs. Per 100
1031NI	1/2"	100	3
1032NI	3/4"	100	4
1033NI	1"	50	7
1034NI	1 1/4"	50	15
1035NI	1 1/2"	10	19
1036NI	2"	20	22
1037NI	2 1/2"	10	44
1038NI	3"	10	54
1039NI	3 1/2"	5	72
1040NI	4"	5	95

### INSULATING BUSHINGS

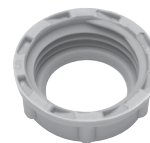
#### Features:

- Threaded

#### Standard Material:

- Plastic

UL File No. E-19189



Cat. # Rated 105°C	Cat. # Rated 150°C	Size	Unit Qty.	Wt. Lbs. Per 100
931	H 931	1/2"	50	1
932	H 932	3/4"	50	1
933	H 933	1"	50	2
934	H 934	1 1/4"	50	3
935	H 935	1 1/2"	25	3
936	H 936	2"	25	4
937	H 937	2 1/2"	10	8
938	H 938	3"	10	10
939	H 939	3 1/2"	5	11
940	H 940	4"	5	11
941		5"	5	40
942		6"	5	42