

Applications:

WH vibrating horn signals are used:

- For code or call signals, or as a general alarm in a signal system that might involve hours of continuous operation
- In non-hazardous atmospheres of industrial areas such as warehouses, yards, exteriors of buildings, and in-plant areas
- Mounted on walls or other flat surfaces with projectors aimed in a desired direction

Features:

- The joint between the body and horn assembly is gasketed for raintightness

Certifications and Compliances:

- UL Standard: 464

Standard Materials:

- Copper-free aluminum and die cast zinc

Standard Finishes:

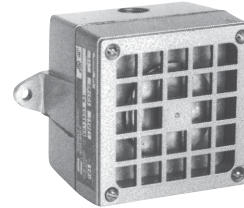
- Gray hammertone enamel

Capacity Ranges:

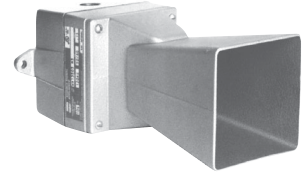
- Minimum audibility rating (dB) at 10':
AC – 87 decibels

Electrical Rating Ranges:

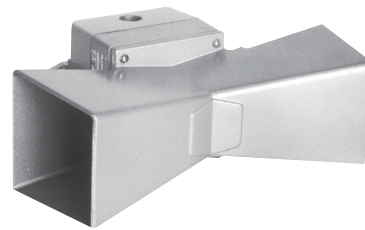
- Nominal voltage
120 AC, 50 / 60 hertz
- Operating characteristics
Voltage range +10%, -20%
Nominal watts – 18 VA on 120 VAC



WH with grill



WH with single projector



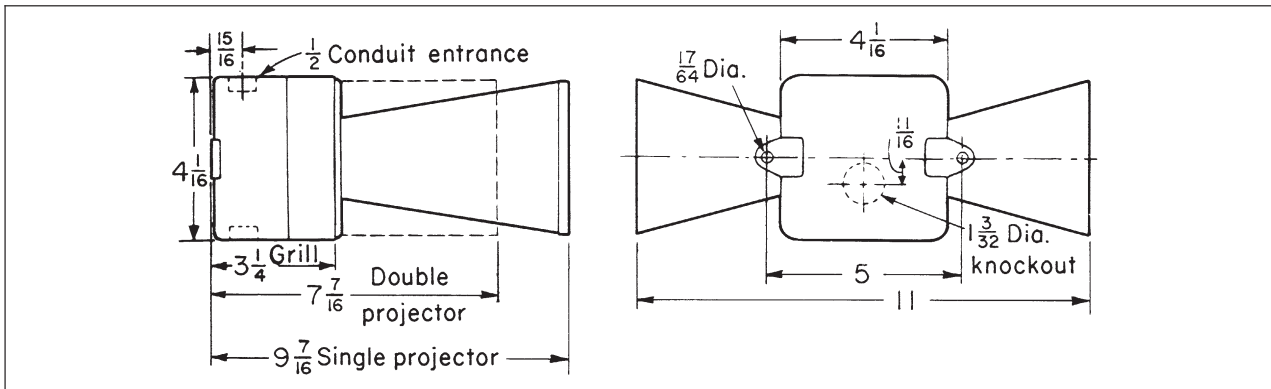
WH with double projector

Ordering Information

Nominal Voltage	Nominal Voltage	Grill Cat #	Single Projector Cat. #	Double Projector Cat. #
.15	120 AC 50 to 60 Hz	WH13503	WH13513	WH13523

Dimensions

In Inches:



Dimensions are approximate, not for construction purposes.