

# Conduit Hubs

## CONDUIT HUBS - MALLEABLE IRON

### Applications:

- Ideal for terminating electrical conduit through the walls of enclosures.
- Designed for use indoors or outdoors with rigid conduit and IMC, specific applications include food processing plants, distilleries, breweries, sewage disposal plants, chemical plants, paper processing mills and refineries.



### Features:

- Male thread type
- Tapered female thread for rigid conduit and IMC
- Recessed O-ring gasket assures raintight and secure environmental connections
- Insulated throat provides smooth pulling surface
- Locking screw on the nut doubles as a grounding screw for added safety
- Complete size range from 1/2" to 6"
- Hubs fit standard knockouts. No special tools required

### Certifications and Compliances:

- Class I, Division 2
- Class II, Divisions 1 & 2
- Class III, Divisions 1 & 2
- UL Listed – UL Standard 514B
- cUL Listed – Certified by UL to CSA Standard C22.2 No. 18
- NEMA: FB-1
- Suitable for wet locations
- RoHS Compliant

### Options:

Mechanically galvanized

Suffix  
HDG

Cat. #	Trade Size	Unit Qty.	Wt. Lbs. Per 100
MHUB1	1/2"	25	18
MHUB2	3/4"	25	25
MHUB3	1"	5	50
MHUB4	1 1/4"	5	25
MHUB5	1 1/2"	2	20
MHUB6	2"	1	10
MHUB7	2 1/2"	1	10
MHUB8	3"	1	5
MHUB9	3 1/2"	1	5
MHUB10	4"	1	2
MHUB11	5"	1	1
MHUB12	6"	1	1

## CONDUIT HUBS - IRON SPACE SAVER

### Applications:

- Ideal for terminating electrical conduit through the walls of enclosures.
- Designed for use indoors or outdoors with rigid conduit and IMC, specific applications include food processing plants, distilleries, breweries, sewage disposal plants, chemical plants, paper processing mills and refineries.

### Features:

- Male thread is on the nut for space saving.
- Quick and easy when installing rigid conduit nipple between two existing enclosures.
- Insulated throat provides smooth pulling surface.
- Furnished with SG sealing gasket.
- Hub fits standard knockouts. No special tools required.



### Certifications and Compliances:

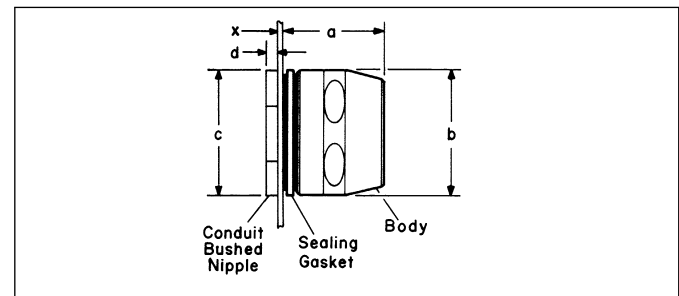
- Class I, Division 2
- Class II, Divisions 1 & 2
- Class III, Division 1 & 2
- UL Listed - UL Standard 514B.
- cUL Listed - Certified by UL to CSA Standard C22.2 No. 18.
- NEMA: FB-1
- Suitable for wet locations.
- RoHS Compliant

### Standard Materials & Finishes:

- Material: Malleable Iron
- Finish: Zinc Electroplate

### Dimensions

#### In Inches:



Cat. #	Conduit Size	Unit Qty.	Wt. Lbs. Per 100	a	b	c	d	x
HUB1	1/2"	25	18	1	1 1/4	1	1/8	9/64
HUB2	3/4"	10	25	1 1/8	1 9/16	1 3/8	5/32	1/4
HUB3	1"	5	50	1 3/8	1 7/8	1 5/8	3/16	9/32
HUB4	1 1/4"	5	25	1 1/2	2 5/16	2	1/4	7/16
HUB5	1 1/2"	2	20	1 5/8	2 1/2	2 3/8	1/4	7/16
HUB6	2"	1	10	1 11/16	3	2 13/16	1/4	7/16
HUB7	2 1/2"	1	10	2 3/16	3 3/8	3 7/16	1/4	7/16
HUB8	3"	1	5	2 7/16	4 1/4	4 1/8	1/4	7/16
HUB9	3 1/2"	1	5	2 7/16	4 3/4	4 11/16	5/16	3/4
HUB10	4"	1	2	2 9/16	5 1/4	5 1/8	5/16	1 1/8

Note: Dimension "x" is maximum wall thickness of box that will meet the requirement for three full threads engagement of nipple and fitting body when box connector or rigid conduit hub is installed in a knockout or slip hole.

