

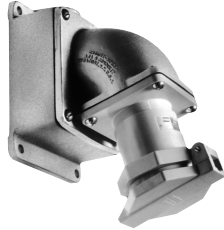
1P

Non-metallic Arktite® Heavy Duty Circuit Breaking Plugs and Receptacles

Watertight§
Corrosion-Resistant
NEMA 4X

Made of Krydon® Material, 30 A, 60 A and 100 A
600 VAC/250 VDC, 50 ■ – 400 hertz

Ordering Information:



NREA



NRE



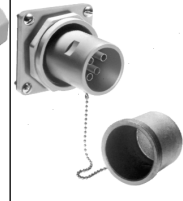
Receptacle



Mating
Plugs



Mating
Connectors



Motor
Plugs

Amps	Description	Hub Size (In.)	Snap-on Cap/ Spring Door Cat. #†	Snap-on Cap/ Spring Door Cat. #†	Cord Dia.	Plug Cat. #	Cord Connector Cat. #	Motor Plug Cat. #
30	2-wire, 3-pole	3/4	NRE3322	NR332	0.55–0.70	NPJ3383	NPR3363	NPQ338
		1	NRE3323		0.70–0.85	NPJ3384	NPR3364	
	3-wire, 4-pole	3/4	NRE3422	NR342	0.55–0.70	NPJ3483	NPR3463	NPQ348
		1	NRE3423		0.70–0.85	NPJ3484	NPR3464	
60	2-wire, 3-pole	1	NRE6323	NR632	0.75–1.07	NPJ6384	NPR6364	NPQ638
		1 1/4	NRE6324		1.07–1.35	NPJ6385	NPR6365	
	3-wire, 4-pole	1 1/4	NRE6424	NR642	0.75–1.07	NPJ6484	NPR6464	NPQ648
		1 1/2	NRE6425		1.07–1.35	NPJ6485	NPR6465	
100	2-wire, 3-pole	1 1/4	NREA10324‡	NR1032	0.93-1.21	NPJ10386	NPR10366	NPQ1038
		1 1/2	NREA10325‡		1.21-1.50	NPJ10387	NPR10367	
	3-wire, 4-pole	1 1/2	NREA10425‡	NR1042	0.93-1.21	NPJ10486	NPR10466	NPQ1048
2		NREA10426‡	1.21-1.50		NPJ10487	NPR10467		

■ For use on systems less than 60 hertz the receptacles, plugs and connectors are for disconnect use only.
§Wet and damp locations when used with spring door or snap-on cap, watertight when used with QE threaded cap.
†Krydon Arktite Receptacles are supplied with both a spring door and snap-on cap.
‡AJ back boxes are square, making it possible to install with hub in several positions.