

Rigid/Intermediate Grade Conduit Fittings

Grounding Bushings

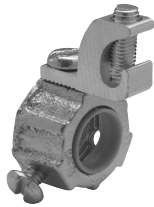
INSULATED THROAT GROUNDING BUSHINGS - MALLEABLE IRON

Applications:

- For use on threaded rigid/IMC conduit to provide a means of grounding conduit through an insulated bushing

105°C Rated Plastic Throat Liner Aluminum Lug – For Copper Or Aluminum Grounding Conductors – Threaded

UL File No. E-6225



lazylug

Cat. #	Trade Size	Lug Size	Unit Qty.	Wt. Lbs. Per 100
GLL1	1/2"	#4 - #14	50	5
GLL2	3/4"	#4 - #14	50	9
GLL3	1"	#4 - #14	50	12
GLL4	1 1/4"	#4 - #14	25	19
GLL4 10	1 1/4"	#1/0 - #8	25	23
GLL5	1 1/2"	#4 - #14	10	24
GLL5 10	1 1/2"	#1/0 - #8	10	28
GLL6	2"	#4 - #14	10	26
GLL6 10	2"	#1/0 - #8	10	32
GLL7	2 1/2"	#1/0 - #8	10	53
GLL7 30	2 1/2"	#3/0 - #6	10	60
GLL7 250	2 1/2"	250MCM - #6	10	67
GLL8	3"	#1/0 - #8	5	70
GLL8 30	3"	#3/0 - #6	5	72
GLL8 250	3"	250MCM - #6	5	76
GLL9	3 1/2"	#3/0 - #6	1	100
GLL9 250	3 1/2"	250MCM - #6	1	100
GLL10	4"	#3/0 - #6	1	110
GLL10 250	4"	250MCM - #6	1	120
GLL11	5"	#3/0 - #6	1	140
GLL11 250	5"	250MCM - #6	1	143
GLL12	6"	#3/0 - #6	1	160
GLL12 250	6"	250MCM - #6	1	163

105°C Rated Plastic Throat Liner Copper Lug – For Copper Grounding Conductors – Threaded

UL File No. E-6225



lazylug

Cat. #	Trade Size	Lug Size	Unit Qty.	Wt. Lbs. Per 100
GLL1C	1/2"	#4 - #14	50	8
GLL2C	3/4"	#4 - #14	50	12
GLL3C	1"	#4 - #14	50	14
GLL4 10C	1 1/4"	#4 - #14	25	19
GLL4C	1 1/4"	#1/0 - #8	25	30
GLL5 10C	1 1/2"	#4 - #14	10	21
GLL5C	1 1/2"	#1/0 - #8	10	32
GLL6C	2"	#4 - #14	10	29
GLL6 10C	2"	#1/0 - #8	10	40
GLL7C	2 1/2"	#1/0 - #8	10	65
GLL7 30C	2 1/2"	#3/0 - #6	10	88
GLL7 250C	2 1/2"	250MCM - #6	10	97
GLL8C	3"	#1/0 - #8	5	77
GLL8 30C	3"	#3/0 - #6	5	100
GLL8 250C	3"	250MCM - #6	5	109
GLL9C	3 1/2"	#3/0 - #6	1	125
GLL9 250C	3 1/2"	250MCM - #6	1	134
GLL10C	4"	#3/0 - #6	1	145
GLL10 250C	4"	250MCM - #6	1	154
GLL11C	5"	#3/0 - #6	1	165
GLL11 250C	5"	250MCM - #6	1	174
GLL12C	6"	#3/0 - #6	1	195
GLL12 250C	6"	250MCM - #6	1	204

