

1P

Arktite® Heavy Duty Circuit Breaking Receptacle Assemblies and Housings

NEMA 4 Watertight

60 A, 600 VAC/250 VDC, 50† – 400 hertz

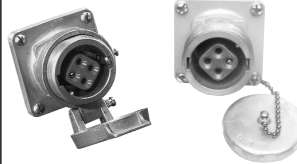
Ordering Information:



Receptacle Assembly



Receptacle



Receptacle Housing Only



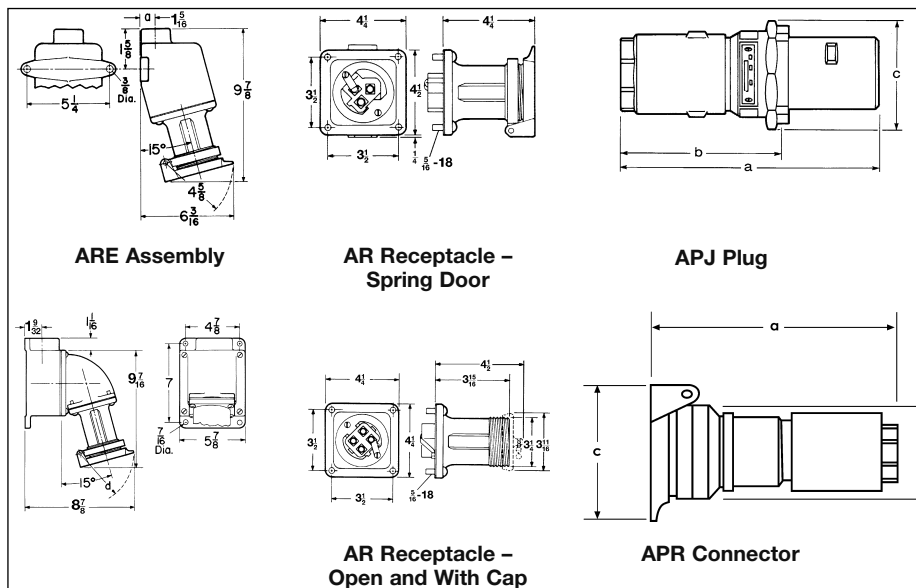
Mating Plug



Mating Connector

Description	With AJ Back Boxes and Angle Adapters		With ARE Back Boxes		Cable Dia.	Cat. #	Cat. #	
	Hub Size (In.)	Spring Door Cat. #	Threaded Cap Only Cat. #	Spring Door Cat. #				
Style 1								
2-wire, 2-pole }	1	AREA6213		ARE6213	AR621	AR627	0.50 to 1.45 APJ6275	APR6255
	1 1/4	AREA6214		ARE6214				
3-wire, 3-pole }	1	AREA6313		ARE6313	AR631	AR637	0.50 to 1.45 APJ6375	APR6355
	1 1/4	AREA6314		ARE6314				
4-wire, 4-pole }	1 1/4	AREA6414		ARE6414	AR641	AR647	0.50 to 1.45 APJ6475	APR6455
	1 1/2	AREA6415		ARE6415				
5-wire, 5-pole }	1 1/4		AREA6574			AR657	0.50 to 1.45 APJ6575	
	1 1/2		AREA6575					
Style 2								
2-wire, 3-pole }	1	AREA6323		ARE6323	AR632	AR638	0.50 to 1.45 APJ6385	APR6365
	1 1/4	AREA6324		ARE6324				
3-wire, 4-pole }	1 1/4	AREA6424		ARE6424	AR642	AR648	0.50 to 1.45 APJ6485	APR6465
	1 1/2	AREA6425		ARE6425				
4-wire, 5-pole }	1 1/4		AREA6584			AR658	0.75 to 1.45 APJ6585	APR6565
	1 1/2		AREA6585					

Dimensions (In Inches):



Config.	Plug			Connector		
	a	b	c	a	b	c
2P or 3P	8 1/2	5 3/4	3 5/8	6 1/2	3 5/8	2 15/16
4P	8 1/2	5 13/16	3 3/4	8 1/4	3 5/8	2 15/16
5P	9	6 3/16	4 7/16	8 1/4	3 5/8	3 1/4

†For use on systems less than 60 hertz the receptacles, plugs and connectors are for disconnect use only.

1P