

## North American — KBC 600V: 35-800A

### KBC

#### Specifications

Description: North American style stud-mount and flush-end fuses. These 600V fuses are supplied as replacements only. For new installations, Cooper Bussmann recommends the 700V FWP Series fuse.

Dimensions: See Dimensions illustrations.

Ratings:

Volts: — 600Vac

Amps: — 35-800A

IR: — 200kA RMS Sym.

Agency Information: CE, UL Recognition on 35-600A only.



#### Catalog Numbers (Amps)

KBC-35	KBC-100	KBC-300
KBC-40	KBC-110	KBC-350
KBC-45	KBC-125	KBC-400
KBC-50	KBC-150	KBC-450
KBC-60	KBC-175	KBC-500
KBC-70	KBC-200	KBC-600
KBC-80	KBC-225	KBC-800
KBC-90	KBC-250	

• See accessories on page 113.

#### Features and Benefits

- Low arc voltage and low energy let-through ( $I^2t$ )
- Low watts loss
- Superior cycling capability

#### Typical Applications

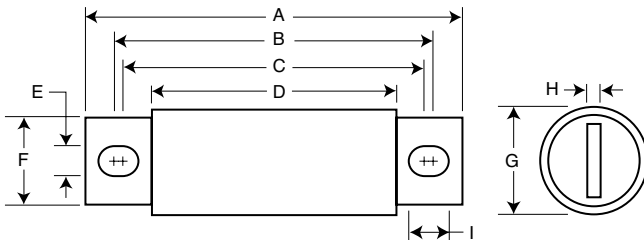
- Power converters/rectifiers
- Reduced voltage starters

#### Dimensions (in)

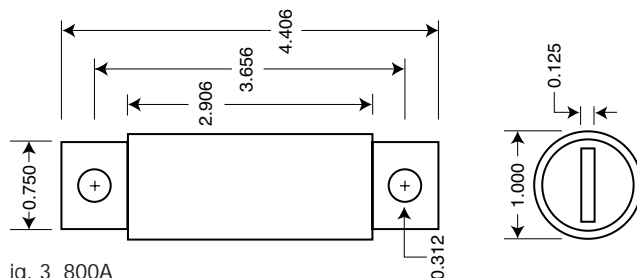
Amp Range	Fig.	A	B	C	D	E	F	G	H	I	
35-60A	1	4.375	3.750	3.500	2.750	0.343	0.625	0.813	0.094	0.468	
70-100A	2	See Drawing									
110-200A	1	4.406	3.719	3.594	2.906	0.312	0.875	1.219	0.187	0.375	
225-400A	1	5.125	4.188	3.563	2.906	0.406	1.000	1.500	0.250	0.719	
450-600A	1	5.125	4.389	3.687	2.875	0.406	1.500	2.000	0.250	0.757	
800A	3	See Drawing									

1mm = 0.0394" / 1" = 25.4mm

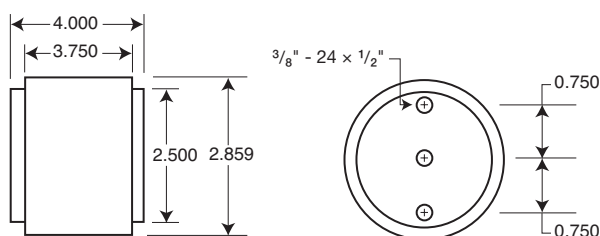
ig. 1 35-60 and 110-600A



ig. 2 70-100A



ig. 3 800A



Data Sheet: 720010