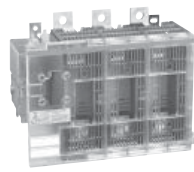


UL Fuse Class J, T, L

For a complete assembly, please select one of each:

- 1 switch
- 1 handle
- 1 shaft
- 1 terminal lug kit



FD400J3



BDS280



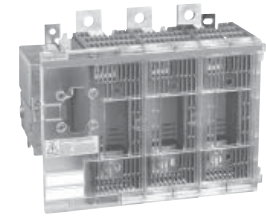
BDH114



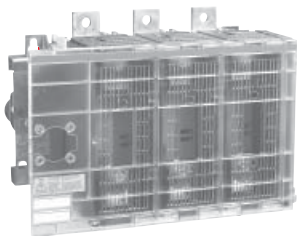
BDTL26

400 – 800 Amp switches, 600V

| UL general purpose amp rating | UL Fuse type 600V | Maximum horsepower rating | | | | | Catalog number |
|-------------------------------|-------------------|---------------------------|------|------|------|------|----------------|
| | | Three phase | | | | | |
| | | 200V | 208V | 240V | 480V | 600V | |
| 2 pole | | | | | | | 2 pole |
| 400 | J [Ⓞ] | — | — | — | — | — | FD400J2 |
| 600 | J [Ⓞ] | — | — | — | — | — | FD600J2 |
| 800 | L | — | — | — | — | — | FD800L2 |
| 3 pole | | | | | | | 3 pole |
| 400 | J [Ⓞ] | 100 | 125 | 125 | 250 | 350 | FD400J3 |
| 600 | J [Ⓞ] | 150 | 150 | 200 | 400 | 500 | FD600J3 |
| 800 | L | 200 | 200 | 250 | 500 | 600 | FD800L3 |
| 4 pole | | | | | | | 4 pole |
| 400 | J [Ⓞ] | 100 | 125 | 125 | 250 | 350 | FD400J4 |
| 600 | J [Ⓞ] | 150 | 150 | 200 | 400 | 500 | FD600J4 |
| 800 | L | 200 | 200 | 250 | 500 | 600 | FD800L4 |



FD400J3



FD600J3
FD800L3



BDH112



BDH113

Pistol handles — □ .47 x .47" (□ 12 x 12mm)

| NEMA type | IEC type | Color | Length inches/mm | Marking | Defeatable | Padlockable | Weight (lbs) | Catalog number |
|--------------|----------|---------|------------------|--------------|------------|-------------|--------------|----------------|
| 1,3R,12 | IP65 | Black | 4.9/125 | O/I & Off/On | Yes | Yes | 0.39 | BDH112 |
| 1,3R,12 | IP65 | Red/Yel | 4.9/125 | O/I & Off/On | Yes | Yes | 0.39 | BDH113 |
| 1,3R,12 | IP65 | Black | 5.7/145 | O/I & Off/On | Yes | Yes | 0.39 | BDH114 |
| 1,3R,12 | IP65 | Red/Yel | 5.7/145 | O/I & Off/On | Yes | Yes | 0.39 | BDH115 |
| 1,3R,12 | IP65 | Black | 6.9/175 | O/I & Off/On | Yes | Yes | 0.41 | BDH116 |
| 1,3R,12 | IP65 | Red/Yel | 6.9/175 | O/I & Off/On | Yes | Yes | 0.41 | BDH117 |
| 1,3R,4,4X,12 | IP65 | Black | 5.7/145 | O/I & Off/On | Yes | Yes | 0.39 | CDHXB12 |
| 1,3R,4,4X,12 | IP65 | Red/Yel | 5.7/145 | O/I & Off/On | Yes | Yes | 0.39 | CDHXY12 |
| 1,3R,4,4X,12 | IP65 | Black | 6.9/175 | O/I & Off/On | Yes | Yes | 0.41 | CDHXB22 |
| 1,3R,4,4X,12 | IP65 | Red/Yel | 6.9/175 | O/I & Off/On | Yes | Yes | 0.41 | CDHXY22 |
| 1,3R,4,4X,12 | IP65 | Metal | 8.7/220 | Off/On | — | Yes | 1.50 | BDH8 |

Ⓞ J type fuse clips are standard. If 600V Type "T" fuse clips are desired, please order a "T" type fuse adapter kit.

Fusible

Non-Fused

Enclosed Fused

Enclosed Non-Fused

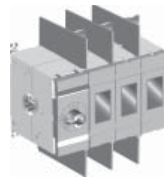
400A

Non-Fusible Disconnect Switches



For a complete assembly,
please select one of each:

- 1 switch
- 1 handle
- 1 shaft
- 1 terminal lug kit



CDNF400U03



BDS280



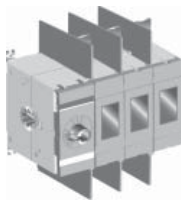
BDH114



CDTL400

Non-Fusible 3 pole and 4 pole 400A Switch 200 AMP, 600V

| UL general purpose amp rating | IEC AC21 Amp Rating | Maximum horsepower rating | | | | | Catalog number |
|--|---------------------------|---------------------------|------|------|------|------|-------------------|
| | | Three phase | | | | | |
| | | 200V | 208V | 240V | 480V | 600V | |
| 3-pole | | | | | | | |
| 400 | 630 | 100 | 100 | 125 | 250 | 350 | CDNF400U03 |
| 4-pole | | | | | | | |
| 400 | 630 | 100 | 100 | 125 | 250 | 350 | CDNF400U04 |



CDNF400U03



BDH112-117



BDS_



BDS_45



CDTL400

Pistol handles - $\square .47 \times .47''$ ($\square 12 \times 12\text{mm}$)

| UL/NEMA type | IEC type | Color | Length inches/mm | Marking | Defeatable | Padlockable | Weight (lbs) | Catalog number |
|--------------|----------|---------|---------------------|--------------|------------|-------------|-----------------|-------------------|
| 1,3R,12 | IP65 | Black | 4.9/125 | O/I & Off/On | Yes | Yes | 0.39 | BDH112 |
| 1,3R,12 | IP65 | Red/Yel | 4.9/125 | O/I & Off/On | Yes | Yes | 0.39 | BDH113 |
| 1,3R,12 | IP65 | Black | 5.7/145 | O/I & Off/On | Yes | Yes | 0.39 | BDH114 |
| 1,3R,12 | IP65 | Red/Yel | 5.7/145 | O/I & Off/On | Yes | Yes | 0.39 | BDH115 |
| 1,3R,12 | IP65 | Black | 6.9/175 | O/I & Off/On | Yes | Yes | 0.41 | BDH116 |
| 1,3R,12 | IP65 | Red/Yel | 6.9/175 | O/I & Off/On | Yes | Yes | 0.41 | BDH117 |
| 1,3R,4,4X,12 | IP66 | Black | 5.7/145 | O/I & Off/On | Yes | Yes | 0.39 | CDHXB12 |
| 1,3R,4,4X,12 | IP66 | Red/Yel | 5.7/145 | O/I & Off/On | Yes | Yes | 0.39 | CDHXY12 |
| 1,3R,4,4X,12 | IP66 | Black | 6.9/175 | O/I & Off/On | Yes | Yes | 0.41 | CDHXB22 |
| 1,3R,4,4X,12 | IP66 | Red/Yel | 6.9/175 | O/I & Off/On | Yes | Yes | 0.41 | CDHXY22 |
| 1,3R,4,4X,12 | IP65 | Metal | 8.7/220 | Off/On | --- | Yes | 1.50 | BDHB |

Shafts - $\square .47 \times .47''$ ($\square 12 \times 12\text{mm}$)

| Shaft length (inches/mm) | Mounting dept (inches) | Weight (lbs) | Catalog number |
|-----------------------------|---------------------------|-----------------|----------------|
| 11.0/280 | 10.2-14.5 | 0.77 | BDS280 |
| 12.8/325 | 12.0-16.3 | 0.90 | BDS325 |
| 15.6/395 | 14.8-19.1 | 1.10 | BDS395 |
| 18.3/465 | 17.5-21.9 | 1.32 | BDS465 |
| 21.1/535 | 20.3-24.6 | 1.54 | BDS535 |

Twisted shafts - rotates handle 45° $\square .47 \times .47''$ ($\square 12 \times 12\text{mm}$)

| Shaft length (inches/mm) | Mounting dept (inches) | Weight (lbs) | Catalog number |
|-----------------------------|---------------------------|-----------------|----------------|
| 11.0/280 | 10.2-14.5 | 0.77 | BDS28045 |
| 12.8/325 | 12.0-16.3 | 0.90 | BDS32545 |
| 18.3/465 | 17.5-21.5 | 1.32 | BDS46545 |

Direct mount handle - TEST-OFF-ON

| Description | Color | (lbs) | Catalog number |
|---|---------|-------|----------------|
| Up to 3 padlocks in OFF-position. Includes shaft and mechanism | Black | 0.44 | CDHTB40 |
| | Red/Yel | 0.44 | CDHTY40 |

Fusible

Non-Fused

Enclosed Fused

Enclosed Non-Fused

For a complete assembly, please select one of each:

- 1 switch
- 1 handle
- 1 shaft
- 1 terminal lug kit



BDNF600A



BDS280



BDH116



BDTL26

Fusible

Non-Fused

Enclosed Fused

Enclosed Non-Fused



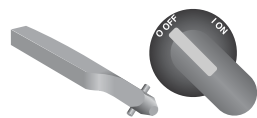
BDNF800A



BDH112-117



BDS280



BDS_45

600 – 800 Amp switches, 600V

| UL general purpose amp rating | IEC AC21 amp rating | Maximum horsepower rating | | | | | Catalog number |
|-------------------------------|---------------------|---------------------------|------|------|------|------|------------------------|
| | | 200V | 208V | 240V | 480V | 600V | |
| 2 pole | | | | | | | |
| 600 | 800 | — | — | — | — | — | BDNF600A2 BDNF800A2 |
| 800 | 1250 | — | — | — | — | — | |
| 3 pole | | | | | | | |
| 600 | 800 | 150 | 150 | 200 | 400 | 500 | BDNF600A BDNF800A |
| 800 | 1250 | 200 | 200 | 250 | 500 | 600 | |
| 4 pole | | | | | | | |
| 600 | 800 | 150 | 150 | 200 | 400 | 500 | BDNF600A4 BDNF800A4 |
| — | 1250 | 200 | 200 | 250 | 500 | 600 | |

Pistol handles — for use with shafts $\square .47 \times .47"$ ($\square 12 \times 12$ mm)

| NEMA type | IEC type | Color | Length in/mm | Marking | Defeatable | Padlockable | Weight (lbs) | Catalog number |
|--------------|----------|-------|--------------|--------------|------------|-------------|--------------|----------------|
| 1,3R,12 | IP65 | Blk | 4.9/125 | O/I & Off/On | Yes | Yes | 0.39 | BDH112 |
| 1,3R,12 | IP65 | R/Y | 4.9/125 | O/I & Off/On | Yes | Yes | 0.39 | BDH113 |
| 1,3R,12 | IP65 | Blk | 5.7/145 | O/I & Off/On | Yes | Yes | 0.39 | BDH114 |
| 1,3R,12 | IP65 | R/Y | 5.7/145 | O/I & Off/On | Yes | Yes | 0.39 | BDH115 |
| 1,3R,12 | IP65 | Blk | 6.9/175 | O/I & Off/On | Yes | Yes | 0.41 | BDH116 |
| 1,3R,12 | IP65 | R/Y | 6.9/175 | O/I & Off/On | Yes | Yes | 0.41 | BDH117 |
| 1,3R,4,4X,12 | IP66 | Blk | 5.7/145 | O/I & Off/On | Yes | Yes | 0.39 | CDHXB12 |
| 1,3R,4,4X,12 | IP66 | R/Y | 5.7/145 | O/I & Off/On | Yes | Yes | 0.39 | CDHXY12 |
| 1,3R,4,4X,12 | IP66 | Blk | 6.9/175 | O/I & Off/On | Yes | Yes | 0.41 | CDHXB22 |
| 1,3R,4,4X,12 | IP66 | R/Y | 6.9/175 | O/I & Off/On | Yes | Yes | 0.41 | CDHXY22 |
| 1,3R,4,4X,12 | IP65 | Metal | 8.7/220 | Off/On | — | Yes | 1.50 | BDH8 |

Shafts — for use with pistol handles $\square .47 \times .47"$ ($\square 12 \times 12$ mm)

| Shaft length inches/mm | Mounting depth ^① in inches | Weight (lbs) | Catalog number |
|------------------------|---------------------------------------|--------------|----------------|
| 11.0/280 | 10.2 – 14.5 | 0.77 | BDS280 |
| 12.8/325 | 12.0 – 16.3 | 0.90 | BDS325 |
| 15.6/395 | 14.8 – 19.1 | 1.10 | BDS395 |
| 18.3/465 | 17.5 – 21.9 | 1.32 | BDS465 |
| 21.1/535 | 20.3 – 24.6 | 1.54 | BDS535 |

Twisted shafts —rotates handle 45° $\square .47 \times .47"$ ($\square 12 \times 12$ mm)

| Shaft length inches/mm | Mounting depth ^① in inches | Weight (lbs) | Catalog number |
|------------------------|---------------------------------------|--------------|----------------|
| 11.0/280 | 10.2 – 14.5 | 0.77 | BDS28045 |
| 12.8/325 | 12.0 – 16.3 | 0.90 | BDS32545 |
| 18.3/465 | 17.5 – 21.9 | 1.32 | BDS46545 |

① Mounting depth is the distance from the outside of the door to the disconnect switch mounting plate. Shaft can be cut to desired length.

For a complete assembly please select one of each:

- 1 switch
- 1 handle
- 1 shaft
- 1 terminal lug kit



BDNF1200



BDS280



BDH117



BDTL28

1200 – 3150 Amp switches, 600V

| UL general purpose amp rating | IEC AC21 amp rating | Maximum horsepower rating | Catalog number |
|-------------------------------|---------------------|--|--|
| 2 pole | | The US National Electric Code does not specify HP ratings for switches this large. Please select a switch based on 115% of application FLA. For example: a motor with an FLA of 800A would require a 1200A switch: 800A x 115% = 920A, the closest higher rated switch is 1200A. | BDNF12002 BDNF16002 BDNF20002 BDNF31502 |
| 1200 | 1600 | | |
| 1600 | 2500 | | |
| 2000 | 2500 | | |
| — | 3150 | | BDNF1200 BDNF1600 BDNF2000 BDNF3150 |
| 3 pole | | | |
| 1200 | 1600 | | |
| 1600 | 2500 | | |
| 2000 | 2500 | | |
| — | 3150 | | BDNF12004 BDNF16004 BDNF20004 BDNF31504 |
| 4 pole | | | |
| — | 1600 | | |
| — | 2500 | | |
| — | 2500 | | |
| — | 3150 | | |

Pistol handles — for use with shaft .47 x .47" (12 x 12mm)

| NEMA type | IEC type | Color | Length mm | Marking | Defeatable | Padlockable | Weight (lbs) | Catalog number |
|------------------------------|----------|------------|-----------|--------------|------------|-------------|--------------|----------------|
| For use with BDNF1200 | | | | | | | | |
| 1,3R,12 | IP65 | Black | 5.7/145 | O/I & Off/On | Yes | Yes | 0.39 | BDH114 |
| 1,3R,12 | IP65 | Red/Yellow | 5.7/145 | O/I & Off/On | Yes | Yes | 0.39 | BDH115 |
| 1,3R,12 | IP65 | Black | 6.9/175 | O/I & Off/On | Yes | Yes | 0.41 | BDH116 |
| 1,3R,12 | IP65 | Red/Yellow | 6.9/175 | O/I & Off/On | Yes | Yes | 0.41 | BDH117 |
| 1,3R,4,4X,12 | IP66 | Black | 5.7/145 | O/I & Off/On | Yes | Yes | 0.39 | CDHXB12 |
| 1,3R,4,4X,12 | IP66 | Red/Yellow | 5.7/145 | O/I & Off/On | Yes | Yes | 0.39 | CDHXY12 |
| 1,3R,4,4X,12 | IP66 | Black | 6.9/175 | O/I & Off/On | Yes | Yes | 0.41 | CDHXB22 |
| 1,3R,4,4X,12 | IP65 | Red/Yellow | 6.9/175 | O/I & Off/On | Yes | Yes | 0.41 | CDHXY22 |

For use with BDNF1600 – 3150

| | | | | | | | | |
|--------------|------|-------|---------|--------|---|-----|------|------|
| 1,3R,4,4X,12 | IP65 | Metal | 8.7/220 | Off/On | — | Yes | 1.50 | BDH8 |
|--------------|------|-------|---------|--------|---|-----|------|------|

Shafts — for use with pistol handles .47 x .47" (12 x 12 mm)

| Shaft length inches/mm | Mounting depth [Ⓛ] in inches | Weight (lbs) | Catalog number |
|-------------------------------------|---------------------------------------|--------------|----------------|
| For use with BDNF1200 | | | |
| 11.0/280 | 11.6 – 15.3 | 0.77 | BDS280 |
| 12.8/325 | 13.7 – 17.1 | 0.90 | BDS325 |
| 15.6/397 | 16.2 – 19.9 | 1.10 | BDS395 |
| 18.3/465 | 18.9 – 22.6 | 1.32 | BDS465 |
| 21.1/536 | 21.7 – 25.4 | 1.54 | BDS535 |
| For use with BDNF1600 – 3150 | | | |
| 12.8/325 | 13.7 – 17.1 | 0.90 | BDS325 |
| 15.6/397 | 16.2 – 19.9 | 1.10 | BDS395 |
| 18.3/465 | 18.9 – 22.6 | 1.32 | BDS465 |
| 21.1/536 | 21.7 – 25.4 | 1.54 | BDS535 |

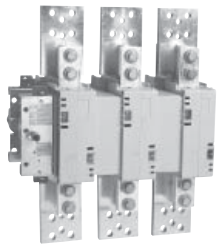
[Ⓛ] Mounting depth is the distance from the outside of the door to the disconnect switch mounting plate. Shaft can be cut to desired length.

Fusible

Non-Fused

Enclosed Fused

Enclosed Non-Fused



BDNF1600
BDNF2000
BDNF3150



BDH114



BDH115



BDH8



BDS325

Fusible

Non-Fused

Enclosed Fused

Enclosed Non-Fused

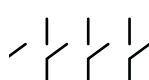
NEMA / UL Enclosure type

| UL general purpose amp rating | Type of Switch | NEMA / UL Enclosure type | | | | | |
|-------------------------------|---------------------|--------------------------|----------------|----------------|----------------|----------------|----------------|
| | | 1 | 3R | 4 | 4X Stainless | 4X Plastic | 12 |
| | | Catalog number | Catalog number | Catalog number | Catalog number | Catalog number | Catalog number |
| 30 (J fuses) | 4 Pole ^① | EFJ301-4PB6 | EFJ303-4PB6 | EFJ304-4PB6 | EFJ30X-4PB6 | EFJ30P-4PB6 | EFJ302-4PB6 |
| | 6 Pole | EFJ301-6PB6 | EFJ303-6PB6 | EFJ304-6PB6 | EFJ30X-6PB | EFJ30P-6PB6 | EFJ302-6PB6 |
| 30 (CC fuses) | 4 Pole ^① | EFC301-4PB6 | EFC303-4PB6 | EFC304-4PB6 | EFC30X-4PB6 | EFC30P-4PB6 | EFC302-4PB6 |
| | 6 Pole | EFC301-6PB6 | EFC303-6PB6 | EFC304-6PB6 | EFC30X-6PB6 | EFC30P-6PB6 | EFC302-6PB6 |
| 60 | 4 Pole ^① | EFJ601-4PB6 | EFJ603-4PB6 | EFJ604-4PB6 | EFJ60X-4PB6 | EFJ60P-4PB6 | EFJ602-4PB6 |
| | 6 Pole | EFJ601-6PB4 | EFJ603-6PB4 | EFJ604-6PB4 | EFJ60X-6PB4 | EFJ60P-6PB4 | EFJ602-6PB4 |
| 100 | 2 Pole ^① | EFJ1001-2PB8 | EFJ1003-2PB8 | EFJ1004-2PB8 | EFJ100X-2PB8 | EFJ100P-2PB8 | EFJ1002-2PB8 |
| | 4 Pole ^① | EFJ1001-4PB8 | EFJ1003-4PB8 | EFJ1004-4PB8 | EFJ100X-4PB8 | EFJ100P-4PB8 | EFJ1002-4PB8 |
| | 6 Pole | EFJ1001-6PB4 | EFJ1003-6PB4 | EFJ1004-6PB4 | EFJ100X-6PB4 | EFJ100P-6PB4 | EFJ1002-6PB4 |
| 200 | 4 Pole ^① | EFJ2001-4PB8C | EFJ2003-4PB8C | EFJ2004-4PB8C | EFJ200X-4PB8C | EFJ200P-4PB8C | EFJ2002-4PB8C |
| | 6 Pole | — | — | — | — | — | — |
| 400 | 2 Pole ^① | EFJ4001-2PB4 | EFJ4003-2PB4 | EFJ4004-2PB4 | EFJ400X-2PB4 | EFJ400P-2PB4 | EFJ4002-2PB4 |
| | 4 Pole ^① | EFJ4001-4PB4 | EFJ4003-4PB4 | EFJ4004-4PB4 | EFJ400X-4PB4 | EFJ400P-4PB4 | EFJ4002-4PB4 |
| | 6 Pole | EFJ4001-6P8 | EFJ4003-6P8 | EFJ4004-6P8 | EFJ400X-6P8 | EFJ400P-6P8 | EFJ4002-6P8 |
| 600 | 2 Pole ^① | EFJ6001-2PB4 | EFJ6003-2PB4 | EFJ6004-2PB4 | EFJ600X-2PB4 | EFJ600P-2PB4 | EFJ6002-2PB4 |
| | 4 Pole ^① | EFJ6001-4PB4 | EFJ6003-4PB4 | EFJ6004-4PB4 | EFJ600X-4PB4 | EFJ600P-4PB4 | EFJ6002-4PB4 |
| | 6 Pole | EFJ6001-6P8 | EFJ6003-6P8 | EFJ6004-6P8 | EFJ600X-6P8 | EFJ600P-6P8 | EFJ6002-6P8 |
| 800 | 2 Pole ^① | EFL8001-2PB4 | EFL8003-2PB4 | EFL8004-2PB4 | EFL800X-2PB4 | EFL800P-2PB4 | EFL8002-2PB4 |
| | 4 Pole ^① | EFL8001-4PB4 | EFL8003-4PB4 | EFL8004-4PB4 | EFL800X-4PB4 | EFL800P-4PB4 | EFL8002-4PB4 |
| | 6 Pole | EFL8001-6P8 | EFL8003-6P8 | EFL8004-6P8 | EFL800X-6P8 | EFL800P-6P8 | EFL8002-6P8 |

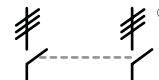
2 Pole



4 Pole



6 Pole



Handle ratings

| Amperage range | Style type | NEMA | Color | Marking | Defeatable | Padlockable | Catalog number suffix | Catalog number |
|------------------------------|------------|--------------|---------|--------------|------------|-------------|-----------------------|----------------|
| 30 | Selector | 1,3R,12 | Black | 0/I & OFF/ON | Yes | Yes | BJ | CDH5S |
| | Selector | 1,3R,12 | Red/Yel | 0/I & OFF/ON | Yes | Yes | YJ | CDH6S |
| | Pistol | 1,3R,12 | Black | 0/I & OFF/ON | Yes | Yes | B6 | BDH106 |
| | Pistol | 1,3R,12 | Red/Yel | 0/I & OFF/ON | Yes | Yes | Y6 | BDH107 |
| | Pistol | 1,3R,4,4X,12 | Black | 0/I & OFF/ON | Yes | Yes | B6 | CDHXB65 |
| | Pistol | 1,3R,4,4X,12 | Red/Yel | 0/I & OFF/ON | Yes | Yes | Y6 | CDHXY65 |
| 60 – 100 and 200A 3 & 4 Pole | Pistol | 1,3R,12 | Black | 0/I & OFF/ON | Yes | Yes | B6 | BDH58 |
| | Pistol | 1,3R,12 | Red/Yel | 0/I & OFF/ON | Yes | Yes | Y6 | BDH59 |
| | Pistol | 1,3R,12 | Black | 0/I & OFF/ON | Yes | Yes | B8 | BDH60 |
| | Pistol | 1,3R,12 | Red/Yel | 0/I & OFF/ON | Yes | Yes | Y8 | BDH61 |
| | Pistol | 1,3R,4,4X,12 | Black | 0/I & OFF/ON | Yes | Yes | B8 | CDHXB86 |
| | Pistol | 1,3R,4,4X,12 | Red/Yel | 0/I & OFF/ON | Yes | Yes | Y8 | CDHXY86 |
| 400A – 800A | Pistol | 1,3R,12 | Black | 0/I & OFF/ON | Yes | Yes | B4 | BDH114 |
| | Pistol | 1,3R,12 | Red/Yel | 0/I & OFF/ON | Yes | Yes | Y4 | BDH115 |
| | Pistol | 1,3R,12 | Black | 0/I & OFF/ON | Yes | Yes | B7 | BDH116 |
| | Pistol | 1,3R,12 | Red/Yel | 0/I & OFF/ON | Yes | Yes | Y7 | BDH117 |
| | Pistol | 1,3R 4,4X,12 | Black | 0/I & OFF/ON | Yes | Yes | B4 | CDHXB12 |
| | Pistol | 1,3R,4,4X,12 | Red/Yel | 0/I & OFF/ON | Yes | Yes | Y4 | CDHXY12 |
| | Pistol | 1,3R,4,4X,12 | Black | 0/I & OFF/ON | Yes | Yes | B7 | CDHXB22 |
| | Pistol | 1,3R,4,4X,12 | Red/Yel | 0/I & OFF/ON | Yes | Yes | Y7 | CDHXY22 |
| | Pistol | 1,3R,4,4X,12 | Metal | 0/I & OFF/ON | No | Yes | 8 | BDH8 |

① Fusible switches are UL Listed to the UL98 standard.

② 600V T type fuse clips may be substituted at no charge. Please change the second character of the catalog number from "J" to "T."

Switch ratings, 16 – 3150 Amps, 600V

| UL General purpose amp rating | Maximum horsepower rating | | | | | | | Wire size for terminal lugs | For wire type | Approval | |
|--|---------------------------|------|------|-------------|------|------|------|-----------------------------|--------------------|------------------------|------------------------|
| | Single phase | | | Three phase | | | | | | | |
| | 120V | 200V | 240V | 200V – 208V | 240V | 480V | 600V | | | | |
| UL 508 ↑ 16 25 40 60 80 ↓ | 16 | 1/2 | 1.5 | 1.5 | 3 | 5 | 10 | 10 | #18 – 8 | Cu | cULus, UL ^① |
| | 25 | 3/4 | 2 | 2 | 7.5 | 7.5 | 15 | 20 | #18 – 8 | Cu | cULus, UL ^① |
| | 40 | 1 | 3 | 3 | 10 | 10 | 20 | 25 | #18 – 8 | Cu | cULus, UL ^① |
| | 60 | 2 | 5 | 5 | 15 | 15 | 30 | 30 | #14 – 1 | Cu | cULus, UL ^① |
| | 80 | 2 | 5 | 5 | 20 | 20 | 40 | 50 | #14 – 1 | Cu | cULus, UL ^① |
| UL 98 ↑ 30 60 100 125 200 400 600 800 1200 1600 2000 3150 ^③ ↓ | 30 | 2 | 5 | 5 | 10 | 10 | 20 | 30 | #14 – 4 | Cu | cULus, UL ^② |
| | 60 | 3 | 7.5 | 7.5 | 20 | 20 | 40 | 40 | #14 – 4 | Cu | cULus, UL ^② |
| | 100 | 5 | 15 | 15 | 25 | 25 | 50 | 40 | #8 – 1/0 | Cu | cULus, UL ^② |
| | 125 | 7.5 | 20 | 20 | 30 | 30 | 60 | 75 | #8 – 1/0 | Cu | cULus, UL ^② |
| | 200 | — | — | — | 60 | 75 | 150 | 200 | #6 – 300 kcmil | Cu | cULus, UL ^② |
| | 400 | — | — | — | 100 | 125 | 250 | 350 | #2 – 600 kcmil | Cu | cULus, UL ^② |
| | 600 | — | — | — | 150 | 200 | 400 | 500 | (2) #2 – 600 kcmil | Cu | cULus, UL ^② |
| | 800 | — | — | — | 200 | 250 | 500 | 600 | (2) #2 – 600 kcmil | Cu/Al | cULus, UL ^② |
| | 1200 | — | — | — | — | — | — | — | (4) #2 – 600 kcmil | Cu/Al | cULus, UL ^② |
| | 1600 | — | — | — | — | — | — | — | (4) #2 – 600 kcmil | Cu/Al | cULus, UL ^② |
| 2000 | — | — | — | — | — | — | — | (8) #2 – 600 kcmil | Cu/Al | cULus, UL ^② | |
| 3150 ^③ | — | — | — | — | — | — | — | (8) #2 – 600 kcmil | Cu/Al | IEC | |

Handle ratings, 16 – 3150 Amps, 600V

| Amperage range | Style type | NEMA | Color | Marking | Defeatable | Padlockable | Catalog number suffix | Catalog number |
|----------------|------------|--------------|---------|--------------|------------|-------------|-----------------------|----------------|
| 16 – 100 | Selector | 1,3R,12 | Black | 0/I & OFF/ON | Yes | Yes | BJ | CDH5S |
| | Selector | 1,3R,12 | Red/Yel | 0/I & OFF/ON | Yes | Yes | YJ | CDH6S |
| | Pistol | 1,3R,12 | Black | 0/I & OFF/ON | Yes | Yes | B6 | BDH106 |
| | Pistol | 1,3R,12 | Red/Yel | 0/I & OFF/ON | Yes | Yes | Y6 | BDH107 |
| | Pistol | 1,3R,4,4X,12 | Black | 0/I & OFF/ON | Yes | Yes | B6 | CDHXB65 |
| | Pistol | 1,3R,4,4X,12 | Red/Yel | 0/I & OFF/ON | Yes | Yes | Y6 | CDHXY65 |
| 125 | Pistol | 1,3R,12 | Black | 0/I & OFF/ON | Yes | Yes | B6 | BDH120 |
| | Pistol | 1,3R,12 | Red/Yel | 0/I & OFF/ON | Yes | Yes | Y6 | BDH121 |
| | Pistol | 1,3R,4,4X,12 | Black | 0/I & OFF/ON | Yes | Yes | B8 | CDHXB86 |
| | Pistol | 1,3R,4,4X,12 | Red/Yel | 0/I & OFF/ON | Yes | Yes | Y8 | CDHXY86 |
| 200 | Pistol | 1,3R,12 | Black | 0/I & OFF/ON | Yes | Yes | B8 | BDH60 |
| | Pistol | 1,3R,12 | Red/Yel | 0/I & OFF/ON | Yes | Yes | Y8 | BDH61 |
| | Pistol | 1,3R,4,4X,12 | Black | 0/I & OFF/ON | Yes | Yes | B8 | CDHXB86 |
| | Pistol | 1,3R,4,4X,12 | Red/Yel | 0/I & OFF/ON | Yes | Yes | Y8 | CDHXY86 |
| 400 – 3150 | Pistol | 1,3R,12 | Black | 0/I & OFF/ON | Yes | Yes | B4 | BDH114 |
| | Pistol | 1,3R,12 | Red/Yel | 0/I & OFF/ON | Yes | Yes | Y4 | BDH115 |
| | Pistol | 1,3R,12 | Black | 0/I & OFF/ON | Yes | Yes | B7 | BDH116 |
| | Pistol | 1,3R,12 | Red/Yel | 0/I & OFF/ON | Yes | Yes | Y7 | BDH117 |
| | Pistol | 1,3R,4,4X,12 | Black | 0/I & OFF/ON | Yes | Yes | B4 | CDHXB12 |
| | Pistol | 1,3R,4,4X,12 | Red/Yel | 0/I & OFF/ON | Yes | Yes | Y4 | CDHXY12 |
| | Pistol | 1,3R,4,4X,12 | Black | 0/I & OFF/ON | Yes | Yes | B7 | CDHXB22 |
| | Pistol | 1,3R,4,4X,12 | Red/Yel | 0/I & OFF/ON | Yes | Yes | Y7 | CDHXY22 |
| | Pistol | 1,3R,4,4X,12 | Metal | 0/I & OFF/ON | No | Yes | 8 | BDH8 |

① UL Listed (UL508).
 ② UL Listed (UL98).
 ③ IEC rated only.