



U214MTBL



U214MTBPL

**APPLICATION**

- Single meter position
- Designed to receive watt-hour meters that meet ANSI C12.10
- Overhead/underground feed
- Surface mount

**CONSTRUCTION**

- Type 3R construction
- Combination meter/main-load center-safety socket with factory installed test/bypass facilities.<sup>1</sup> Main disconnecting device available as circuit breaker or fusible pullout (“T” fuses are included)
- Separate sealable utility compartment
- Padlock provision on load side hinged door
- Snap type sealing ring included
- 5th jaw provision at nine o’clock – U/214MTBL only
- Ring style

**STANDARDS**

- UL 67 listed, complies with ANSI C12.7

**FINISH**

- ANSI 61 gray acrylic electrocoat finish

**ACCESSORIES**

- Ground bar kit — catalog #50011A
- Fifth jaw kit — catalog #50371
- AW hubs
- Screw type sealing ring — catalog #25016D
- Steel or clear lexan covers for socket opening
- Breaker filler plate #25319

**Overhead/Underground-Surface Mount**

CATALOG NUMBER	MAIN DISCONNECT	BRANCH CIRCUITS	AIC RATING	AMPACITY MAX.	CONT.	VOLTAGE	SERVICE TYPE	NUMBER OF JAWS	HUB PROV.	CONDUCTOR LUG RANGE			DIMENSIONS (INCHES)			
										PHASE LINE	CONDUCTOR LOAD	NEUTRAL CONDUCTOR	FIGURE NUMBER	HEIGHT (H)	WIDTH (W)	DEPTH (D)
U214MTBL	(1) 100A 2P CB	12/24	10K*	100	100	120/240	1Ø 3W	4	AW	14 AWG - 2/0 AWG	MAIN CIRCUIT BREAKER	14 AWG - 1/0 AWG	Fig. 1	24	20	4 5/8
U215MTBL	(1) 100A 3P CB	18/36	10K*	100	100	240**	3Ø 3W	5	AW	14 AWG - 2/0 AWG	MAIN CIRCUIT BREAKER	14 AWG - 1/0 AWG	Fig. 2	24	25	4 5/8
U217MTBL	(1) 100A 3P CB	18/36	10K*	100	100	208/120 & 240/120	3Ø 4W	7	AW	14 AWG - 2/0 AWG	MAIN CIRCUIT BREAKER	14 AWG - 1/0 AWG	Fig. 2	24	25	4 5/8
U214MTBPL	(1) 100A 2P pullout	12/24	100K	100	100	120/240	1Ø 3W	4	AW	14 AWG - 2/0 AWG	MAIN PULLOUT	14 AWG - 1/0 AWG	Fig. 2	24	25	4 5/8
U215MTBPL	(1) 100A 3P pullout	18/36	100K	100	100	240**	3Ø 3W	5	AW	14 AWG - 2/0 AWG	MAIN PULLOUT	14 AWG - 1/0 AWG	Fig. 2	28	25	4 5/8
U217MTBPL	(1) 100A 3P pullout	18/36	100K	100	100	208/120 & 240/120	3Ø 4W	7	AW	14 AWG - 2/0 AWG	MAIN PULLOUT	14 AWG - 1/0 AWG	Fig. 2	28	25	4 5/8

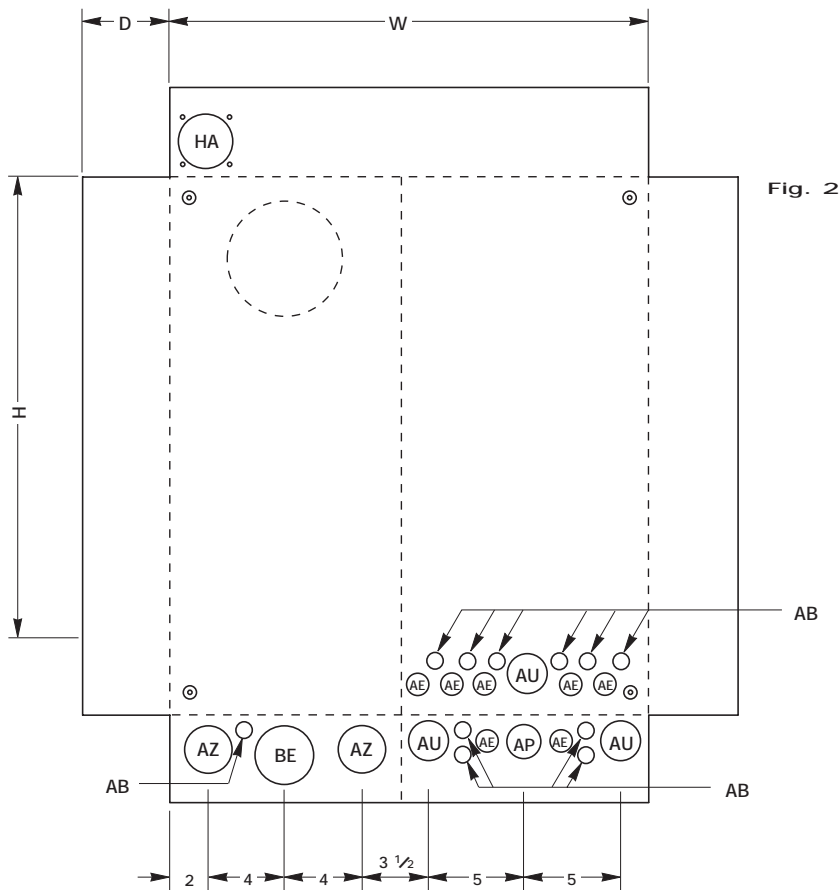
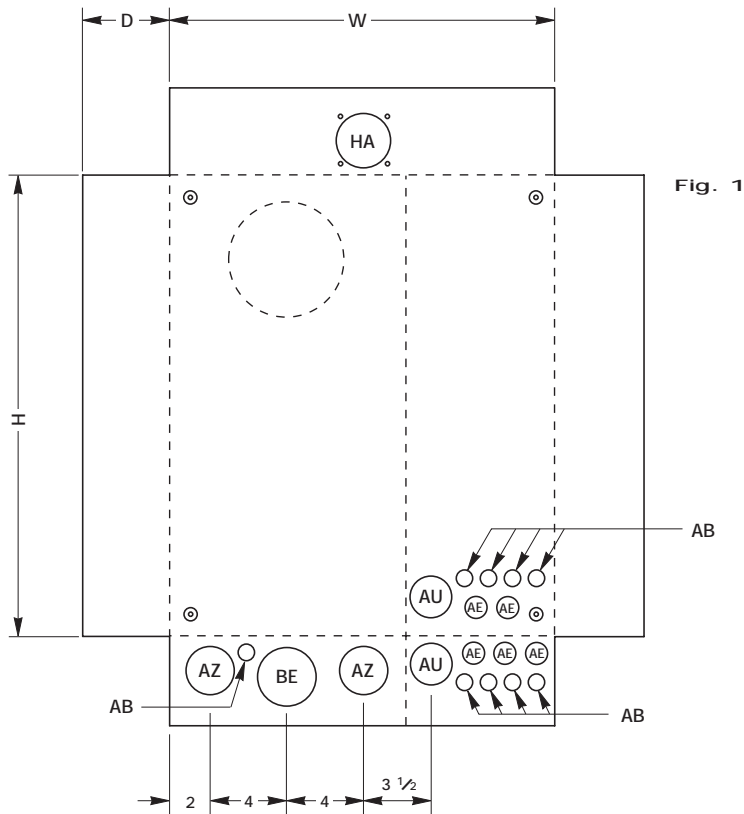
<sup>1</sup> = 60-in. lbs torque recommended for circuit-closing nut

\* Available in 22K and 65K on request

\*\* For 208/120V, 1Ø 3W systems, order 4-jaw unit and a 5th jaw kit

Note: For branch circuits, order type “OP” breaker 15amp-100amp

For Safety Socket Bypass instructions see page 74.



**Knockouts — Conduit Sizes**

- AB = 1/2"
- AE = 3/4" - 1/2"
- AP = 1 1/4" - 1" - 3/4" - 1/2"
- AU = 1 1/2" - 1 1/4" - 1" - 3/4"
- AZ = 2" - 1 1/2" - 1 1/4" - 1"
- BE = 2 1/2" - 2" - 1 1/2" - 1 1/4"
- HA = AW HUB